



 **IVORY HOMES**
COLLECTION



January 2025



QUALITY, DESIGN, & VALUE

The Ivory Collection was created by Ivory Homes, Utah's Number One Homebuilder®, to bring a new combination of quality, design, and value to Utah. In a difficult home building market of rising costs, the Ivory Collection brings an innovative and streamlined process option to home buyers. Get more style, design, quality, and value when you build an Ivory Collection home.

	PLAN NAME	TOTAL FINISHED SQUARE FOOTAGE	TOTAL UNFINISHED SQUARE FOOTAGE	TOTAL SQUARE FOOTAGE	BEDROOMS (FINISHED)	BATHROOMS (FINISHED)	WIDTH	DEPTH
RAMBLERS	1350 Plan	1,405	1,374	2,779	3	2	42' 0"	45' 5"
	1425 Plan	1,453	1,404	2,857	3	2	46' 6"	47' 5"
	1550 Plan	1,574	1,665	3,239	3	2	48' 0"	45' 5"
	1700 Plan	1,685	1,738	3,423	3	2	48' 0"	47' 5"
	1775 Plan	1,768	1,749	3,517	2	2.5	45' 0"	53' 9"
	1800 Plan	1,837	1,537	3,374	1	1.5	49' 0"	52' 0"
	1825 Plan	1,862	1,851	3,713	3	2.5	50' 0"	48' 5"
	2000 Plan	2,012	1,982	3,994	4	2.5	52' 0"	50' 5"
TWO-STORY	2050 Plan	2,175	1,113	3,288	3	2.5	40' 0"	42' 5"
	2200 Plan	2,283	1,701	3,984	4	2.5	46' 6"	50' 5"
	2400 Plan	2,443	1,526	3,969	4	2.5	50' 0"	42' 5"
	2500 Plan	2,613	1,358	3,971	4	2.5	52' 0"	46' 6"
	3000 Plan	3,133	1,358	4,491	3	2.5	52' 0"	46' 6"

1350 PLAN

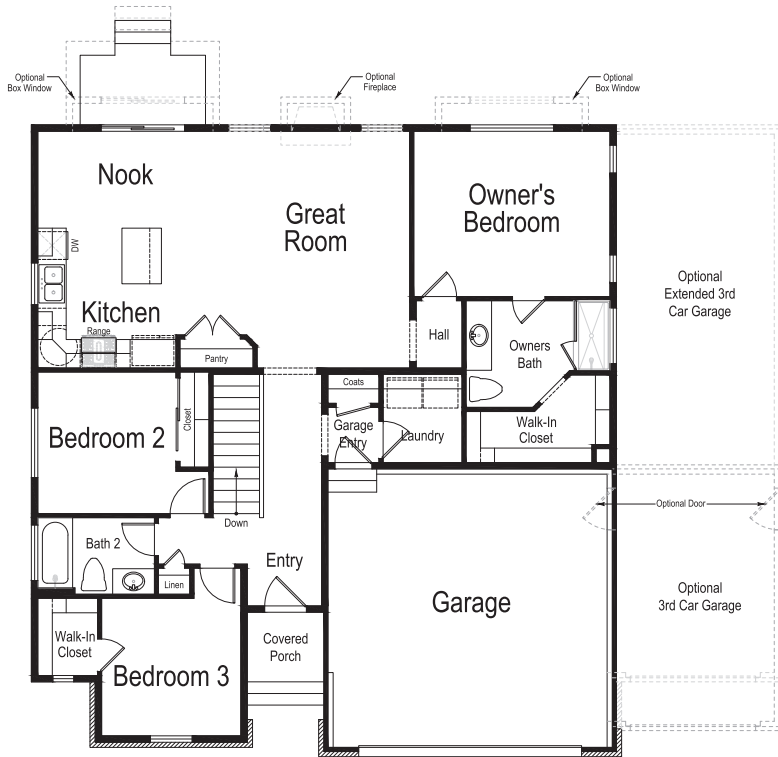
1,405 Total Finished Sq. Ft. | 2,779 Total Sq. Ft. | 3 Bedrooms | 2 Bathrooms



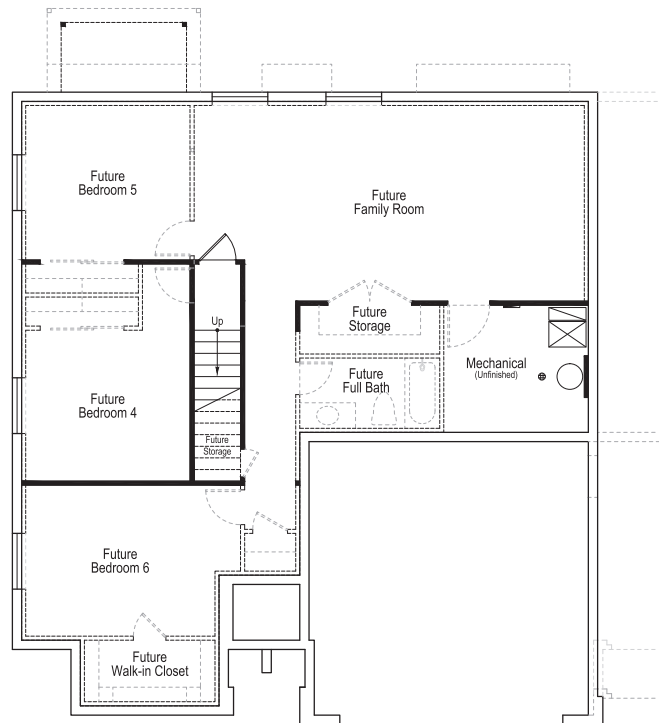
CRAFTSMAN



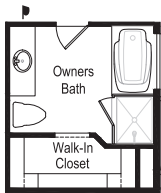
GARDEN



MAIN LEVEL



LOWER LEVEL



Grand Bath Option

1550 PLAN

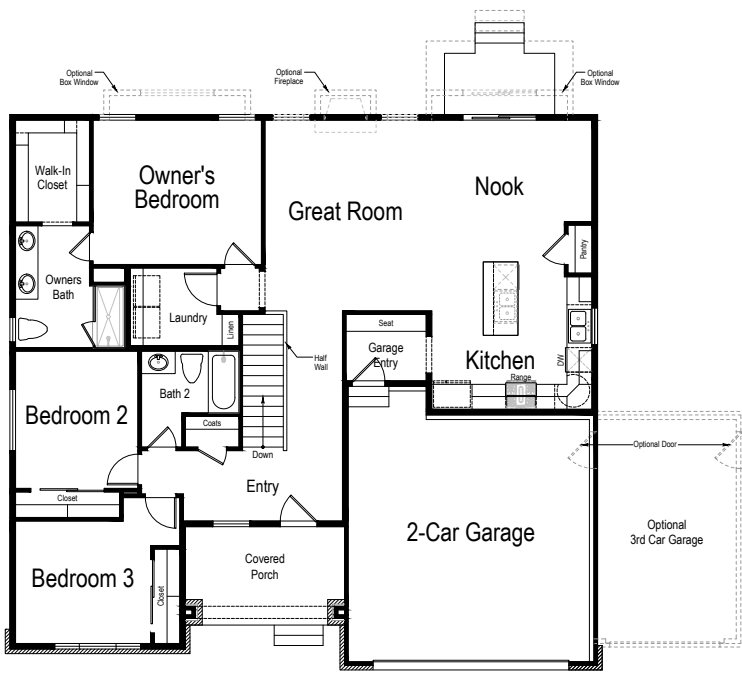
1,574 Total Finished Sq. Ft. | 3,239 Total Sq. Ft. | 3 Bedrooms | 2 Bathrooms



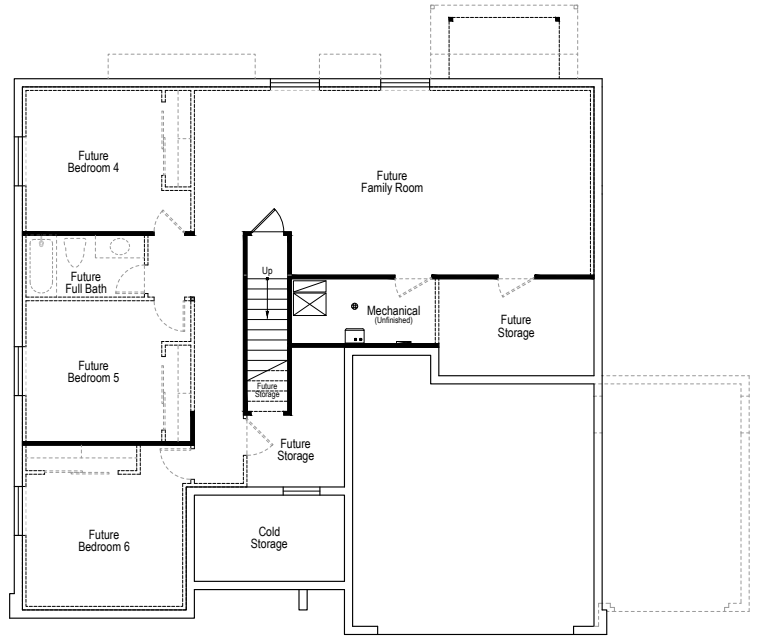
CRAFTSMAN



FARMHOUSE

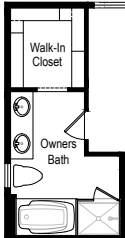


MAIN LEVEL



BASEMENT LEVEL

Optional Grand Bath



1700 PLAN

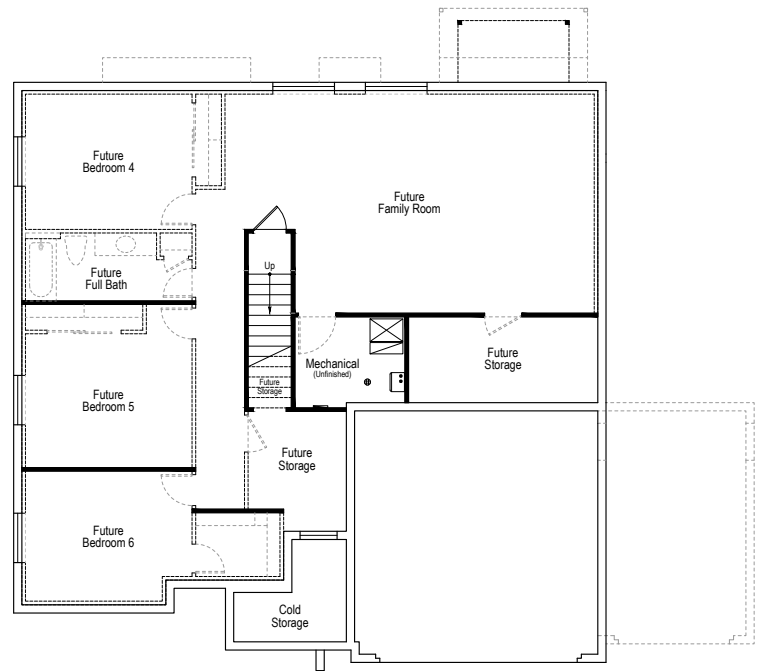
1,685 Total Finished Sq. Ft. | 3,423 Total Sq. Ft. | 3 Bedrooms | 2 Bathrooms



FARMHOUSE



GARDEN

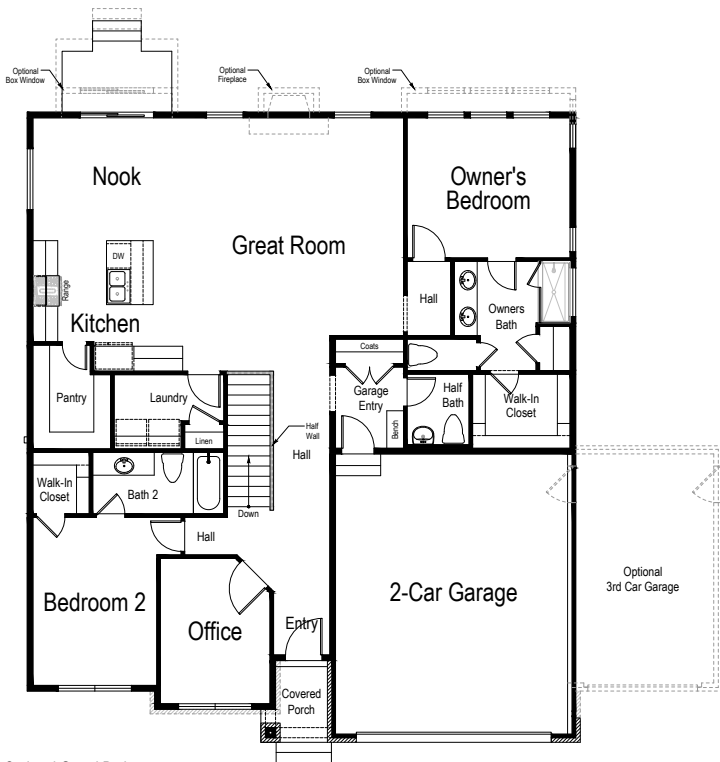


1775 PLAN

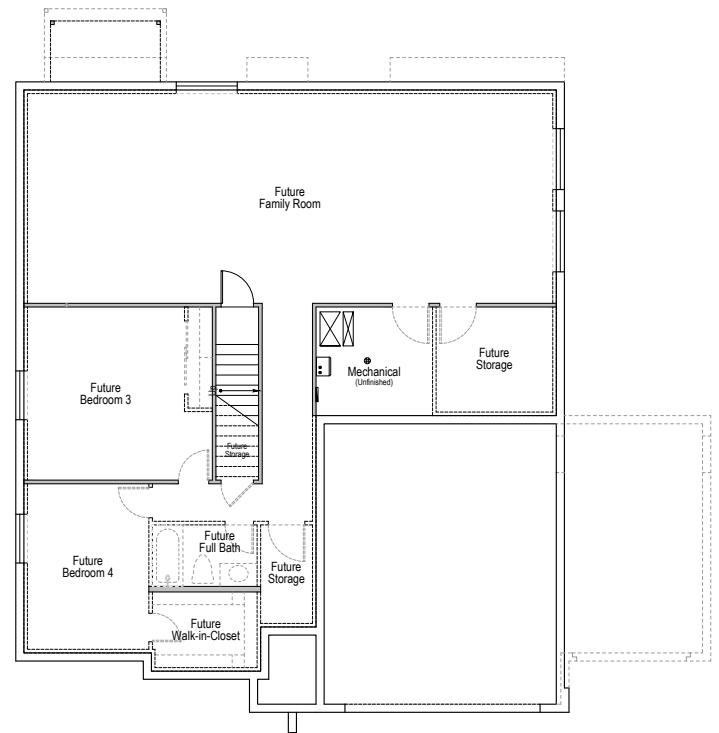
1,768 Total Finished Sq. Ft. | 3,517 Total Sq. Ft. | 2 Bedrooms | 2.5 Bathrooms



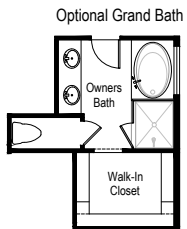
GARDEN



MAIN LEVEL



BASEMENT LEVEL



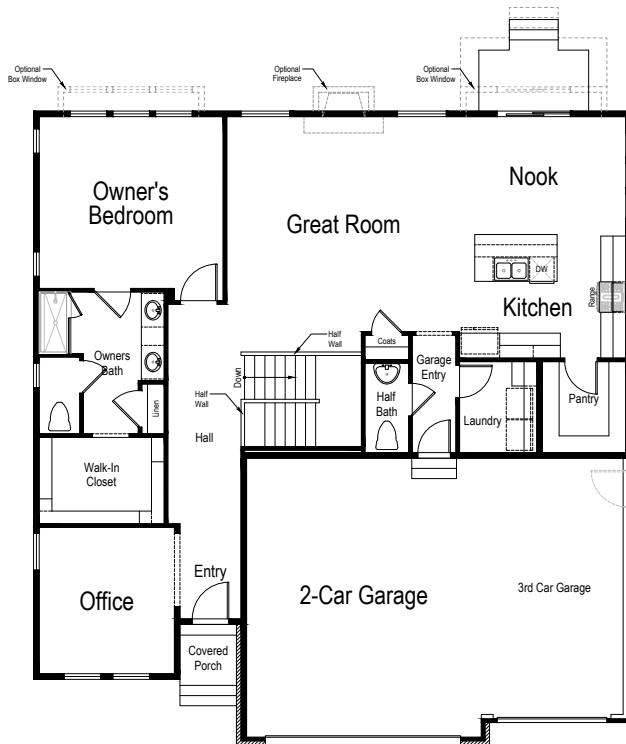
Optional Grand Bath

1800 PLAN

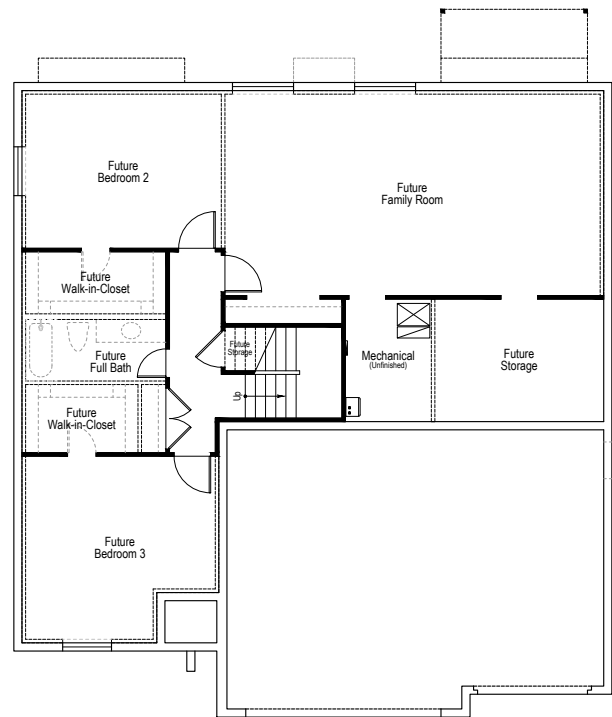
1,837 Total Finished Sq. Ft. | 3,374 Total Sq. Ft. | 1 Bedrooms | 1.5 Bathrooms



GARDEN

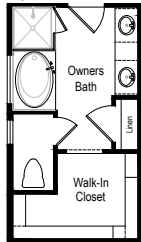


MAIN LEVEL



BASEMENT LEVEL

Optional Grand Bath



1825 PLAN

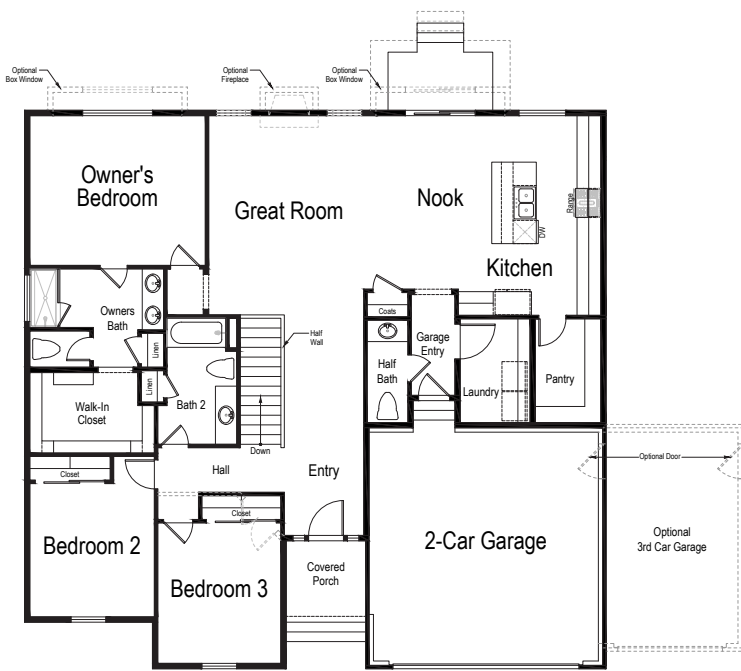
1,862 Total Finished Sq. Ft. | 3,713 Total Sq. Ft. | 3 Bedrooms | 2.5 Bathrooms



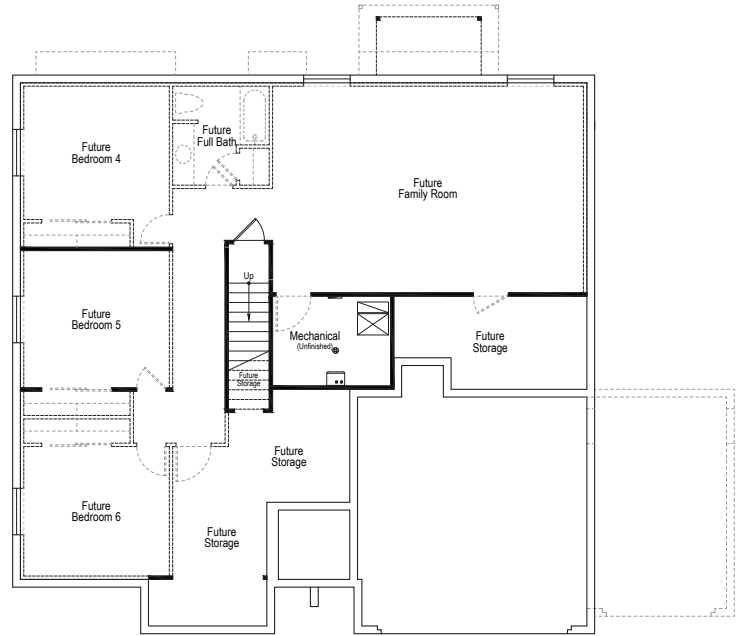
FARMHOUSE



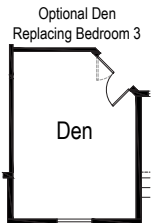
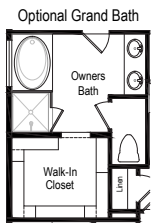
GARDEN



MAIN LEVEL



BASEMENT LEVEL



2000 PLAN

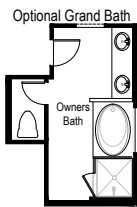
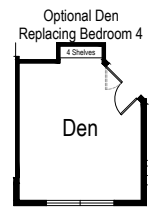
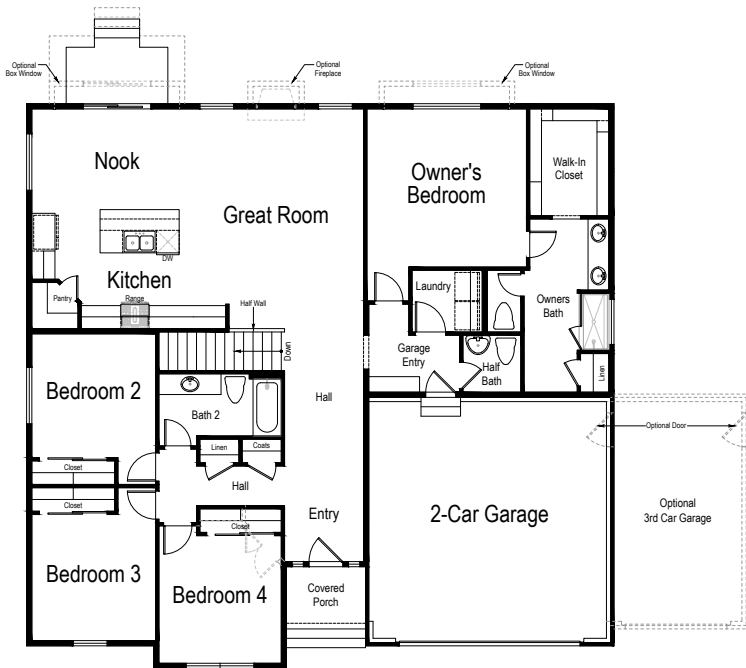
2,012 Total Finished Sq. Ft. | 3,994 Total Sq. Ft. | 4 Bedrooms | 2.5 Bathrooms



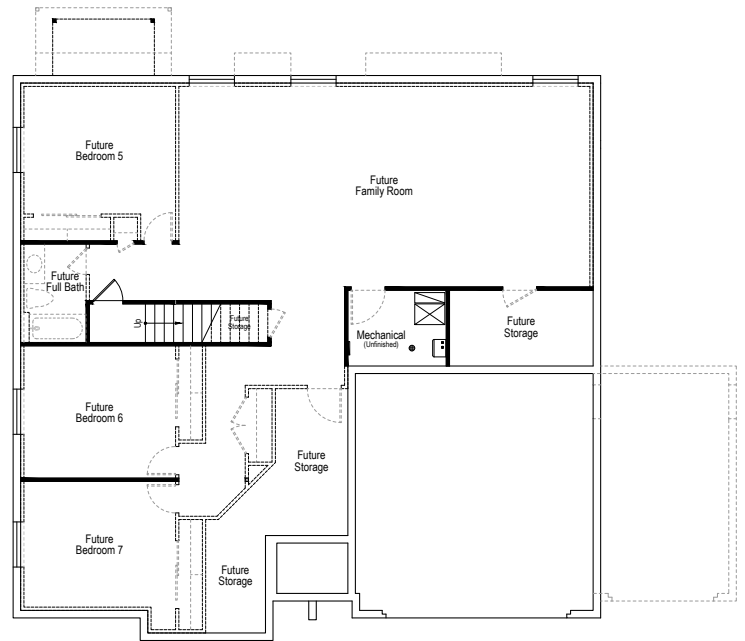
GARDEN



FARMHOUSE



MAIN LEVEL



BASEMENT LEVEL

2050 PLAN

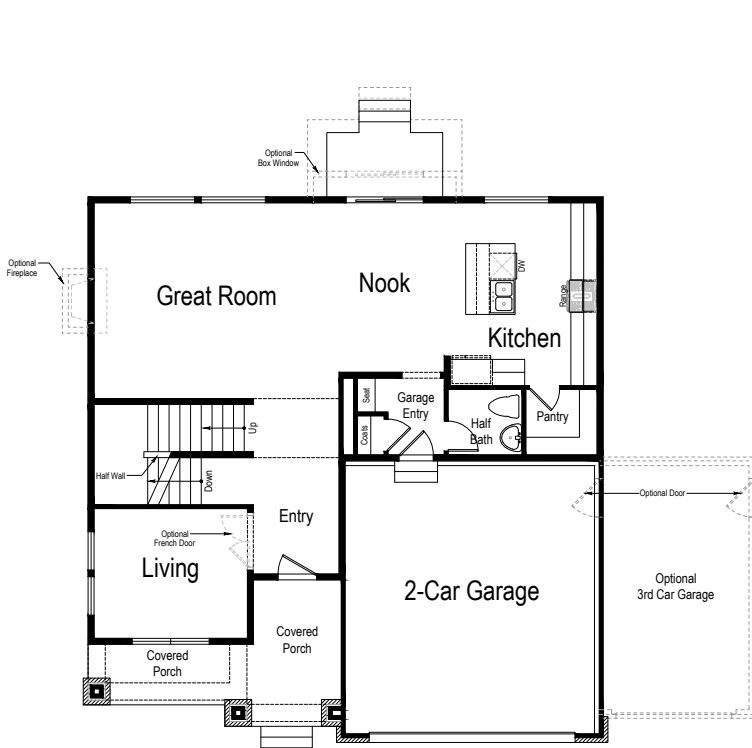
2,175 Total Finished Sq. Ft. | 3,288 Total Sq. Ft. | 3 Bedrooms | 2.5 Bathrooms



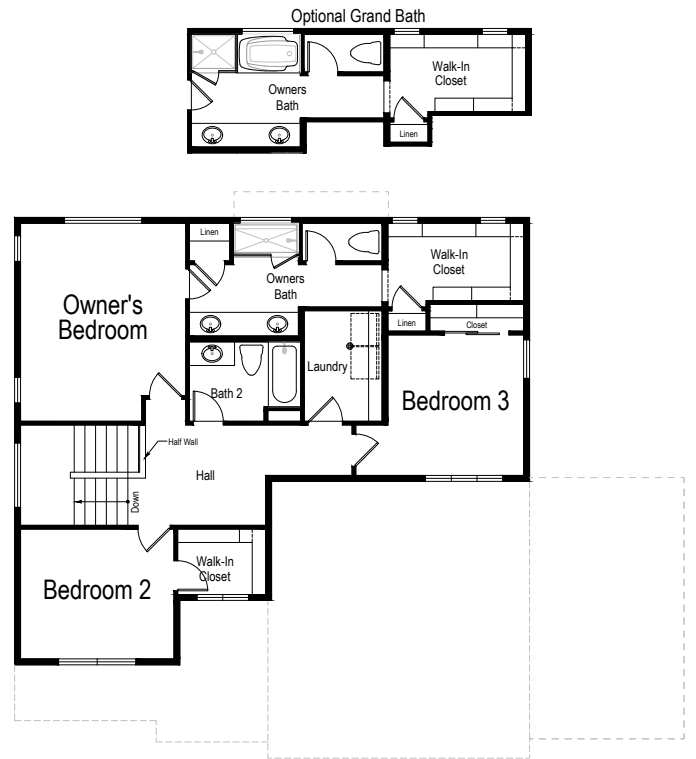
CRAFTSMAN



FARMHOUSE



MAIN LEVEL



UPPER LEVEL

2200 PLAN

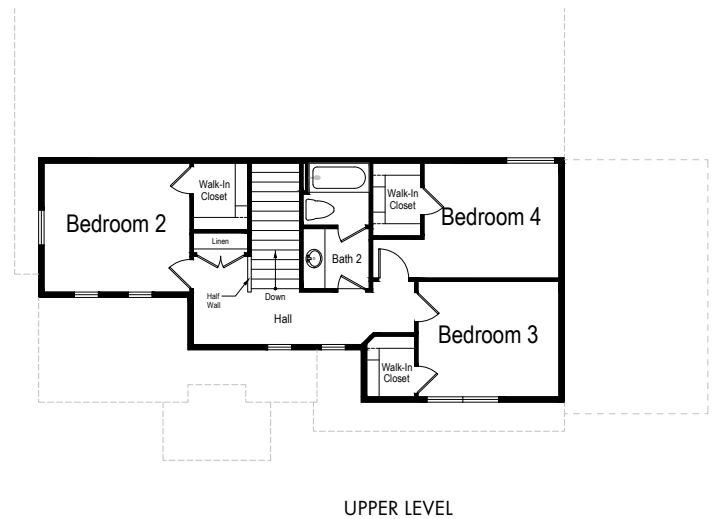
2,283 Total Finished Sq. Ft. | 3,984 Total Sq. Ft. | 4 Bedrooms | 2.5 Bathrooms



FARMHOUSE



GARDEN



2400 PLAN

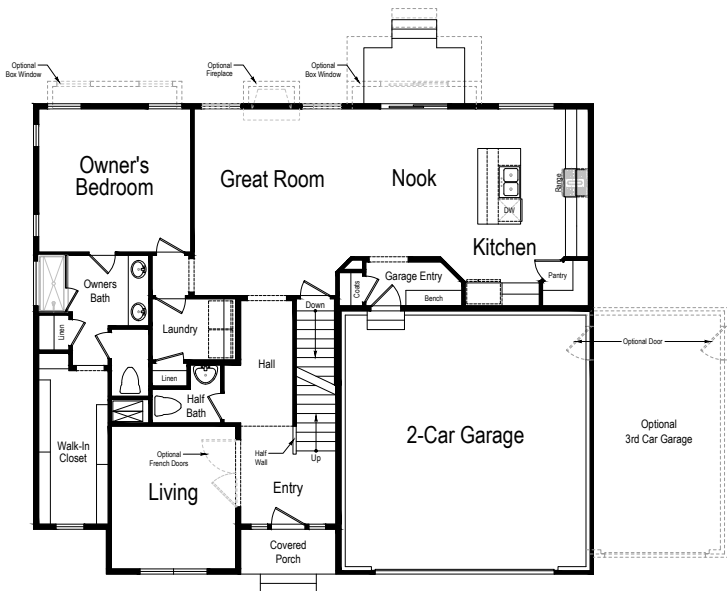
2,443 Total Finished Sq. Ft. | 3,969 Total Sq. Ft. | 4 Bedrooms | 2.5 Bathrooms



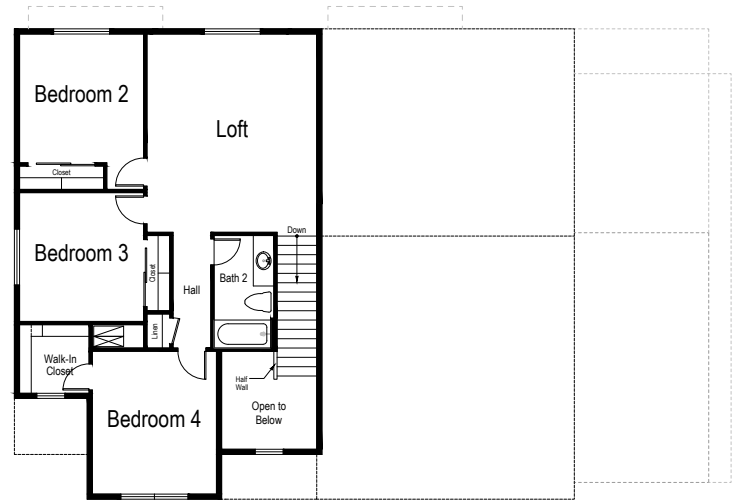
FARMHOUSE



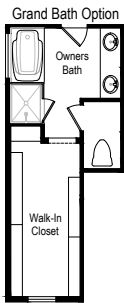
GARDEN



MAIN LEVEL



UPPER LEVEL



2500 PLAN

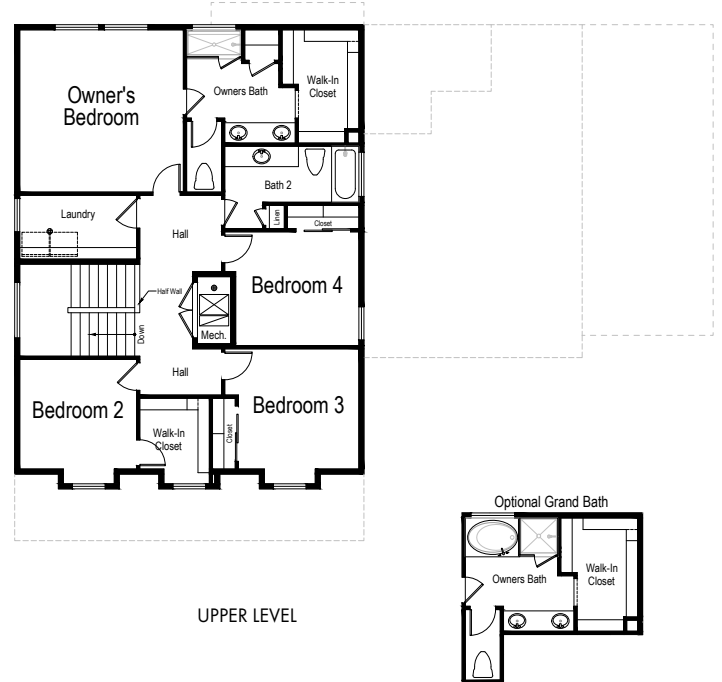
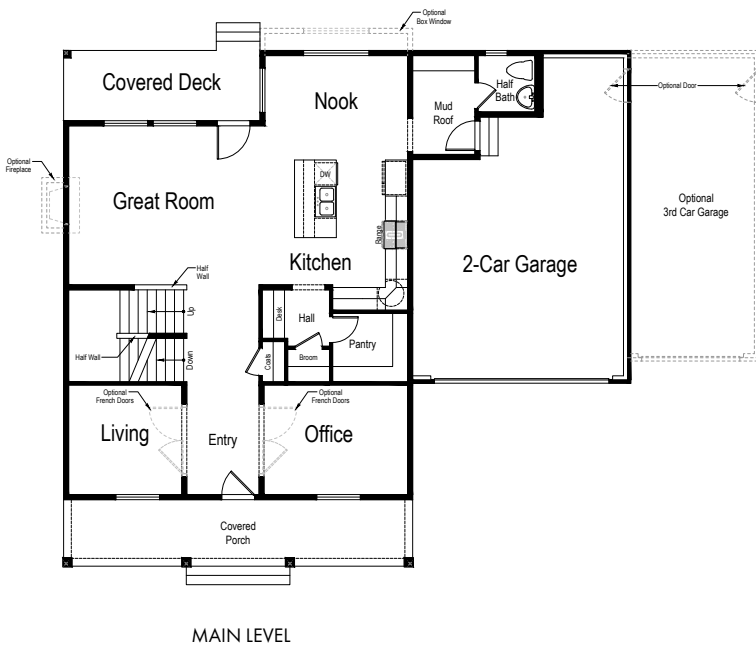
2,613 Total Finished Sq. Ft. | 3,971 Total Sq. Ft. | 4 Bedrooms | 2.5 Bathrooms



FARMHOUSE



TRADITIONAL



3000 PLAN

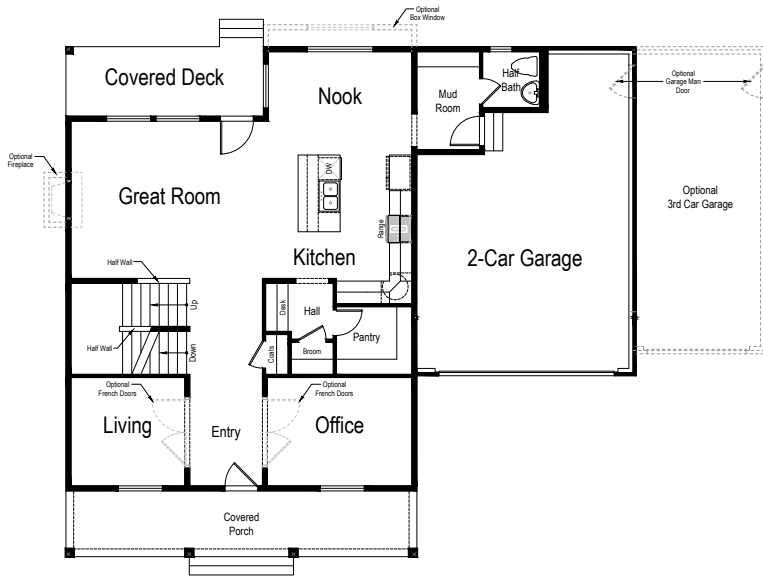
3,133 Total Finished Sq. Ft. | 4,491 Total Sq. Ft. | 3 Bedrooms | 2.5 Bathrooms



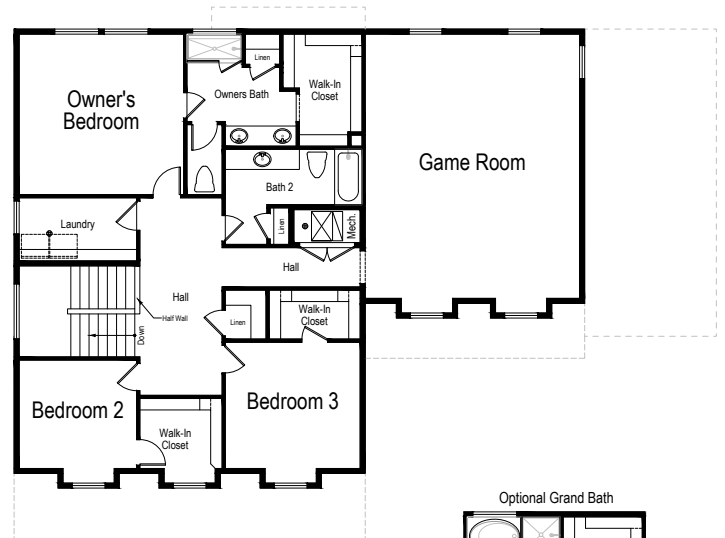
FARMHOUSE



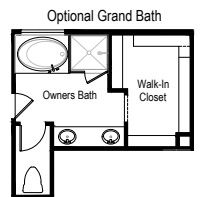
TRADITIONAL



MAIN LEVEL



UPPER LEVEL





IVORYHOMES

Utah's Number One Homebuilder®

IvoryHomes.com

