



IVORY HOMES

CARRIAGE LANE COTTAGES



January 2024



HOME PLANS

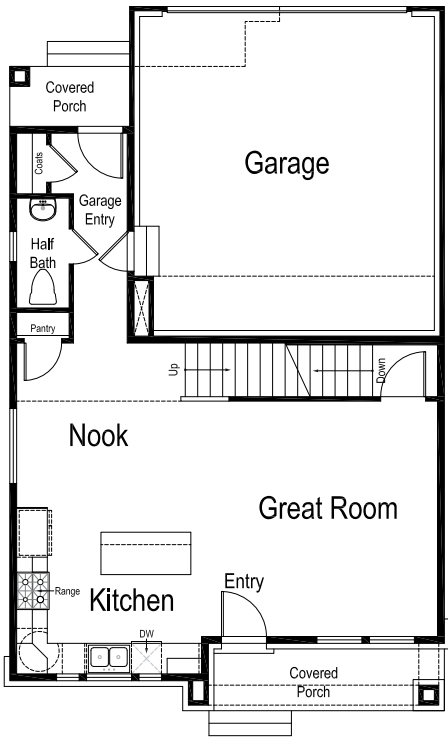
PLAN NAME	TOTAL FINISHED SQUARE FOOTAGE	TOTAL SQUARE FOOTAGE	BEDROOMS (FINISHED)	BATHROOMS (FINISHED)	WIDTH	DEPTH
Norwalk	1,900	2,672	3	2 1/2	29' 0"	47' 0"
Rockport	1,818	2,604	3	2 1/2	26' 0"	54' 5"
Providence	1,710	2,495	3	2 1/2	26' 0"	55' 0"
Plymouth	1,762	2,429	3	2 1/2	29' 0"	47' 0"
Salem	1,679	2,362	3	2 1/2	29' 0"	48' 0"



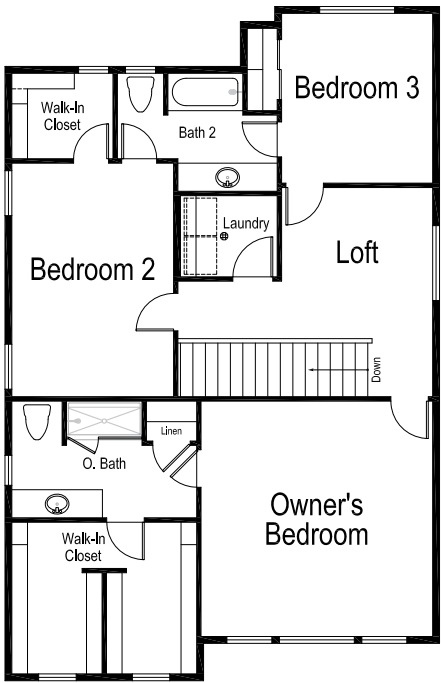
Included Exterior Option



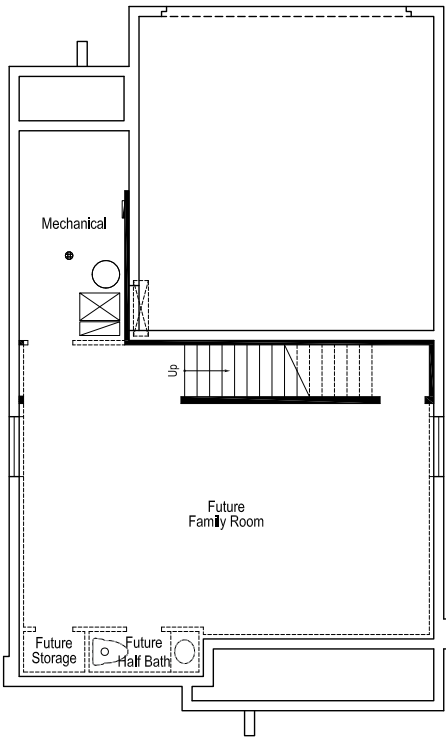
Premium Exterior Option



MAIN LEVEL



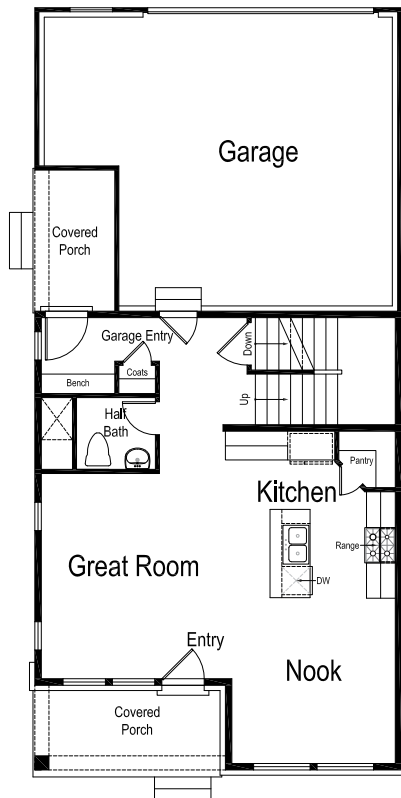
UPPER LEVEL



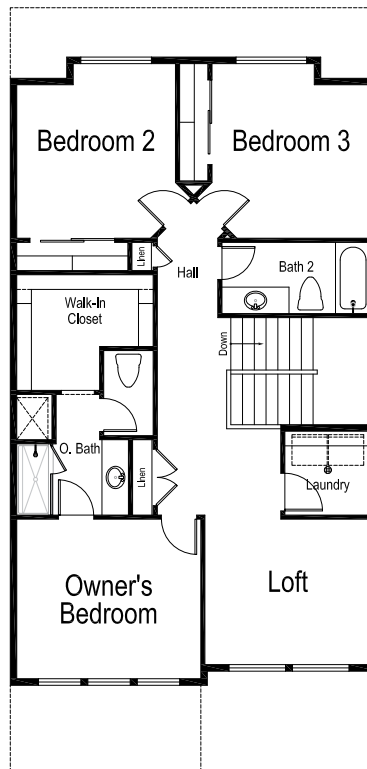
LOWER LEVEL

ROCKPORT

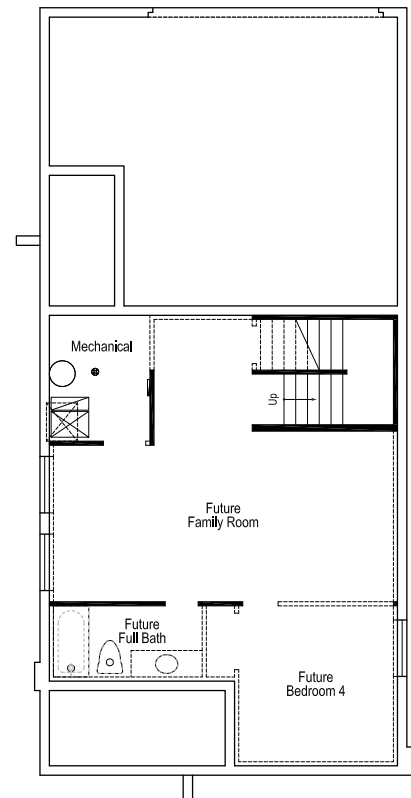
1,818 Total Finished Sq. Ft. | 2,604 Total Sq. Ft. | 3 Bedrooms | 2 1/2 Bathrooms



MAIN LEVEL



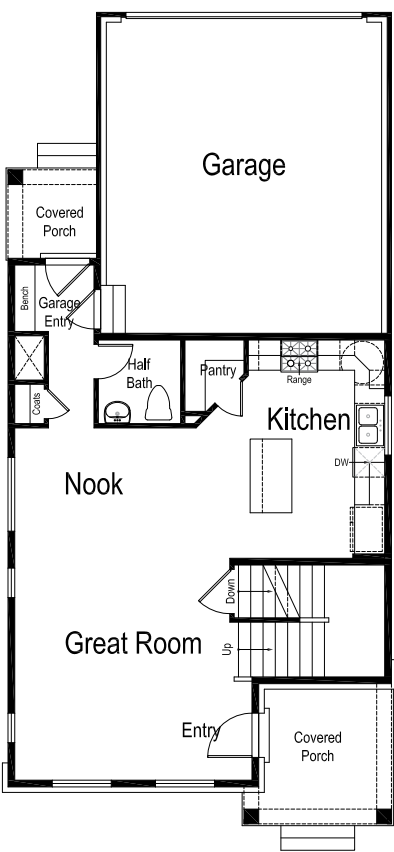
UPPER LEVEL



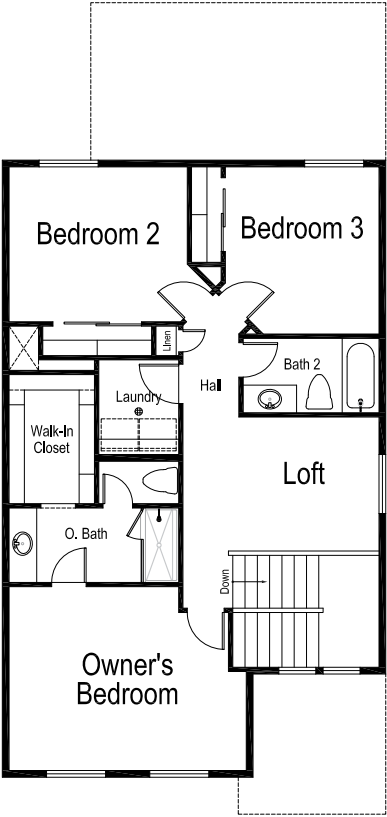
LOWER LEVEL

PROVIDENCE

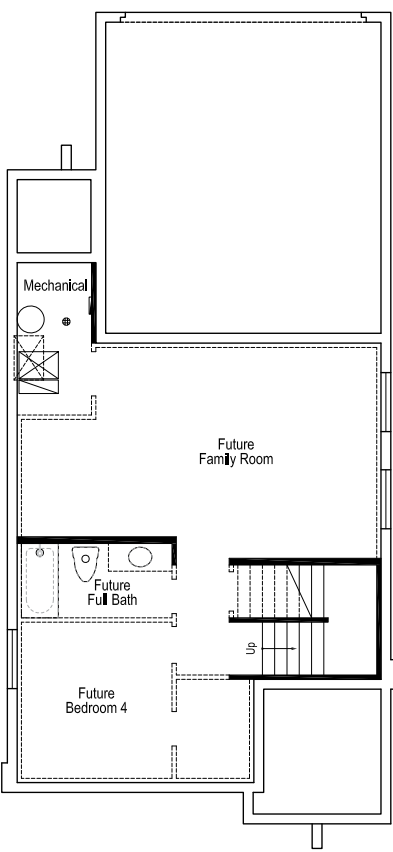
1,710 Total Finished Sq. Ft. | 2,495 Total Sq. Ft. | 3 Bedrooms | 2 1/2 Bathrooms



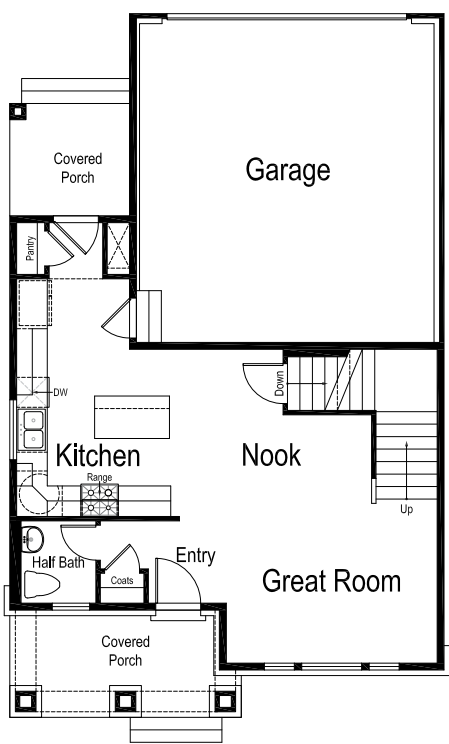
MAIN LEVEL



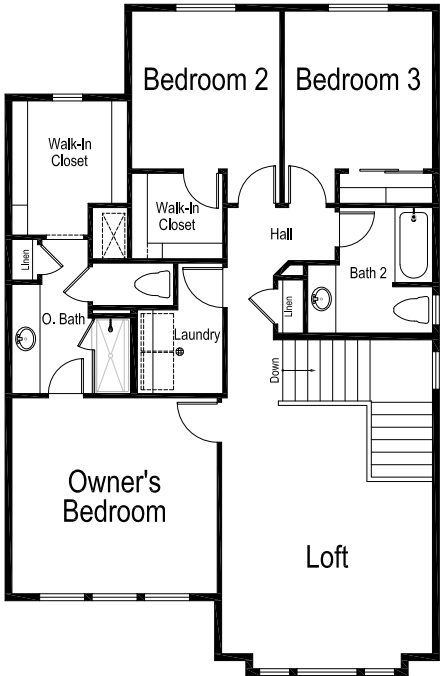
UPPER LEVEL



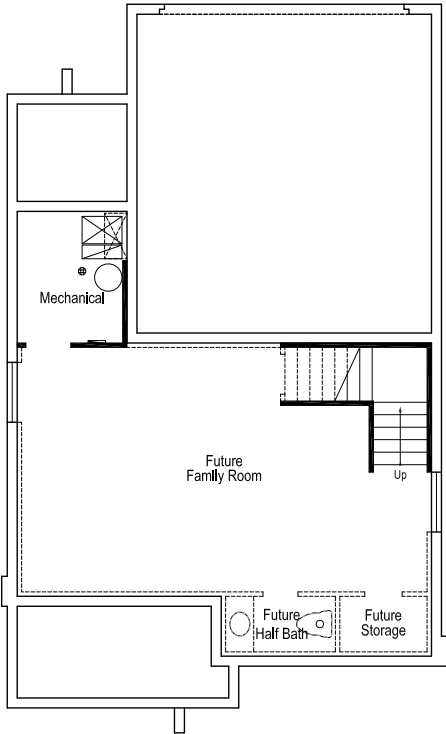
LOWER LEVEL



MAIN LEVEL



UPPER LEVEL



LOWER LEVEL

SALEM

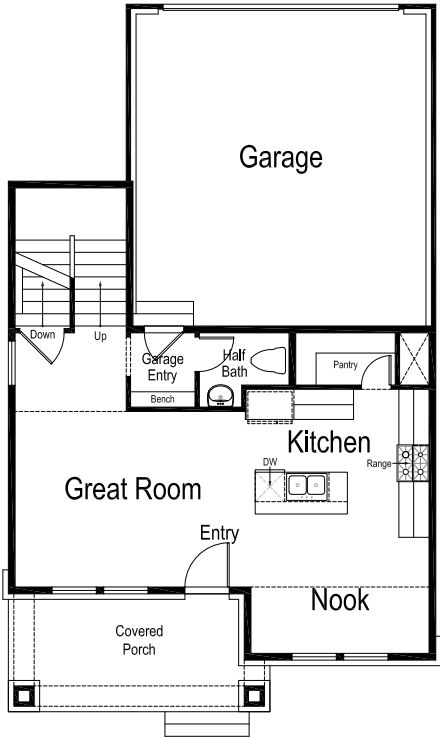
1,679 Total Finished Sq. Ft. | 2,362 Total Sq. Ft. | 3 Bedrooms | 2 1/2 Bathrooms



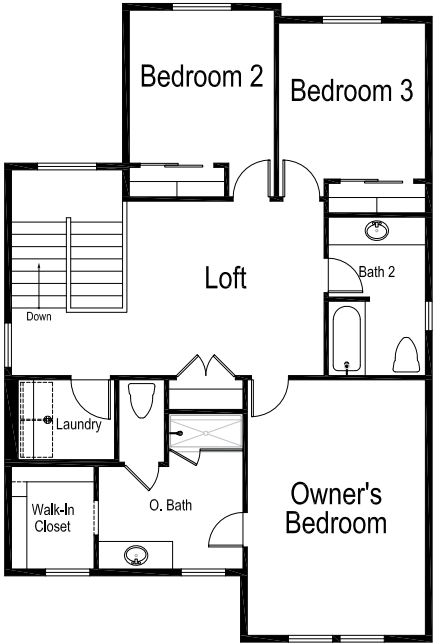
Included Exterior Option



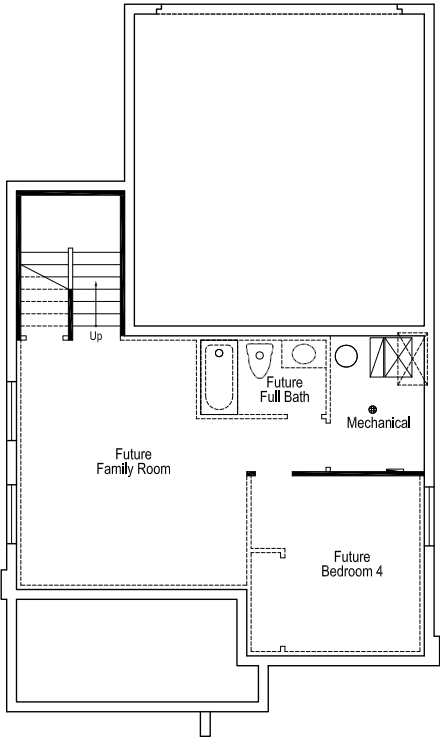
Premium Exterior Option



MAIN LEVEL



UPPER LEVEL



LOWER LEVEL



IvoryHomes.com

