



IVORYHOMES E-VILLAS



January 2024



ABOUT E-VILLAS

Designed to be the most energy efficient home on the block all while utilizing every square foot of its modern architecture, the E-Villas at Holbrook Place will be some of the most innovative homes Ivory Homes has built to date.

Introduced with a Smart Home HUB option that controls lighting, security locks, doorbell cameras and home temperatures, these homes are for both the tech savvy, as well those who want technology to make their lives easier. Each home also sports Ivory Green features such as UV-blocking windows, EV ready garages, water-wise local scaping, and water-saving faucets, showers, and other utilities making them one our most energy efficient plans yet.



HOME PLANS

PLAN NAME	FINISHED SQUARE FOOTAGE	UNFINISHED SQUARE FOOTAGE	BEDROOMS (FINISHED)	BATHROOMS (FINISHED)	WIDTH	DEPTH
Breckenridge	2,248	399	3-4	2.5-3.5	30'-11"	38' 5"
Jackson	2,604	428	3-4	2.5-3.5	33'-5"	35' 5"
Tahoe	2,250	380	3-4	2.5-3.5	31' 5"	36' 5"
Whistler	2,547	448	3-4	2.5-3.5	32' 5"	38' 5"
Kirkwood	1,591	479	3	3	32' 11"	36' 5"
Keystone	1,572	448	3	3	32' 5"	39' 11"
Sundance	1,515	424	3	2.5-3	32' 5"	39' 11"



UNIQUE PLAN FEATURES

- Recessed garage for every home, for more driveway parking.
- Large covered patio off the great room and above the driveway on all 3-story homes.
- Home office or optional 4th bedroom on entry level next to the garage.
- Included Ivory energy features (HERS Scores, Furnace, Insulation, Windows, etc.)
- Landscaping
- Large Owner's suites
- Smart Home HUB option
- Innovative architectural styles (Scandia, Ballpark, & Farmhouse elevations)
- 10' ceilings on great room level in 3-story homes





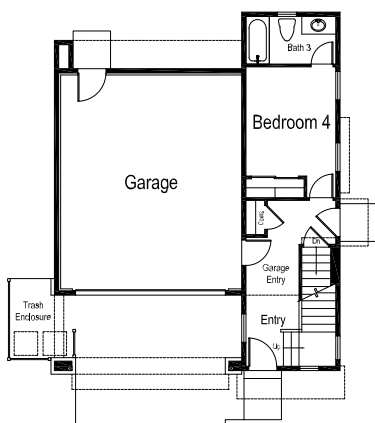
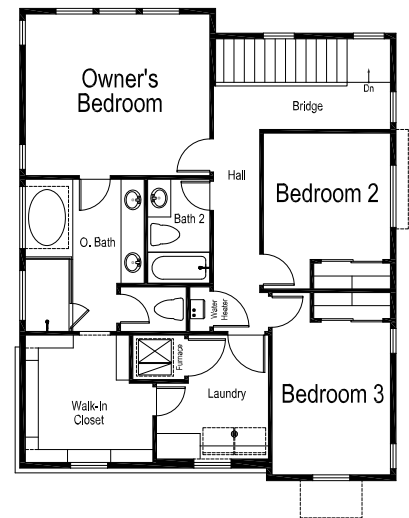
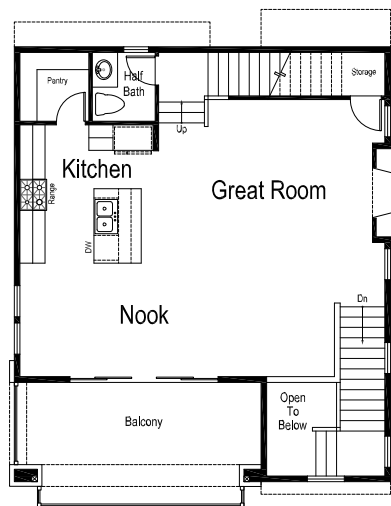
Ballpark



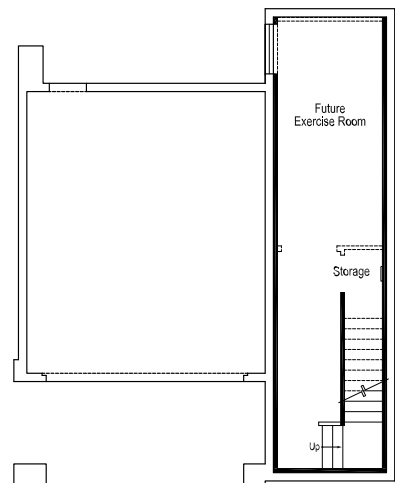
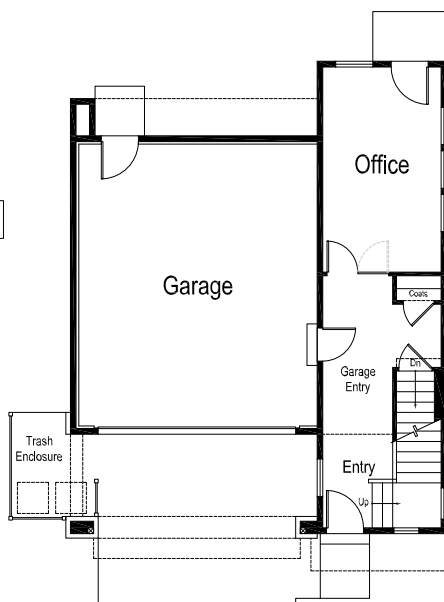
Farmhouse

BRECKENRIDGE

3-Story with Finished Basement 2,248 Sq. Ft.
Unfinished Basement 399 Sq. Ft. | 3-4 Bedrooms | 2.5 - 3.5 Baths



Optional Bedroom 4
In Lieu of Office





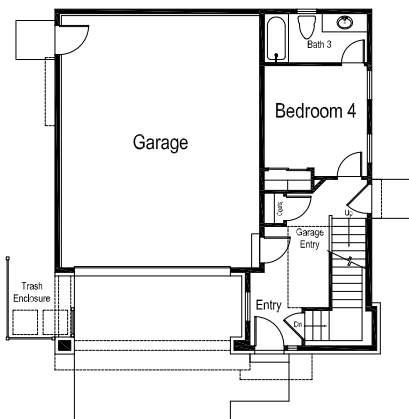
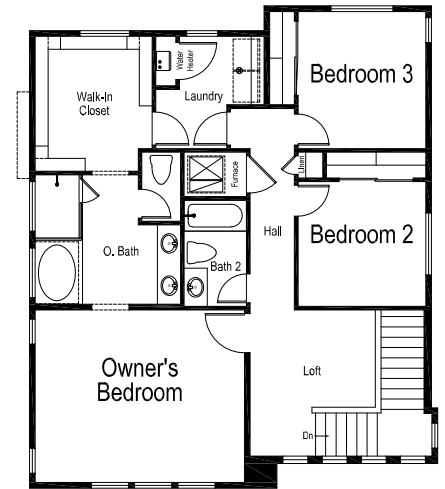
Ballpark



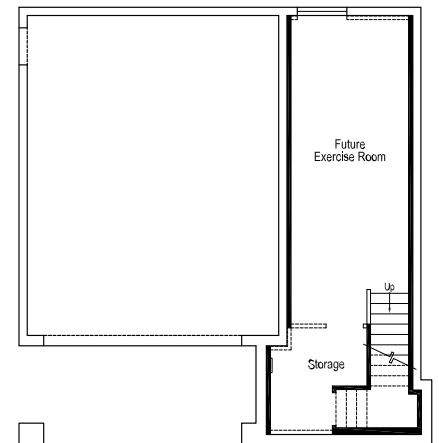
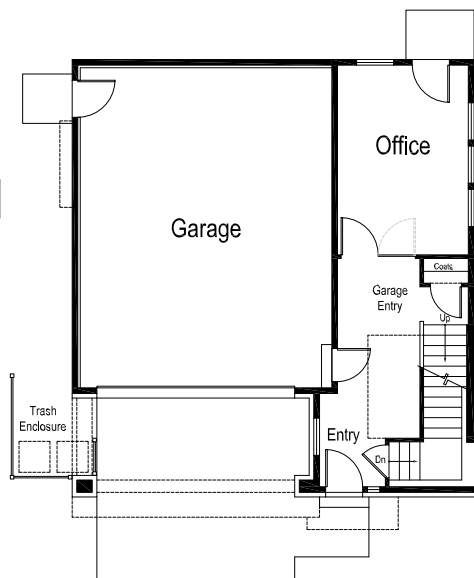
Scandia

JACKSON

3-Story with Finished Basement 2,604 Sq. Ft.
Unfinished Basement 428 Sq. Ft. | 3-4 Bedrooms | 2.5 - 3.5 Baths



Optional Bedroom 4
In Lieu of Office





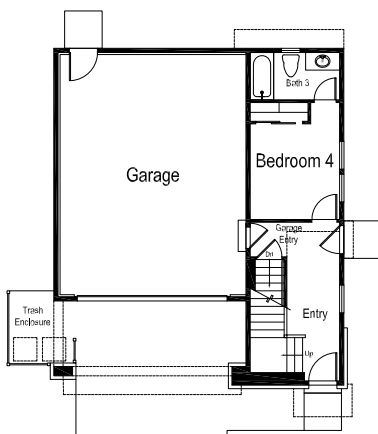
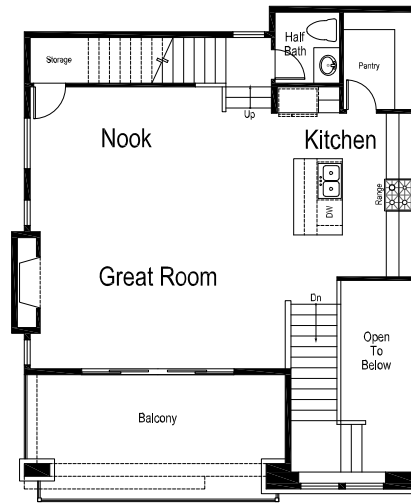
Farmhouse



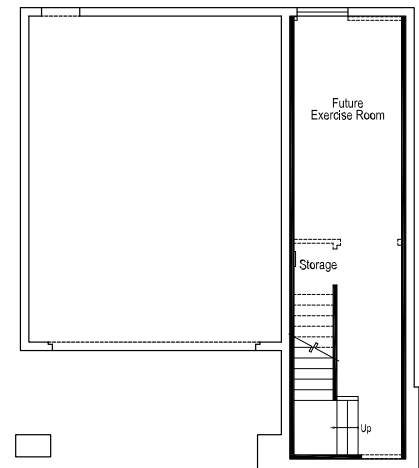
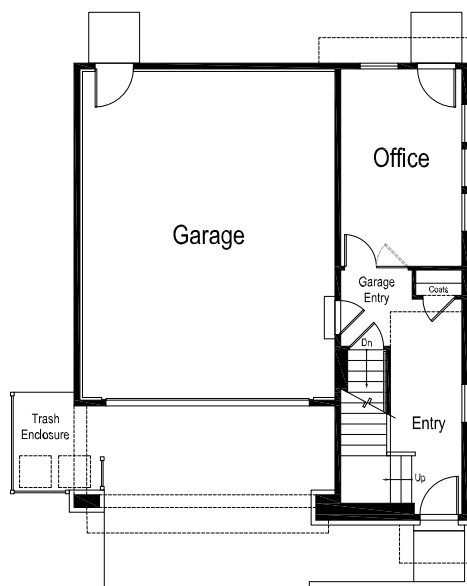
Scandia

TAHOE

3-Story with Finished Basement 2,248 Sq. Ft.
Unfinished Basement 399 Sq. Ft. | 3-4 Bedrooms | 2.5 - 3.5 Baths



Optional Bedroom 4
In Lieu of Office





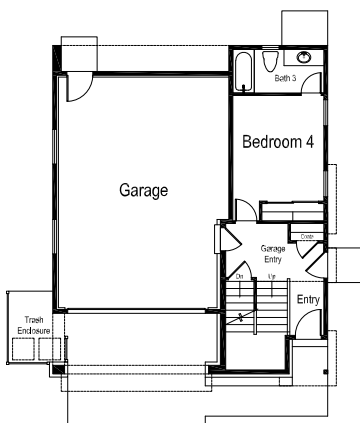
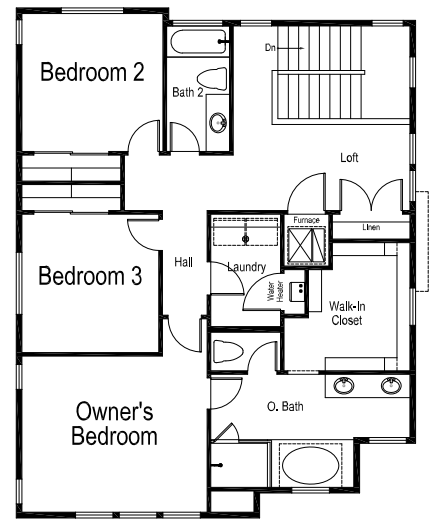
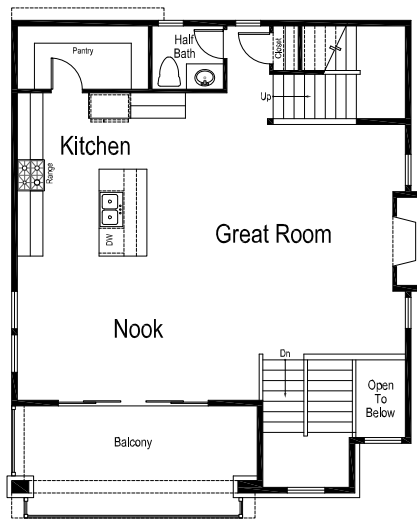
Ballpark



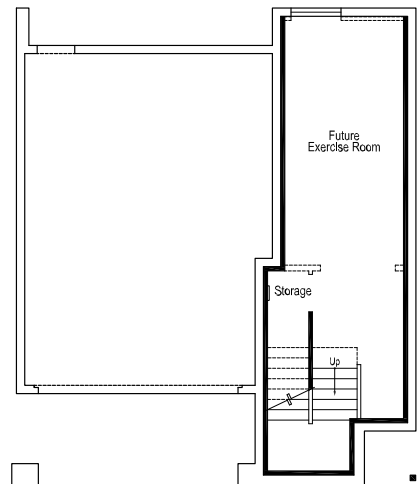
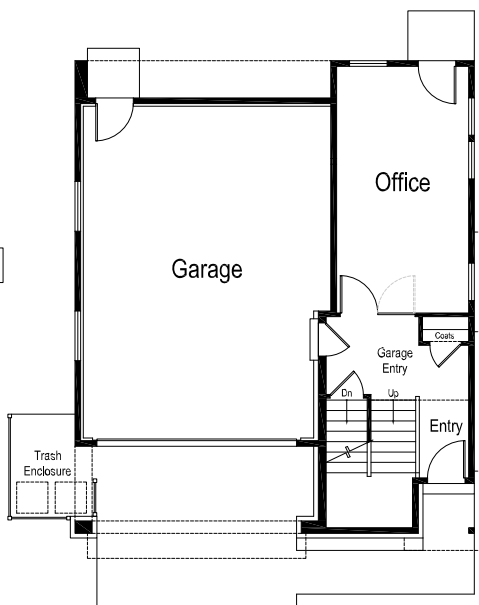
Farmhouse

WHISTLER

3-Story with Finished Basement 2,547 Sq. Ft.
Unfinished Basement 448 Sq. Ft. | 3-4 Bedrooms | 2.5 - 3.5 Baths



Optional Bedroom 4
In Lieu of Office





Ballpark



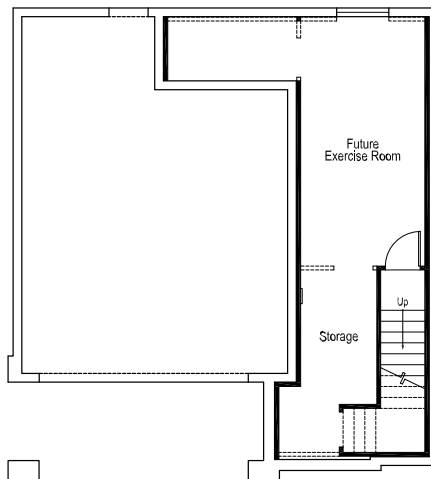
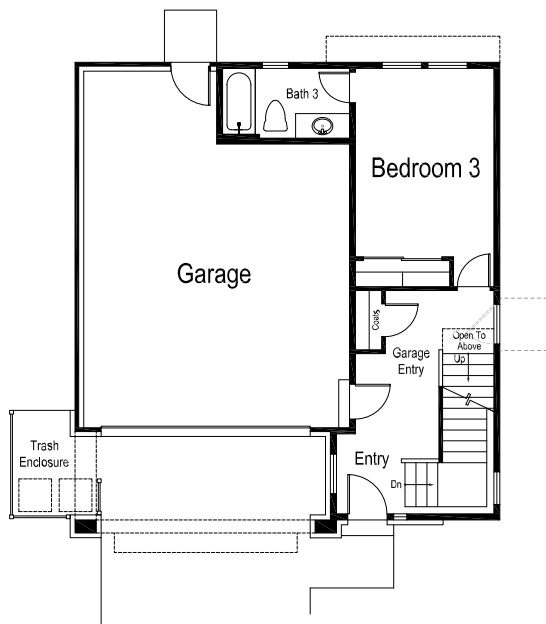
Farmhouse



Scandia

KIRKWOOD

2-Story with Finished Basement 1,591 Sq. Ft.
Unfinished Basement 479 Sq. Ft. | 3 Bedrooms | 3 Baths





Ballpark



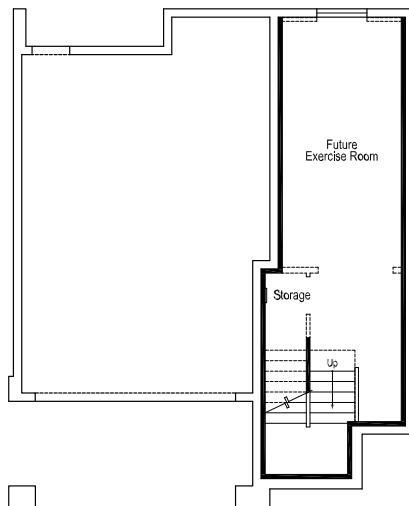
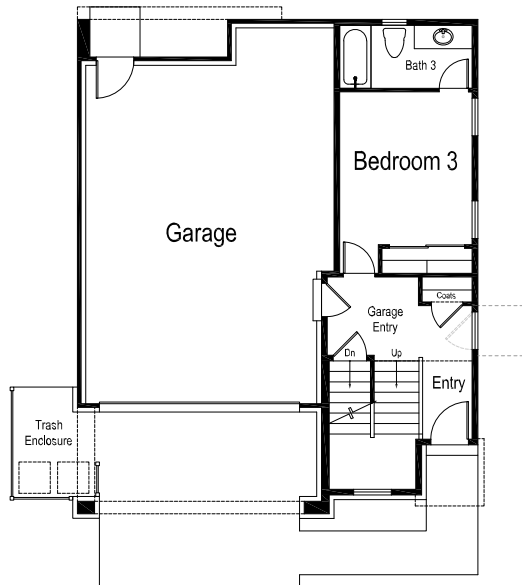
Farmhouse



Scandia

KEYSTONE

2-Story with Finished Basement 1,572 Sq. Ft.
Unfinished Basement 448 Sq. Ft. | 3 Bedrooms | 3 Baths





SUNDANCE

2-Story with Finished Basement 1,515 Sq. Ft.
Unfinished Basement 424 Sq. Ft. | 3 Bedrooms | 3 Baths





ivoryhomes.com

