



IVORY HOMES COLLECTIONS & GARDENS



January 2024



Quality, Design, & Value

The Ivory Collection was created by Ivory Homes, Utah's Number One Homebuilder®, to bring a new combination of quality, design, and value to Utah. In a difficult home building market of rising costs, the Ivory Collection brings an innovative and streamlined process option to home buyers. Get more style, design, quality, and value when you build an Ivory Collection home.

	PLAN NAME	TOTAL FINISHED SQUARE FOOTAGE	TOTAL UNFINISHED SQUARE FOOTAGE	TOTAL SQUARE FOOTAGE	BEDROOMS (FINISHED)	BATHROOMS (FINISHED)	WIDTH	DEPTH
RAMBLERS	1350 Plan	1,405	1,374	2,779	3	2	42' 0"	45' 5"
	1425 Plan	1,453	1,404	2,857	3	2	46' 6"	47' 5"
	1550 Plan	1,574	1,665	3,239	3	2	48' 0"	45' 5"
	1700 Plan	1,685	1,738	3,423	3	2	48' 0"	47' 5"
	1825 Plan	1,862	1,851	3,713	3	2.5	50' 0"	48' 5"
	2000 Plan	2,012	1,982	3,994	4	2.5	52' 0"	50' 5"
TWO-STORY	2050 Plan	2,175	1,113	3,288	3	2.5	40' 0"	42' 5"
	2100 Plan	2,054	954	3,008	4	2.5	40' 0"	38' 5"
	2200 Plan	2,283	1,701	3,984	4	2.5	46' 6"	50' 5"
	2400 Plan	2,443	1,526	3,969	4	2.5	50' 0"	42' 5"
	2500 Plan	2,613	1,358	3,971	4	2.5	52' 0"	46' 6"
	3000 Plan	3,133	1,358	4,491	3	2.5	52' 0"	46' 6"

1350 PLAN

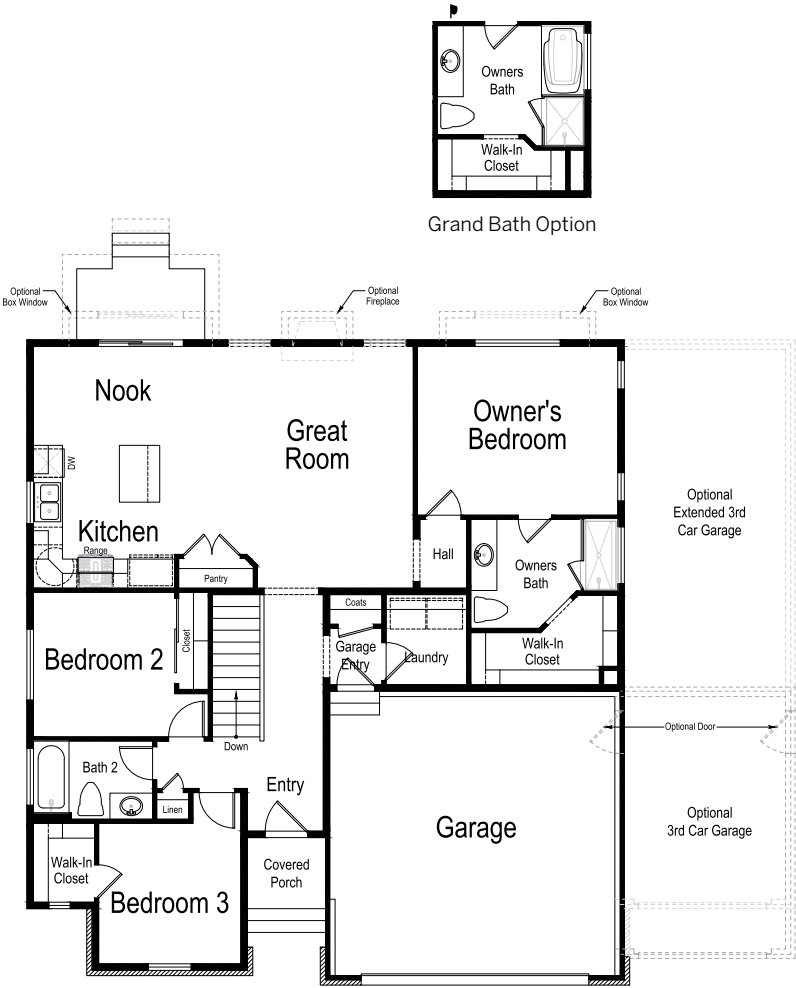
1,405 Total Finished Sq. Ft. | 2,779 Total Sq. Ft. | 3 Bedrooms | 2 Bathrooms



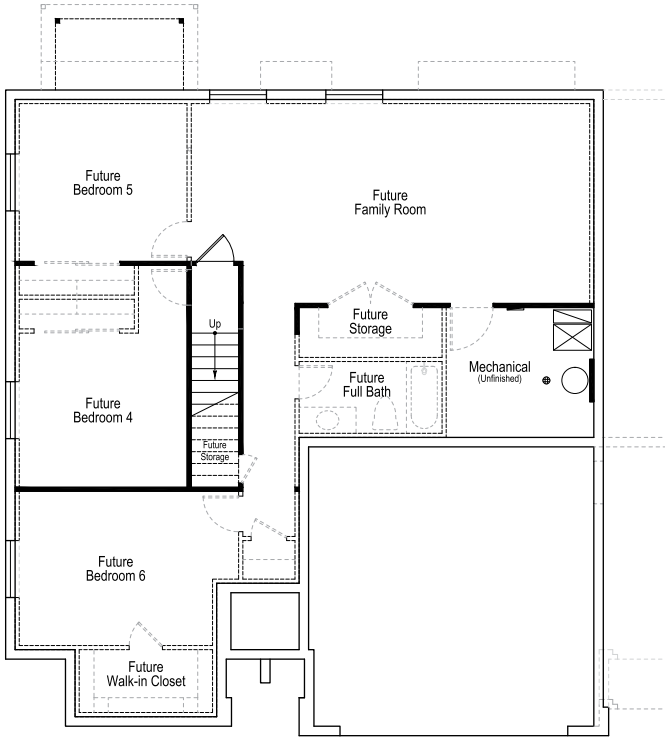
CRAFTSMAN



FARMHOUSE



Main Level



Lower Level

1425 PLAN

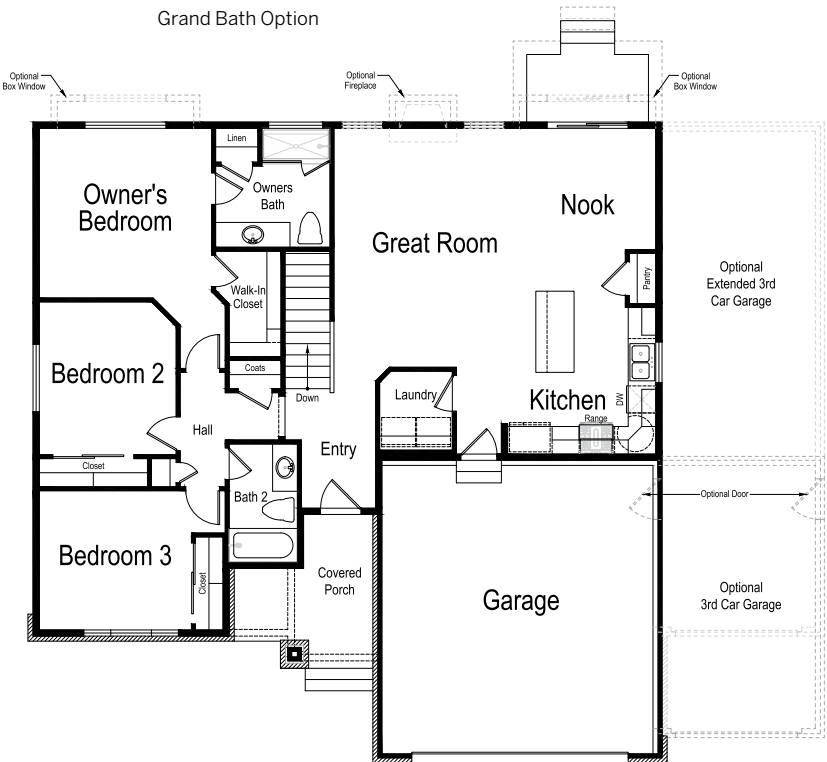
1,453 Total Finished Sq. Ft. | 2,857 Total Sq. Ft. | 3 Bedrooms | 2 Bathrooms



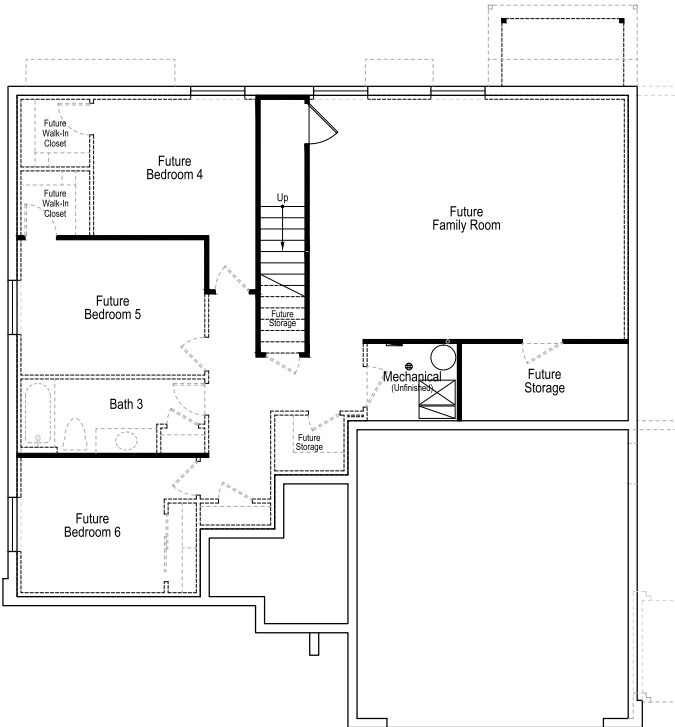
CRAFTSMAN



Grand Bath Option



Main Level



Lower Level

1550 PLAN

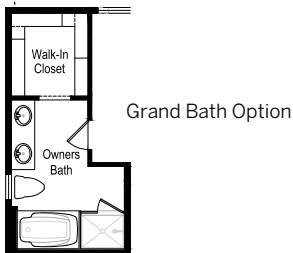
1,574 Total Finished Sq. Ft. | 3,239 Total Sq. Ft. | 3 Bedrooms | 2 Bathrooms



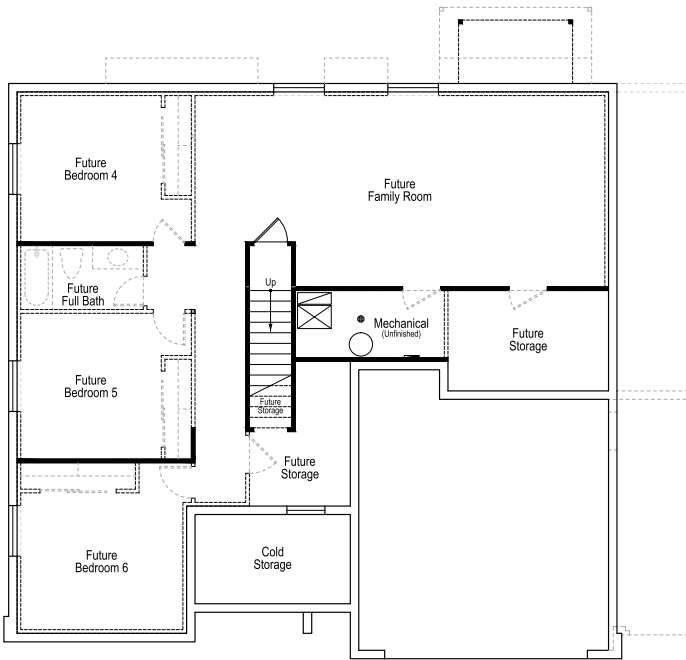
CRAFTSMAN



FARMHOUSE



Main Level



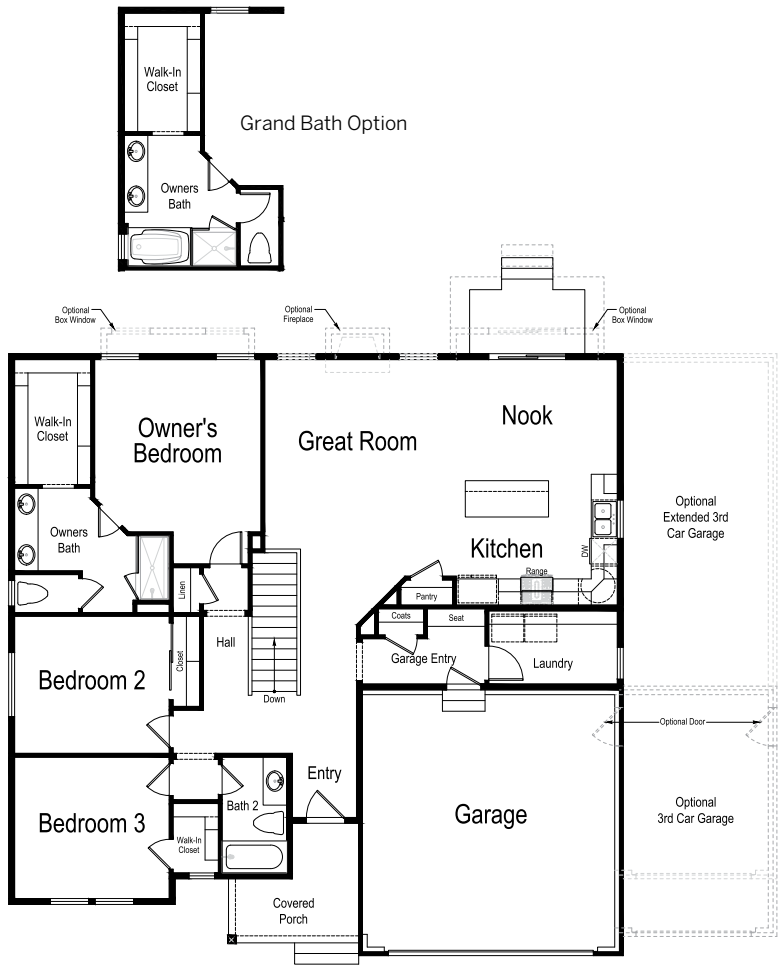
Lower Level

1700 PLAN

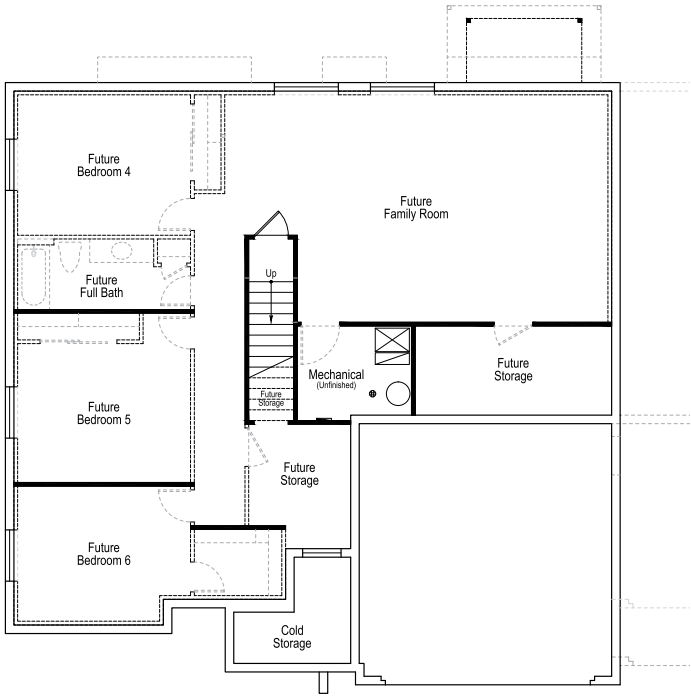
1,685 Total Finished Sq. Ft. | 3,423 Total Sq. Ft. | 3 Bedrooms | 2 Bathrooms



FARMHOUSE



Main Level



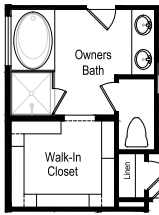
Lower Level

1825 PLAN

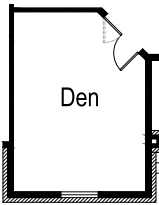
1,862 Total Finished Sq. Ft. | 3,713 Total Sq. Ft. | 3 Bedrooms | 2.5 Bathrooms



TRADITIONAL



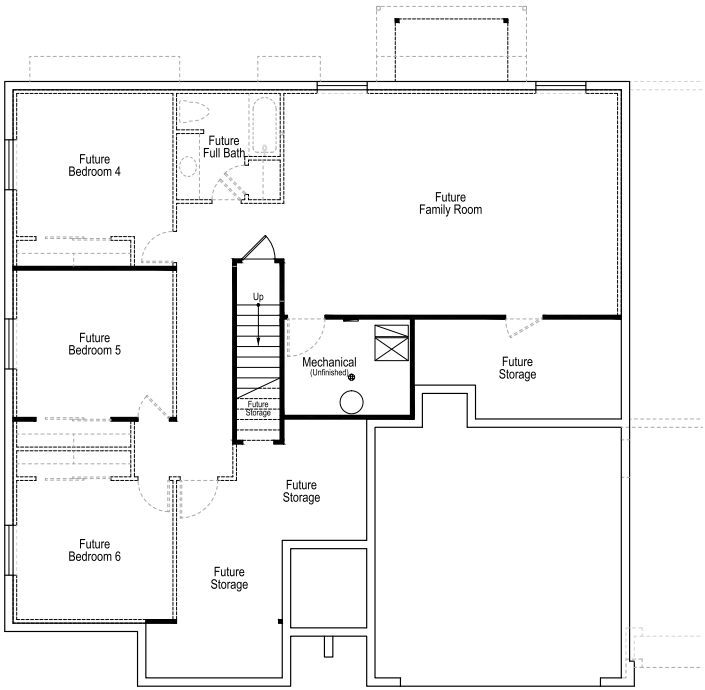
Grand Bath Option



Optional Den
Replacing Bedroom 3



Main Level



Lower Level

2000 PLAN

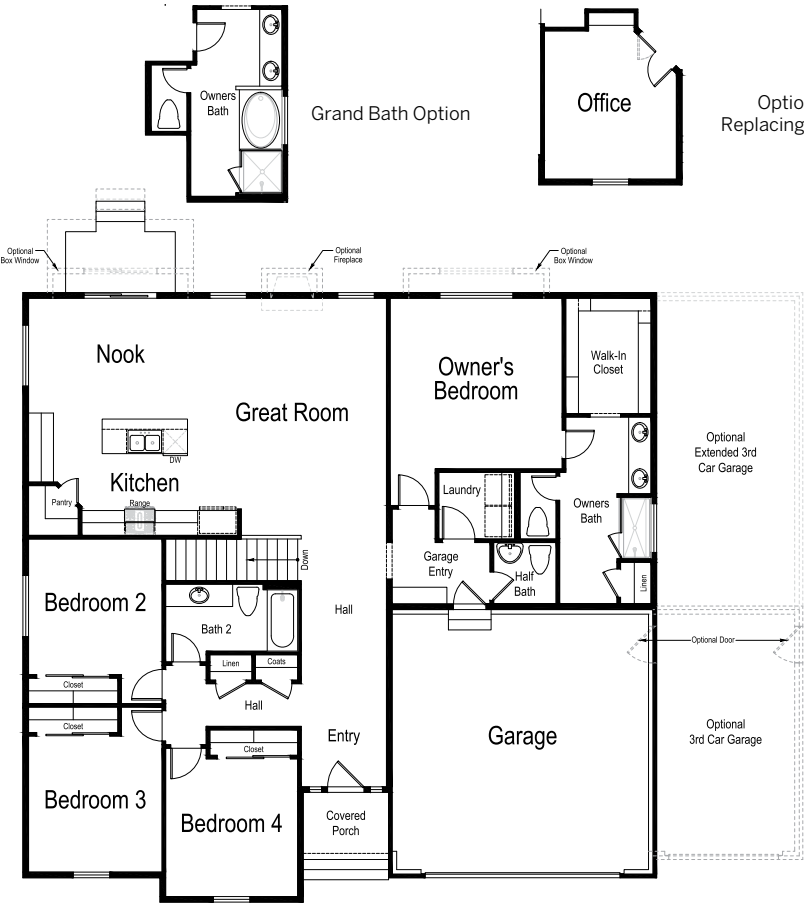
2,012 Total Finished Sq. Ft. | 3,994 Total Sq. Ft. | 4 Bedrooms | 2.5 Bathrooms



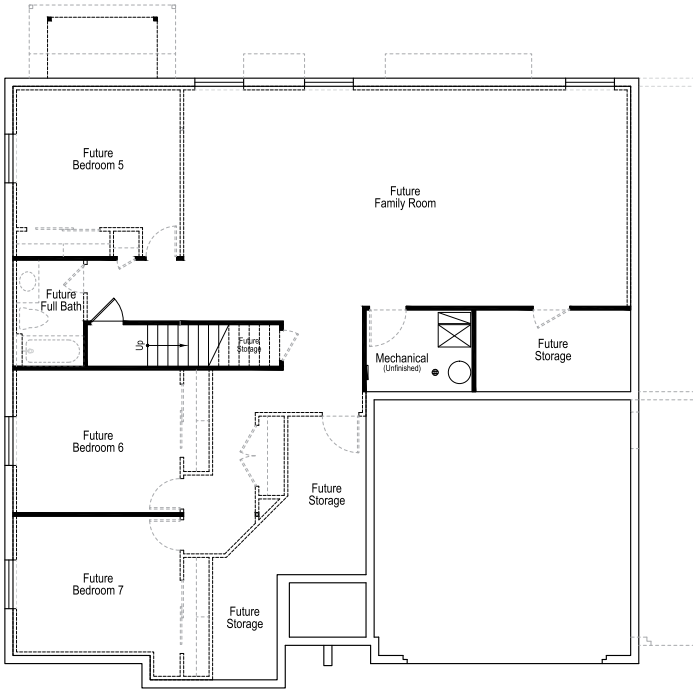
FARMHOUSE



TRADITIONAL



Main Level



Lower Level

2050 PLAN

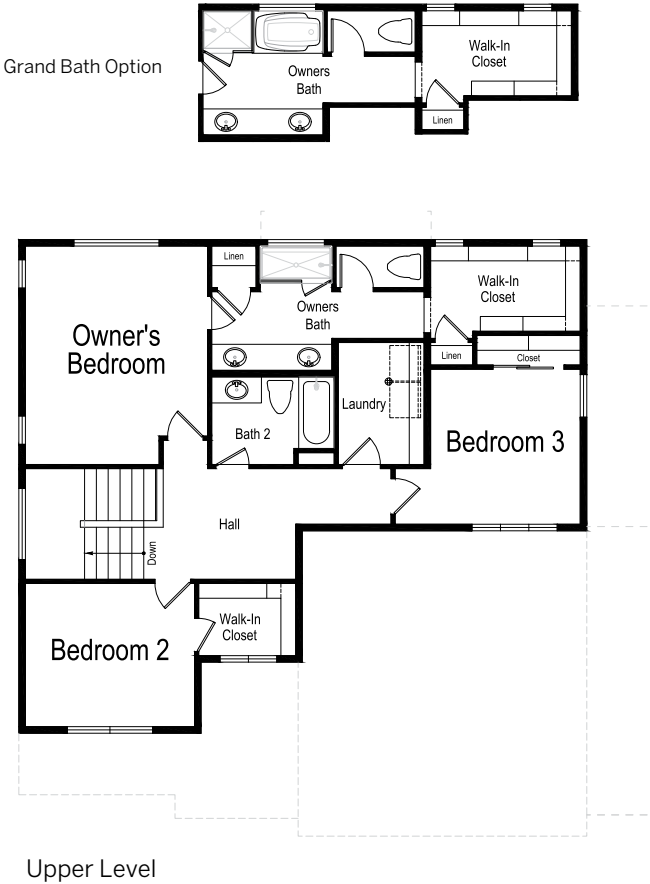
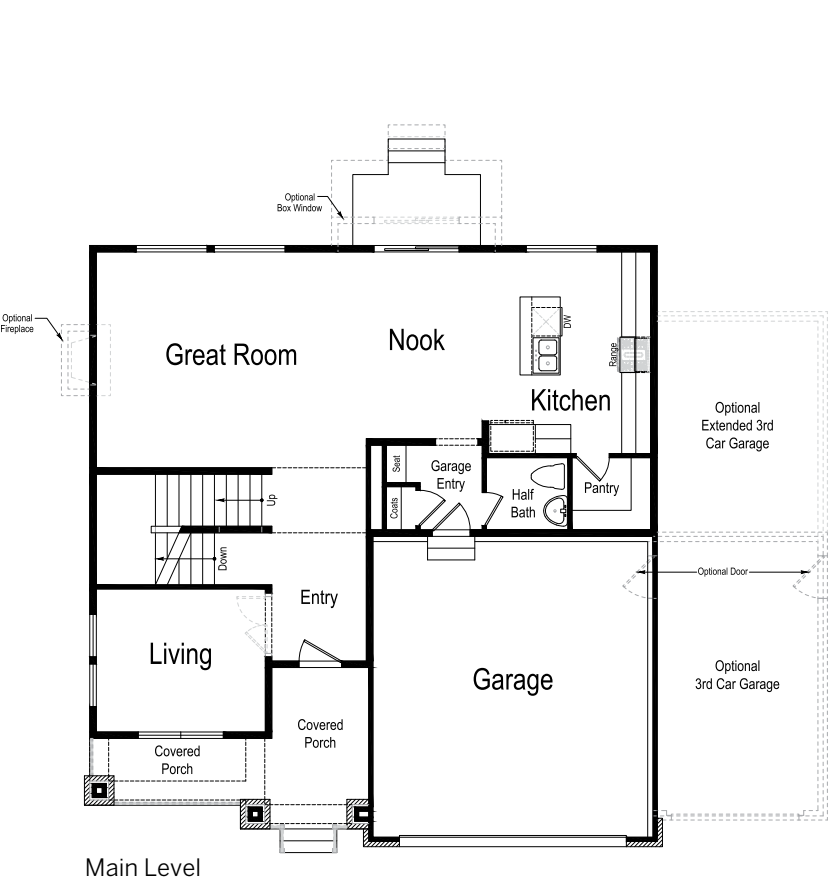
2,175 Total Finished Sq. Ft. | 3,288 Total Sq. Ft. | 3 Bedrooms | 2.5 Bathrooms



CRAFTSMAN



FARMHOUSE

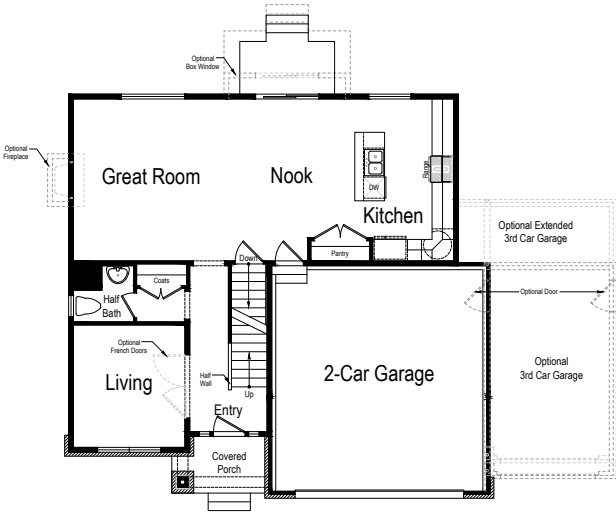


2100 PLAN

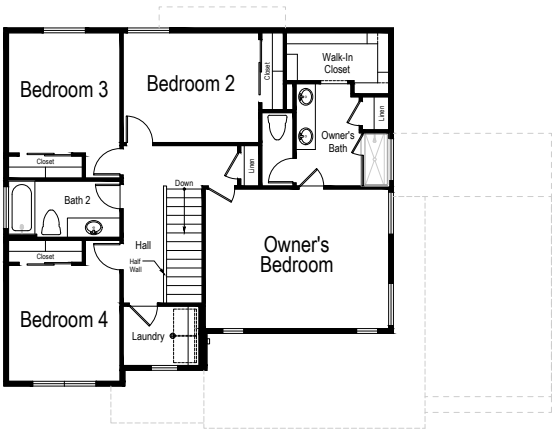
2,054 Total Finished Sq. Ft. | 3,008 Total Sq. Ft. | 4 Bedrooms | 2.5 Bathrooms



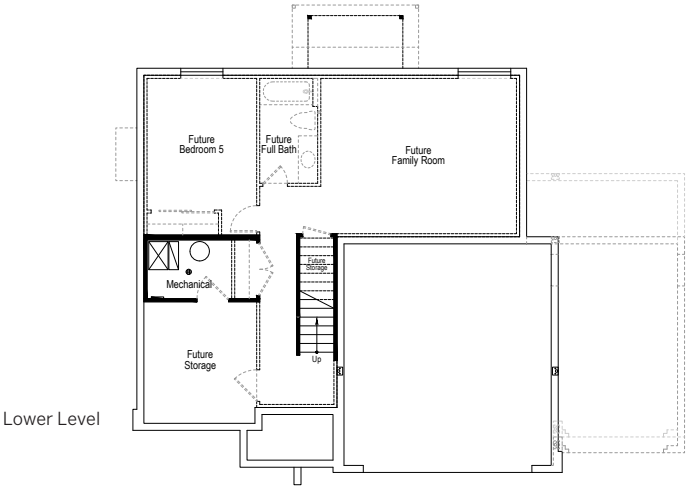
CRAFTSMAN



Main Level



Upper Level



Lower Level



2200 PLAN

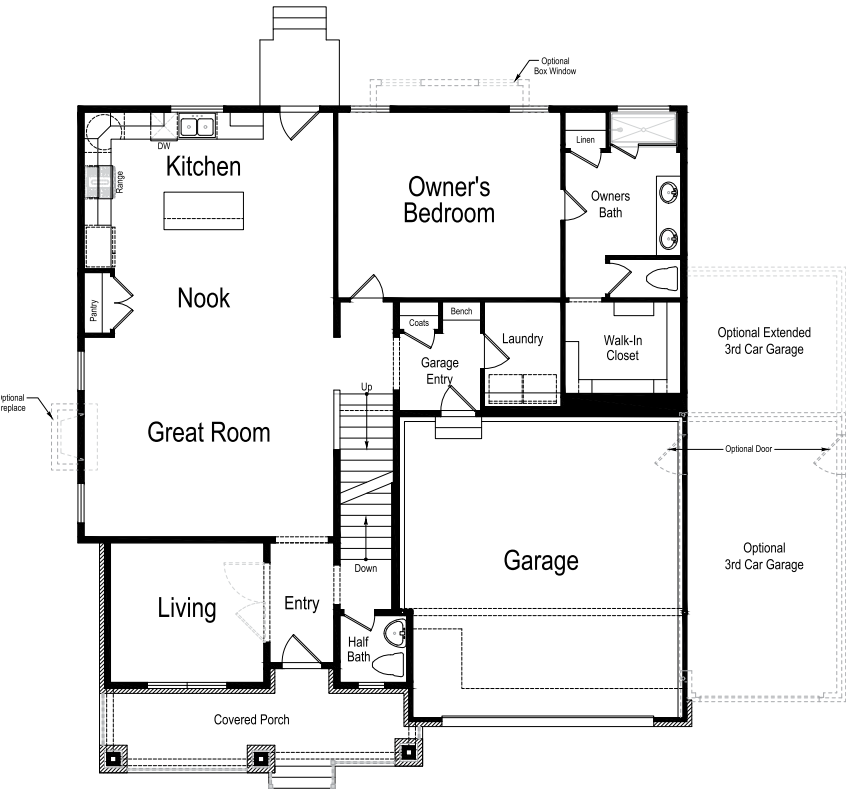
2,283 Total Finished Sq. Ft. | 3,984 Total Sq. Ft. | 4 Bedrooms | 2.5 Bathrooms



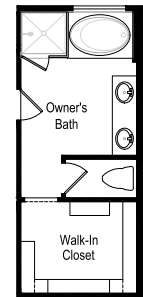
CRAFTSMAN



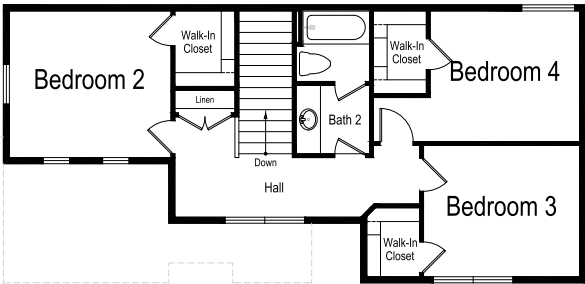
FARMHOUSE



Main Level



Grand Bath Option



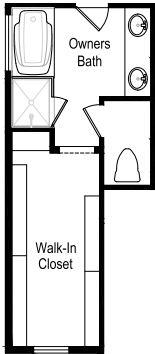
Upper Level

2400 PLAN

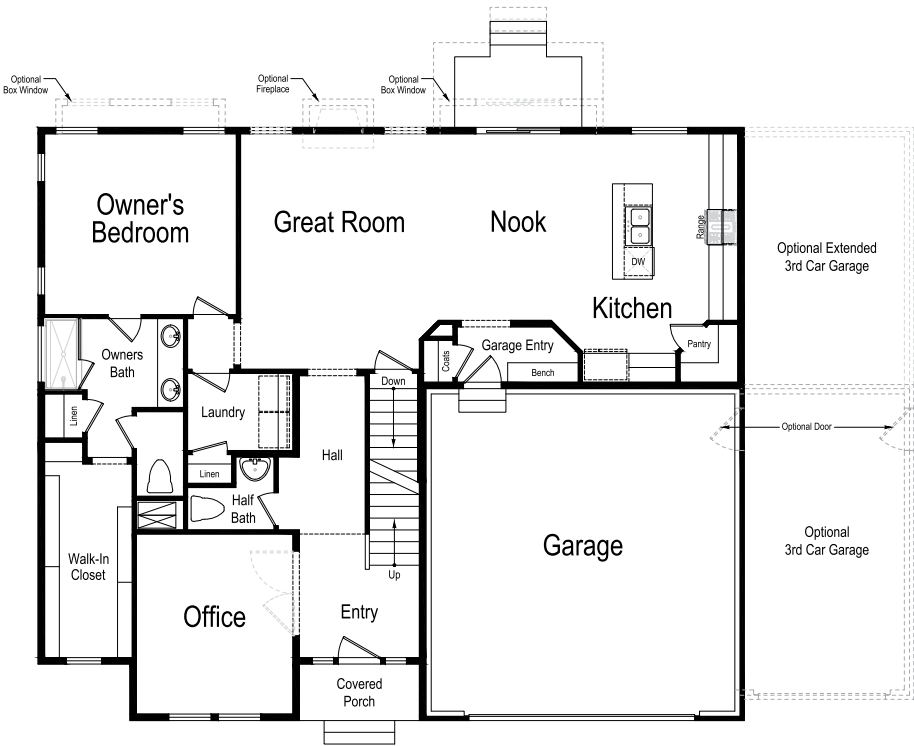
2,443 Total Finished Sq. Ft. | 3,969 Total Sq. Ft. | 4 Bedrooms | 2.5 Bathrooms



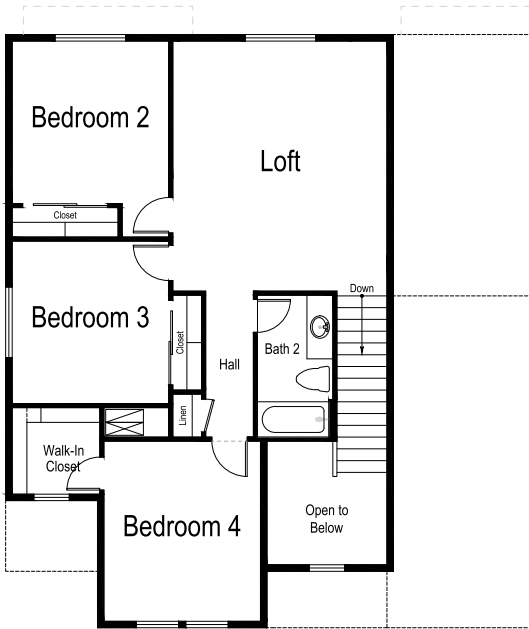
FARMHOUSE



Grand Bath Option



Main Level



Upper Level

2500 PLAN

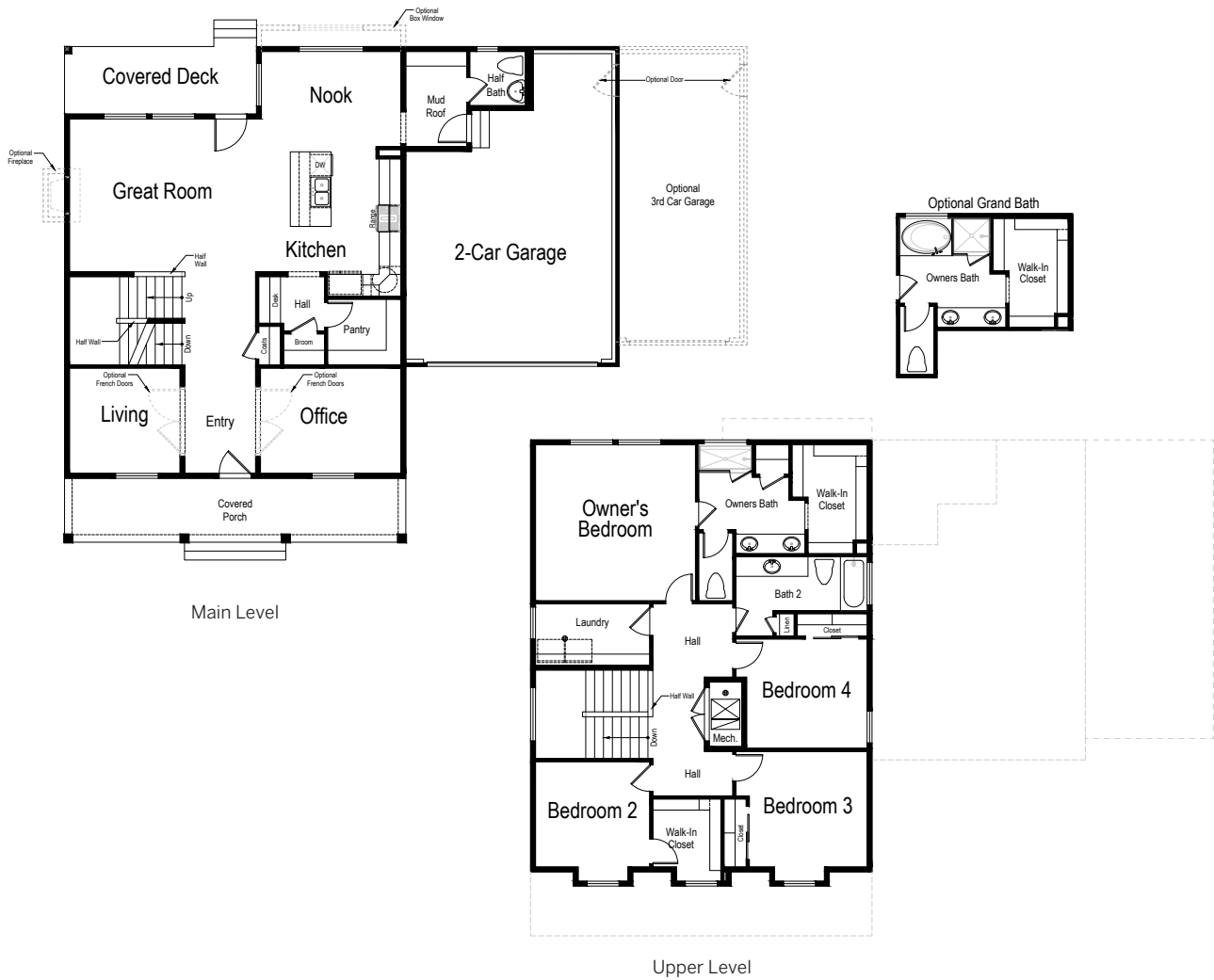
2,613 Total Finished Sq. Ft. | 3,971 Total Sq. Ft. | 4 Bedrooms | 2.5 Bathrooms



FARMHOUSE



TRADITIONAL



3000 PLAN

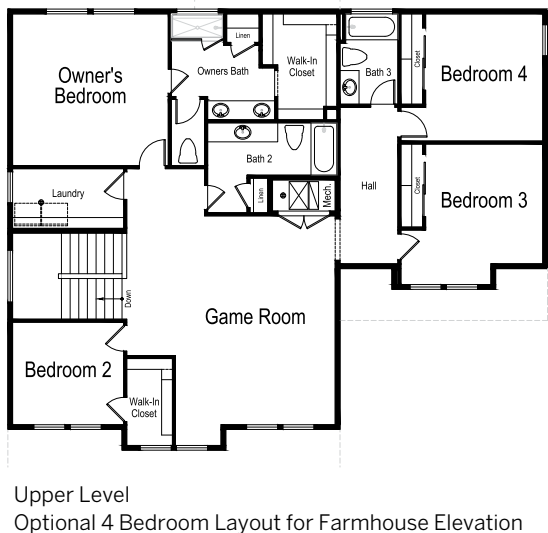
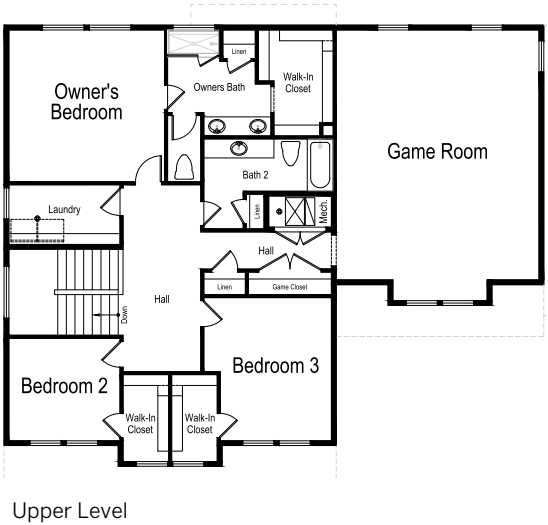
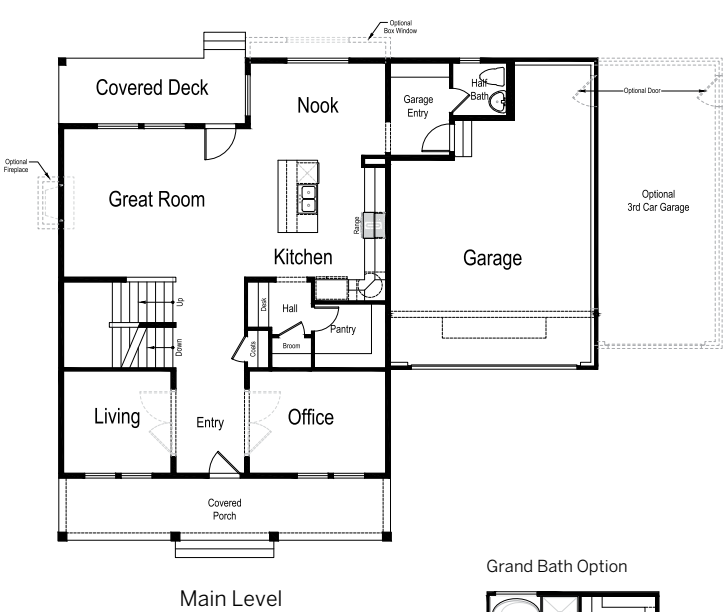
3,133 Total Finished Sq. Ft. | 4,491 Total Sq. Ft. | 3 Bedrooms | 2.5 Bathrooms



FARMHOUSE



TRADITIONAL









IVORY GARDENS

Beautifully designed main-level living with spacious floor plans.

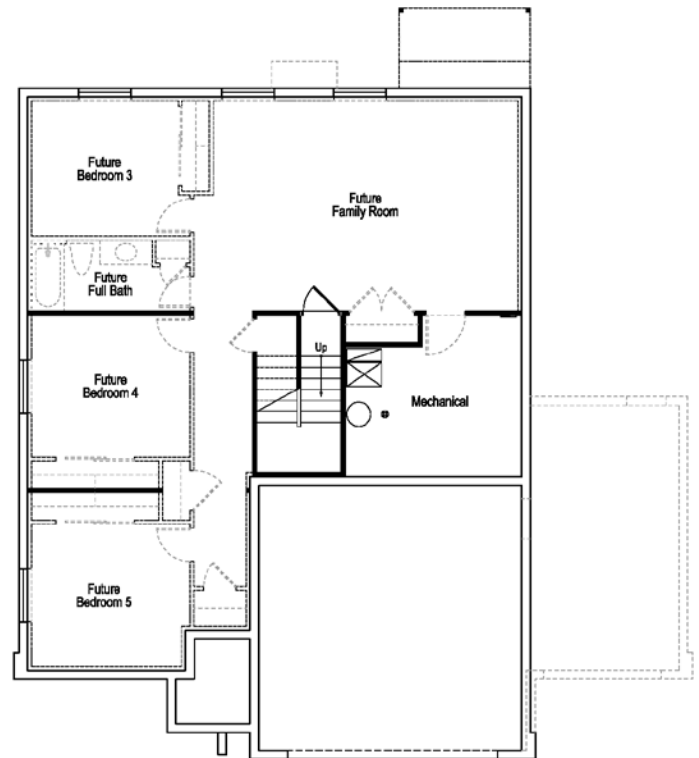
HOME PLANS

PLAN NAME	TOTAL FINISHED SQUARE FOOTAGE	TOTAL SQUARE FOOTAGE	BEDROOMS (FINISHED)	BATHROOMS (FINISHED)	WIDTH	DEPTH
Parleys	1,431	2,834	2	2	39' 0"	50' 5"
Olympus	1,482	3,020	2	2	40' 0"	50' 9"
Cottonwood	1,692	3,327	3	2	48' 0"	48' 11"
Kimball Creek	1,877	3,426	1	1 1/2	49' 0"	52' 0"
Hobble Creek	1,821	3,611	2	2 1/2	45' 0"	53' 9"
Kenney Creek	2,325	3,616	3	2 1/2	42' 3"	46' 0"
Big Cottonwood	2,083	3,702	2	2	49' 0"	51' 5"
Midas Creek	2,771	4,305	3	2 1/2	49' 0"	53' 5"





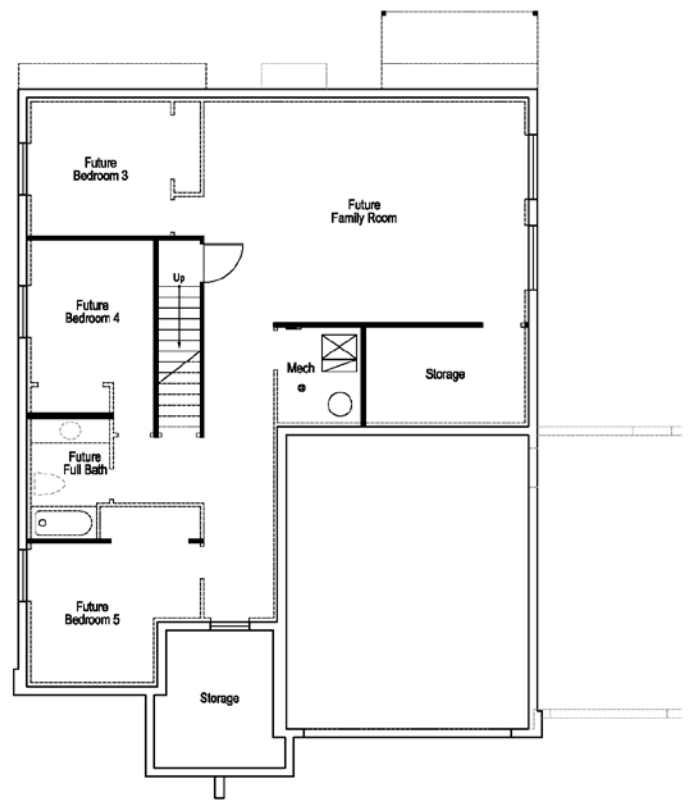
Main Level



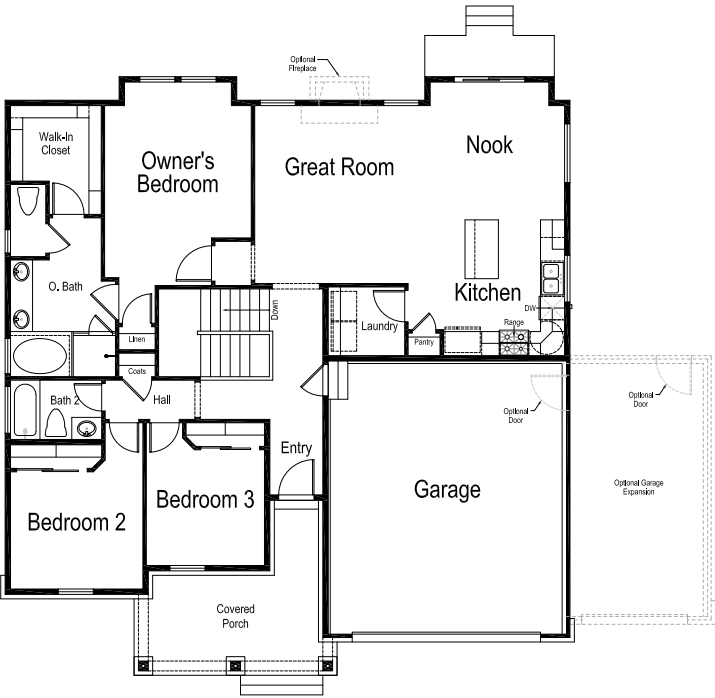
Lower Level



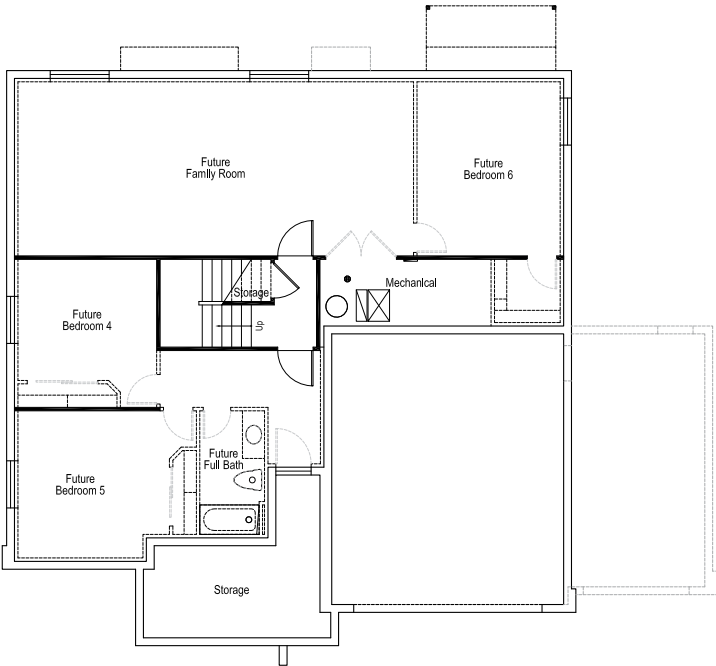
Main Level



Lower Level



Main Level



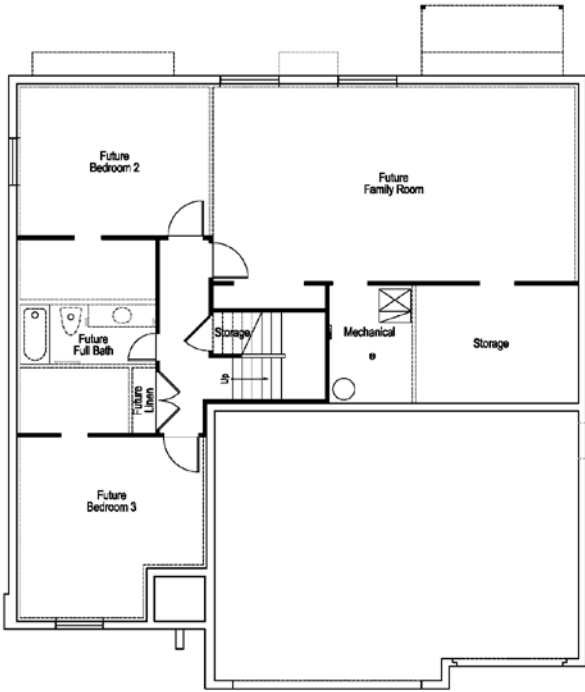
Lower Level

KIMBALL CREEK

1,877 Total Finished Sq. Ft. | 3,426 Total Sq. Ft. | 1 Bedrooms | 1 1/2 Bathrooms



Main Level



Lower Level

HOBBLE CREEK

1,821 Total Finished Sq. Ft. | 3,611 Total Sq. Ft. | 2 Bedrooms | 2 1/2 Bathrooms



Main Level



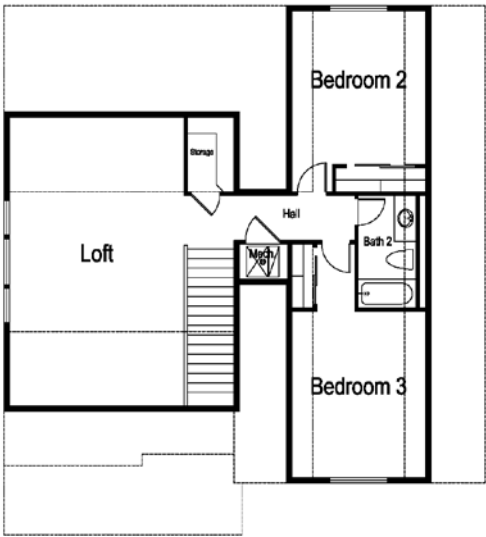
Lower Level

KENNEY CREEK

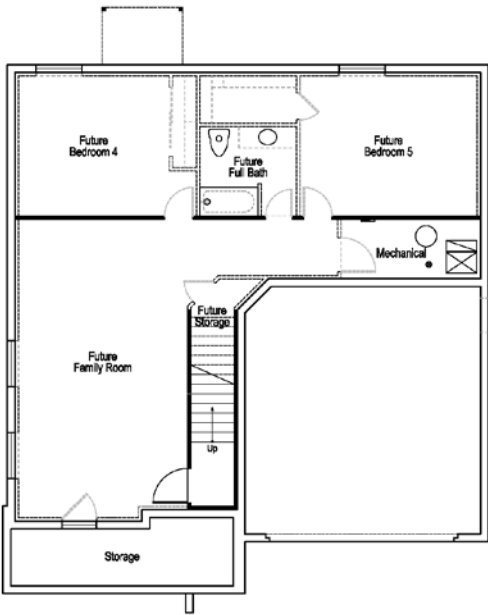
2,325 Total Finished Sq. Ft. | 3,616 Total Sq. Ft. | 3 Bedrooms | 2 1/2 Bathrooms



Main Level



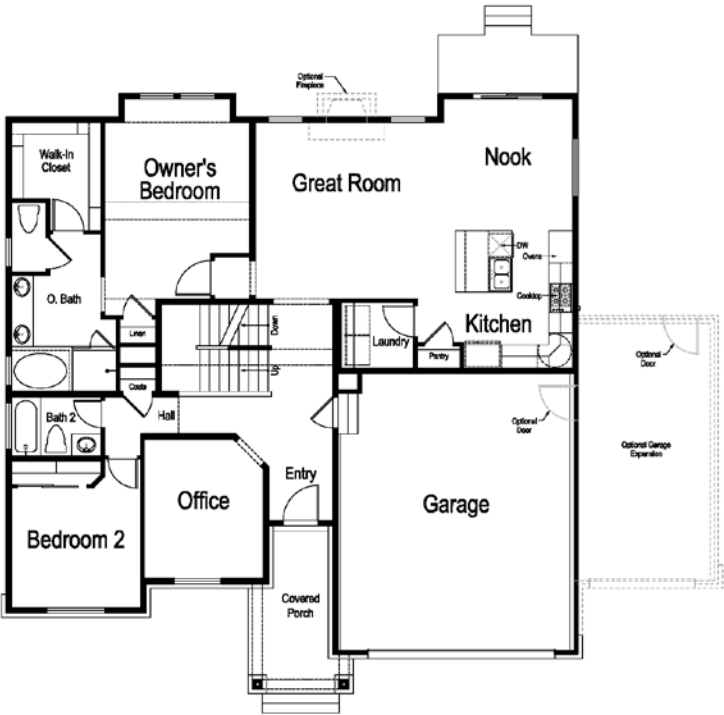
Upper Level



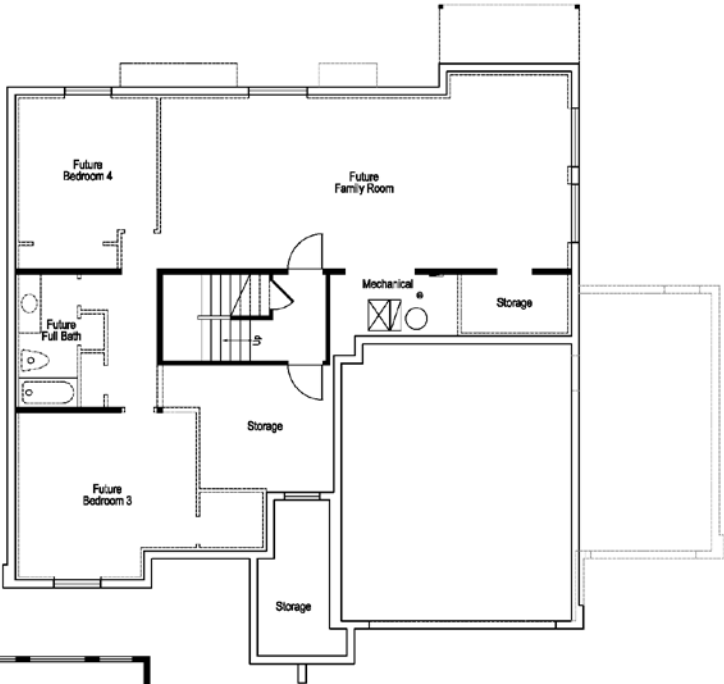
Lower Level

BIG COTTONWOOD

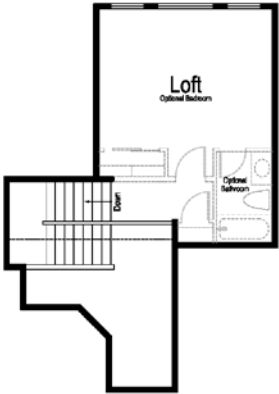
2,083 Total Finished Sq. Ft. | 3,702 Total Sq. Ft. | 2 Bedrooms | 2 Bathrooms



Main Level



Lower Level



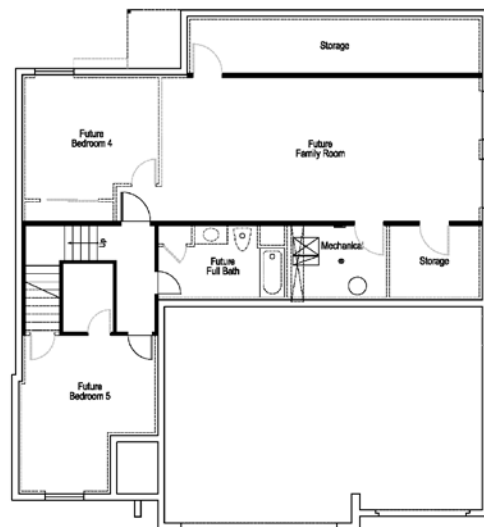
Loft

MIDAS CREEK

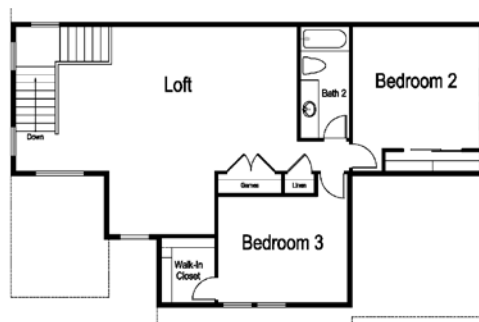
2,771 Total Finished Sq. Ft. | 4,305 Total Sq. Ft. | 3 Bedrooms | 2 1/2 Bathrooms



Main Level



Lower Level



Upper Level



IvoryHomes.com

