



IVORYHOMES

Utah's Number One Homebuilder®



Creating Possibilities For You

Signature Catalogue 2024



CABRIOLET AT PARK CITY HEIGHTS

Creating Possibilities For You

Let Utah's Number One Homebuilder® help you find the perfect home design. This Signature Catalogue features 42 of our most up-scale home plans, which can be built in 36 locations (see our listing of locations on pages 38 & 39).

At Ivory, we build homes for every stage of life: townhomes and cottages for first-time buyers, a collection of move-up designs, garden homes for those 55+, and luxury and vacation homes. Let us help you find your new home.

Scan this QR to connect with our website and check out over 200 new home plans.





Possibilities Start Here.

You have the opportunity to visit Ivory Homes design centers to select features which include a wide variety of colors, materials, and products. We invite you to meet with Ivory Homes' design specialists and architectural team to personalize your new home. Ivory Homes is proud to partner with Lennox, Moen, Kohler, GE, Mannington, Kwikset, Anderson Tuftex, Emser Tile, Crossville Studios, and Arizona Tile.

Included features in every Signature home:

2024 SIGNATURE PLATINUM PACKAGE

Quality Construction

- 10-year Limited Home Warranty
- Ivory quality control inspection program
- In-house customer service team to assist after closing

Interior

- 42" tall upper kitchen cabinets with hardware included
- Premium stainless steel appliance package
- Luxury laminate flooring in entry, kitchen, and nook
- Select tile flooring in laundry and baths
- Can light package in every kitchen, great room, and owner's bedroom
- High quality stain resistant carpet
- Stylish selection of quartz countertops with undermount sinks
- Quartz or tile tub and shower surrounds in owner's and hall baths (select colors)
- Textured drywall finish with rounded corners
- Satin nickel plumbing fixtures, door, and bath hardware
- Painted maple or full metal railing in select styles at stairs (per plan)
- Selection of baseboards, door casings, and door styles
- Space-saver closet shelving with dual hanging rods
- Garden tub in owner's bath
- Elongated toilets
- Premium lighting packages
- Internet/Wi-Fi ready home with data (CAT 6) and TV (RG6) jacks in select locations (per plan)
- USB outlet in kitchen
- Smart Home ready (see pg.35 for details)
- Two-tone paint

Exterior

- 30-year architectural roof shingles
- Fiberglass entry door
- Iron railing at front porch (per plan)
- Composite decking at rear exit (with vinyl railing where required)
- Automatic garage door opener with two remote controls

Energy Efficient

- Energy Star certification
- Dual fuel HVAC system with 96% efficient furnace and heat pump
- High efficiency heat pump/air conditioner (Up to 20 SEER)
- 2x6 exterior walls with energy-conserving R-23 wall insulation and R-38 ceiling insulation
- High performance Low-E vinyl windows
- EV outlet in garage (30 amp)
- Direct-vent energy-efficient natural gas water heater
- LED light bulbs throughout
- Smart Thermostat



Two-Story Possibilities

PLAN NAME		TOTAL FINISHED SQ. FT.	TOTAL UNFINISHED SQ. FT.	TOTAL SQ. FT.	WIDTH	DEPTH	BEDROOMS (FINISHED)	BATHROOMS (FINISHED)	NOTES (SEE RIGHT)	PAGE
Countryside (Traditional)	★	5,481	3,573	9,054	68'-0"	65'-11"	4	4 1/2	E,H	10
Yorktown (Traditional)	★	4,216	2,587	6,803	78'-0"	66'-1"	4	3 1/2	A,C,F	10
Taylor (Farmhouse)	★	4,212	2,580	6,792	56'-8"	65'-0"	4	3 1/2	A,C,F	11
McLean (Farmhouse)	★	4,041	2,533	6,574	70'-0"	65'-0"	4	3 1/2	A,C,F	11
Bella Vista (Traditional)	★	4,040	2,598	6,638	76'-0"	57'-0"	4	2 1/2	A,C,E,F	12
Garfield (Traditional)	★	4,019	2,323	6,342	63'-9"	56'-0"	4	3 1/2	C,F,H	12
New Haven (Colonial)		3,909	1,990	5,899	68'-0"	52'-0"	5	4 1/2	B,C	13
Sydney (Traditional)	★	3,681	2,069	5,750	60'-0"	62'-0"	4	3 1/2	A,C,F	13
Crescent (Farmhouse)	★	3,624	2,453	6,077	57'-0"	69'-6"	5	4	C,D	14
Charlotte (Traditional)		3,556	1,923	5,479	80'-0"	50'-0"	4	3 1/2	B,E	14
Lexington (Traditional)	★	3,315	2,300	5,615	73'-8"	62'-0"	3	3 1/2	A,C	15
Hanover (Traditional)		3,270	1,966	5,236	59'-0"	50'-0"	5	3 1/2	B,E	15
Lincoln (Farmhouse)	★	3,259	2,065	5,324	64'-5"	64'-5"	4	3 1/2	A,C,F	16
Hampton (Traditional)	★	3,106	2,133	5,239	59'-6"	53'-10"	4	2 1/2	B,E	16
Brinton (Signature)	★	3,104	2,133	5,237	65'-9"	55'-5"	3	2 1/2	A,C,F	17
San Marino (Craftsman)	★	2,846	1,991	4,837	54'-0"	58'-8"	4	2 1/2	B,F	17
Montclair (Traditional)		2,820	1,535	4,355	56'-6"	50'-8"	3	2 1/2	A,C,F	18
Mayflower (Farmhouse)		2,728	1,403	4,131	56'-0"	48'-11"	3	2 1/2	C,D,F	18
Edison (Traditional)	★	2,550	1,615	4,165	65'-0"	48'-10"	4	2 1/2	A,C	19
Clairemont (Traditional)		2,389	1,269	3,658	46'-11"	47'-2"	3	2 1/2	B,C	19
Hamilton (Traditional)	★	2,359	1,624	3,983	54'-0"	46'-5"	4	2 1/2	B	20
Washington (Farmhouse)		2,358	1,151	3,509	45'-0"	52'-0"	3	2 1/2	B,C	20
Washington (Desert Modern)		2,344	1,147	3,491	45'-0"	52'-5"	3	2 1/2	B,C	21

★ TWO-STORY WITH MAIN FLOOR OWNER'S SUITE



One-Story Possibilities

PLAN NAME	TOTAL FINISHED SQ. FT.	TOTAL UNFINISHED SQ. FT.	TOTAL SQ. FT.	WIDTH	DEPTH	BEDROOMS (FINISHED)	BATHROOMS (FINISHED)	NOTES (SEE BELOW)	PAGE
Butler (Traditional)	3,554	3,460	7,014	79'-0"	59'-6"	1	1 1/2	A,C	24
Belmont (Traditional)	3,234	3,367	6,601	68'-0"	66'-0"	4	2 1/2	B,C	24
Concord (Traditional)	3,044	3,058	6,102	72'-0"	68'-0"	2	2 1/2	D	25
Charleston (Traditional)	2,758	2,924	5,682	73'-6"	70'-0"	1	1 1/2	A,C	25
Oakmont (Traditional)	2,757	2,705	5,462	80'-5"	58'-6"	1	1 1/2	A,C,E	26
Brisbane (Traditional)	2,748	2,765	5,513	71'-0"	69'-6"	2	2 1/2	A,C	26
Sorrento (Traditional)	2,740	2,809	5,549	73'-6"	61'-2"	2	2 1/2	A,C,E	27
Ontario (Farmhouse)	2,649	2,659	5,308	66'-0"	64'-0"	3	2 1/2	C,D,E	27
Creighton (Farmhouse)	2,640	2,285	4,925	70'-0"	46'-5"	3	2 1/2	A,G	28
Alexandria (Farmhouse)	2,443	2,648	5,091	70'-0"	65'-0"	1	1 1/2	A,C	28
Raleigh (Traditional)	2,330	2,213	4,543	53'-0"	61'-6"	2	2 1/2	B,C	29
Murano (Traditional)	2,259	2,159	4,418	49'-0"	60'-5"	2	2 1/2	B,C	29
Flagstaff (Farmhouse)	2,234	2,276	4,510	60'-0"	62'-5"	3	2 1/2	C,D	30
Carlisle (Prairie)	2,106	2,168	4,274	60'-0"	53'-6"	3	2 1/2	B	30
Carlisle (Traditional)	2,103	2,174	4,277	60'-0"	53'-6"	3	2 1/2	B	31
DaVinci (Traditional)	2,068	2,021	4,089	62'-0"	60'-8"	3	2 1/2	A,C	31
Monterey (Traditional)	2,019	1,987	4,006	55'-0"	52'-0"	3	2 1/2	B	32
Tivoli (Traditional)	1,977	2,038	4,015	59'-0"	50'-0"	3	2 1/2	B	32
Torino (Farmhouse)	1,905	1,841	3,746	54'-0"	49'-0"	4	2 1/2	B	33
Stonebrook (Traditional)	1,687	1,745	3,432	48'-0"	48'-0"	3	2	B	33

Notes:

A: Includes three-car garage

B: Available with optional three-car garage

C: Includes office on main level

D: Includes tandem three-car garage

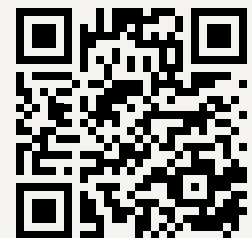
E: Includes formal dining room

F: Includes loft area upstairs

G: Includes bonus room over garage

H: Includes detached three car garage

- Not all homes are available in all subdivisions. Ask your sales consultant for details.
- All renderings of exteriors and all floor plans are artist conceptions and may vary from the actual home as built.
- All options, designs, and dimensions are subject to change and revision without notice.



Scan QR Code To See
Ivory's Home Designs

Two-Story Possibilities



SYDNEY AT DRYCREEK HIGHLANDS

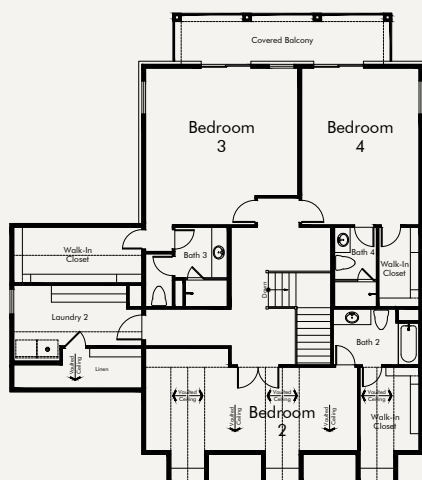
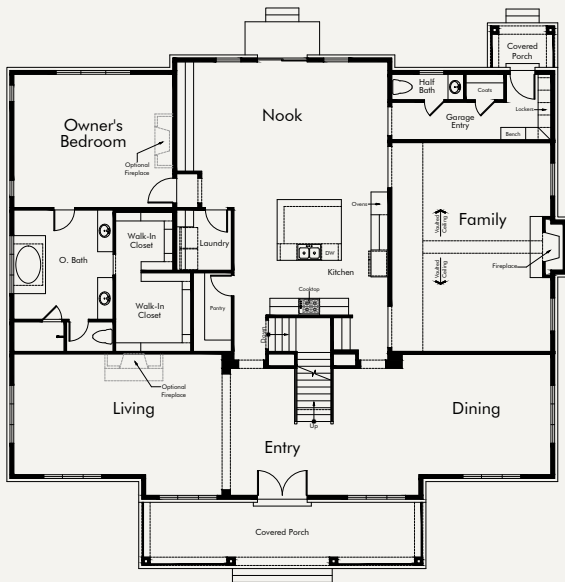




Countryside (Traditional)

Total finished sq. ft.: 5,481
 Total unfinished sq. ft.: 3,573 Total sq. ft.: 9,054
 Bedrooms: 4 Bathrooms: 4 1/2
 Width: 68'-0" Depth: 65'-11"

- ★ TWO-STORY WITH MAIN FLOOR OWNER'S SUITE
- * Includes detached three car garage



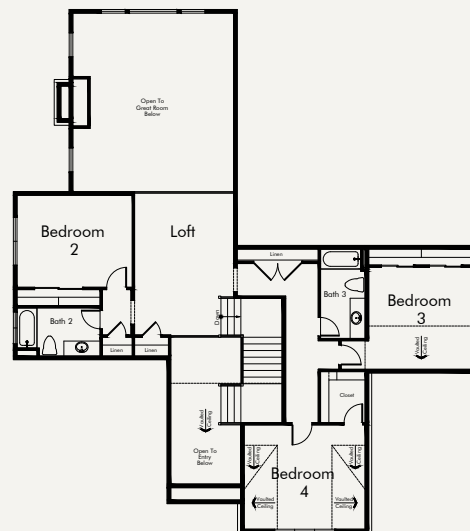
Customize This Plan



Yorktown (Traditional)

Total finished sq. ft.: 4,216
 Total unfinished sq. ft.: 2,587 Total sq. ft.: 6,803
 Bedrooms: 4 Bathrooms: 3 1/2
 Width: 78'-0" Depth: 66'-1"

- ★ TWO-STORY WITH MAIN FLOOR OWNER'S SUITE



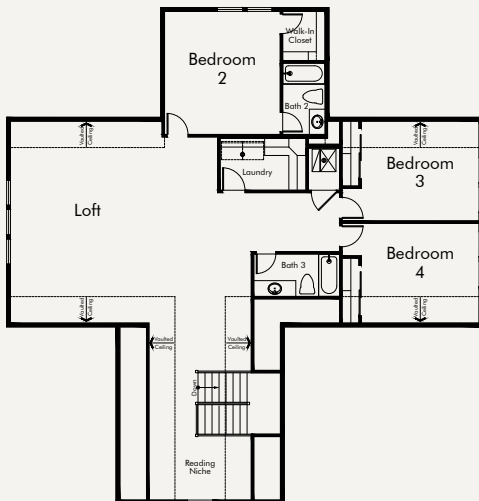
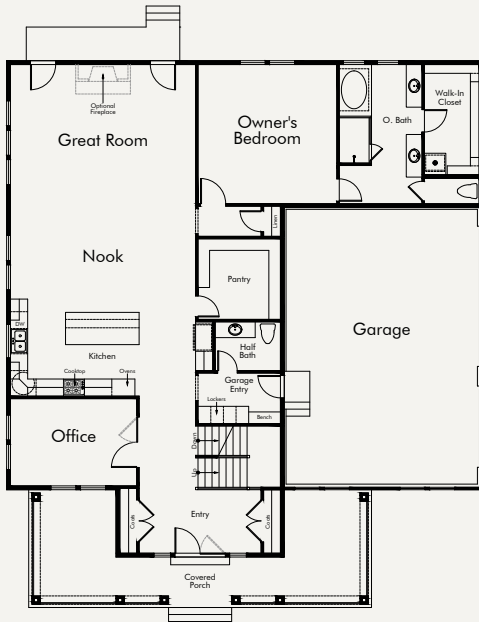
Customize This Plan



Taylor (Farmhouse)

Total finished sq. ft.: 4,212
 Total unfinished sq. ft.: 2,580 Total sq. ft.: 6,792
 Bedrooms: 4 Bathrooms: 3 1/2
 Width: 56'-8" Depth: 65'-0"

★ TWO-STORY WITH MAIN FLOOR OWNER'S SUITE



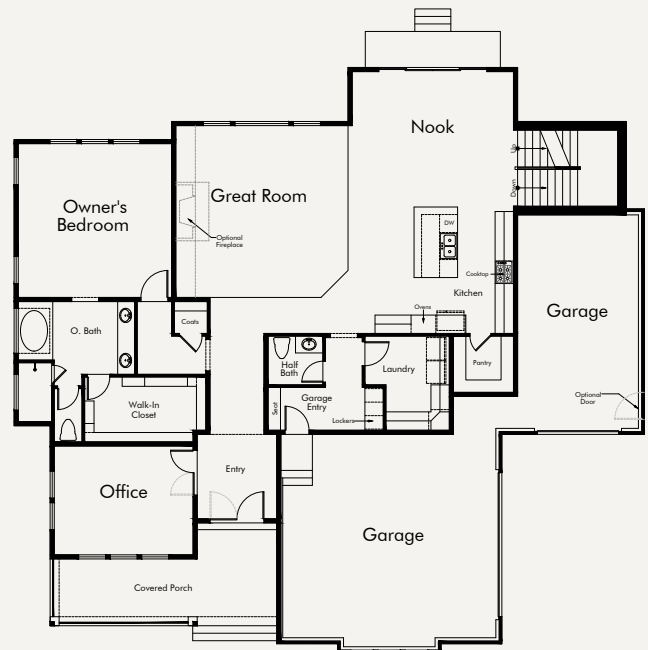
Customize This Plan



McLean (Farmhouse)

Total finished sq. ft.: 4,041
 Total unfinished sq. ft.: 2,533 Total sq. ft.: 6,574
 Bedrooms: 4 Bathrooms: 3 1/2
 Width: 70'-0" Depth: 65'-0"

★ TWO-STORY WITH MAIN FLOOR OWNER'S SUITE



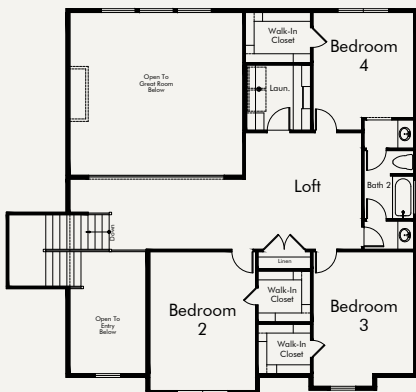
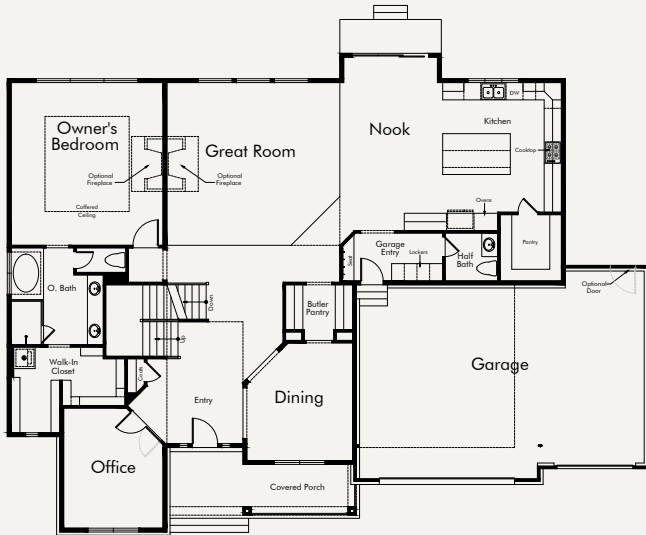
Customize This Plan



Bella Vista (Traditional)

Total finished sq. ft.: 4,040
 Total unfinished sq. ft.: 2,598 Total sq. ft.: 6,638
 Bedrooms: 4 Bathrooms: 2 1/2
 Width: 76'-0" Depth: 57'-0"

★ TWO-STORY WITH MAIN FLOOR OWNER'S SUITE



Customize This Plan

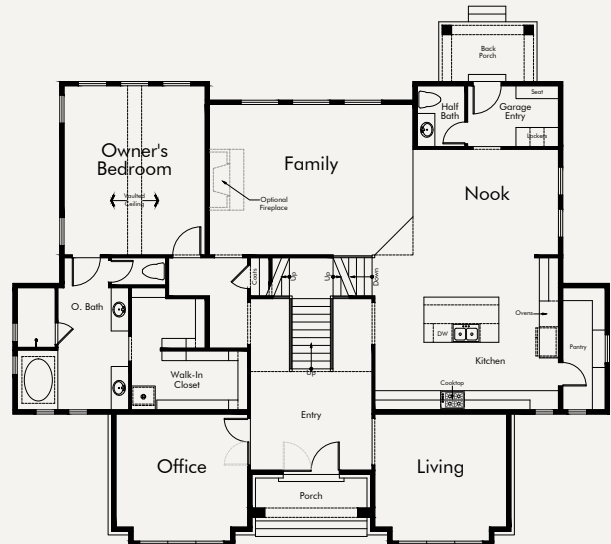


Garfield (Traditional)

Total finished sq. ft.: 4,019
 Total unfinished sq. ft.: 2,323 Total sq. ft.: 6,342
 Bedrooms: 4 Bathrooms: 3 1/2
 Width: 63'-9" Depth: 56'-0"

★ TWO-STORY WITH MAIN FLOOR OWNER'S SUITE

* Includes detached three car garage

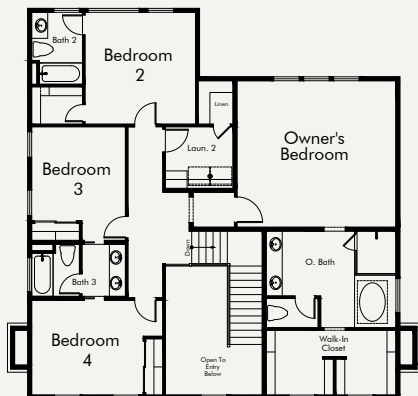
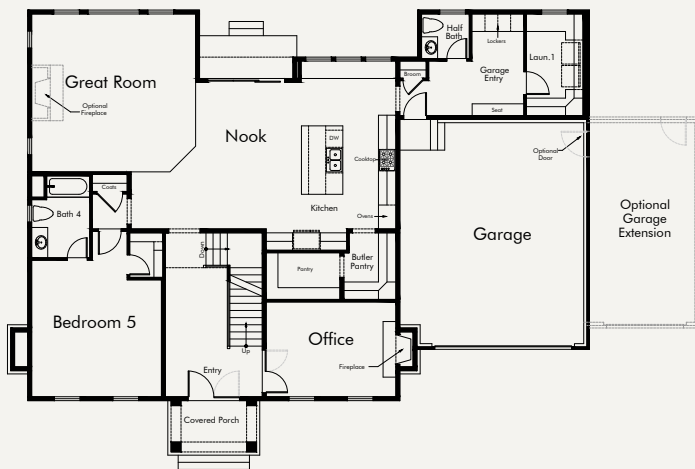


Customize This Plan



New Haven (Colonial)

Total finished sq. ft.: 3,909
 Total unfinished sq. ft.: 1,990 Total sq. ft.: 5,899
 Bedrooms: 5 Bathrooms: 4 1/2
 Width: 68'-0" Depth: 52'-0"

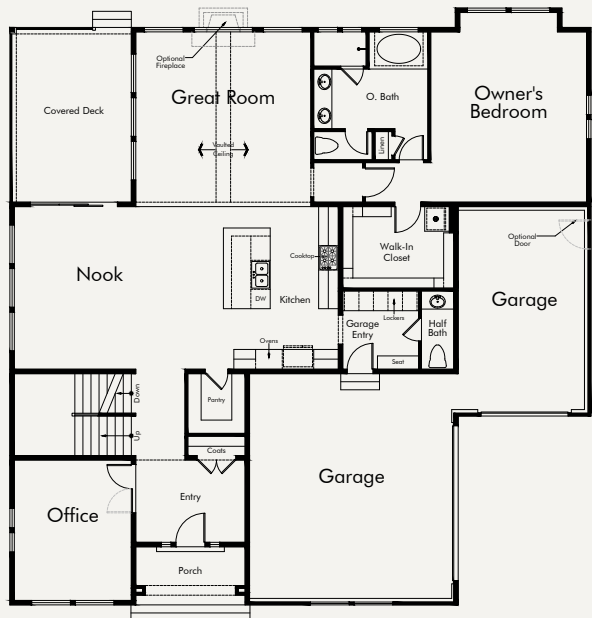


Customize This Plan



Sydney (Traditional)

Total finished sq. ft.: 3,681
 Total unfinished sq. ft.: 2,069 Total sq. ft.: 5,750
 Bedrooms: 4 Bathrooms: 3 1/2
 Width: 60'-0" Depth: 62'-0"



Customize This Plan

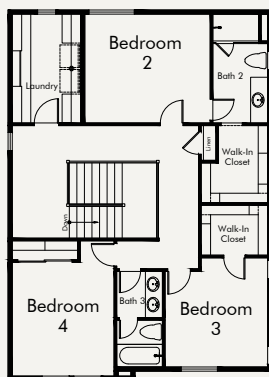
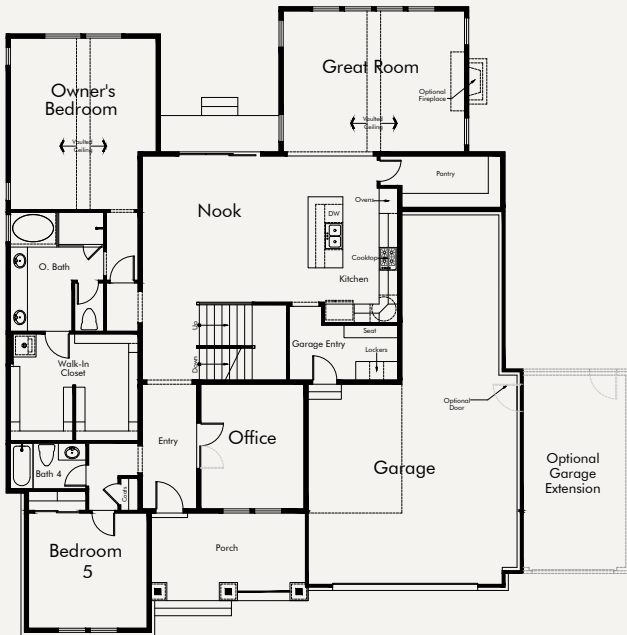
★ TWO-STORY WITH MAIN FLOOR OWNER'S SUITE



Crescent (Farmhouse)

Total finished sq. ft.: 3,624
 Total unfinished sq. ft.: 2,453 Total sq. ft.: 6,077
 Bedrooms: 5 Bathrooms: 4
 Width: 57'-0" Depth: 69'-6"

★ TWO-STORY WITH MAIN FLOOR OWNER'S SUITE

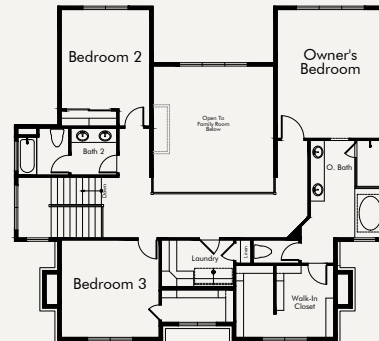
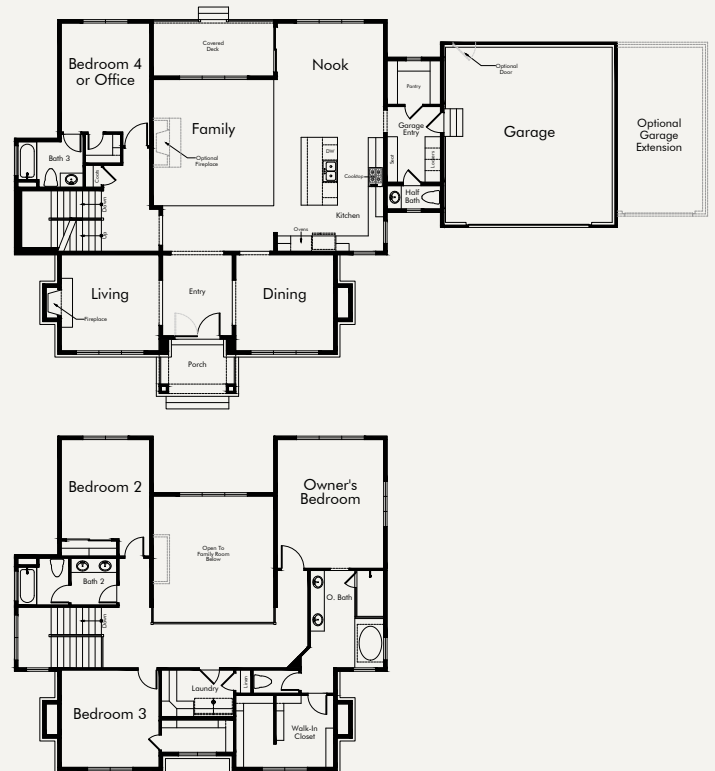


Customize This Plan



Charlotte (Traditional)

Total finished sq. ft.: 3,556
 Total unfinished sq. ft.: 1,923 Total sq. ft.: 5,479
 Bedrooms: 4 Bathrooms: 3 1/2
 Width: 80'-0" Depth: 50'-0"



Customize This Plan



Lexington (Traditional)

Total finished sq. ft.: 3,315
 Total unfinished sq. ft.: 2,300 Total sq. ft.: 5,615
 Bedrooms: 3 Bathrooms: 3 1/2
 Width: 73'-8" Depth: 62'-0"

★ TWO-STORY WITH MAIN FLOOR OWNER'S SUITE

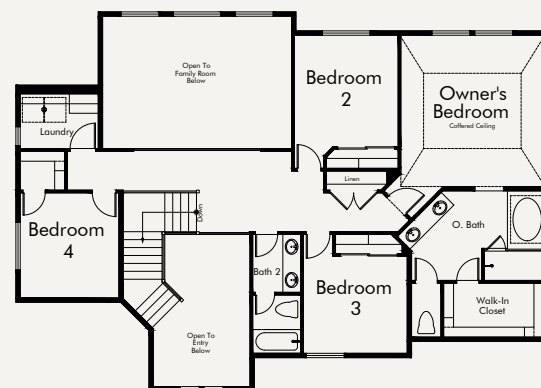
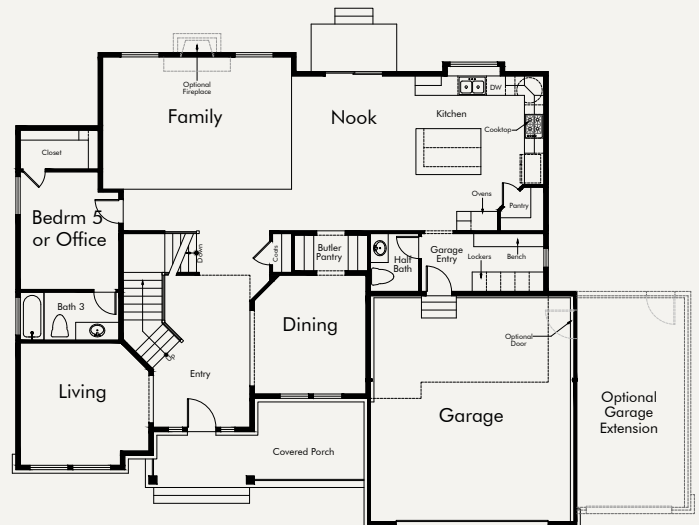


Customize This Plan



Hanover (Traditional)

Total finished sq. ft.: 3,270
 Total unfinished sq. ft.: 1,966 Total sq. ft.: 5,236
 Bedrooms: 5 Bathrooms: 3 1/2
 Width: 59'-0" Depth: 50'-0"



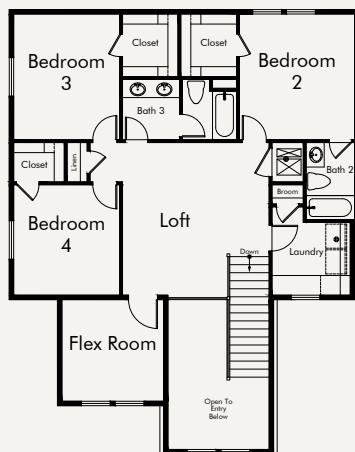
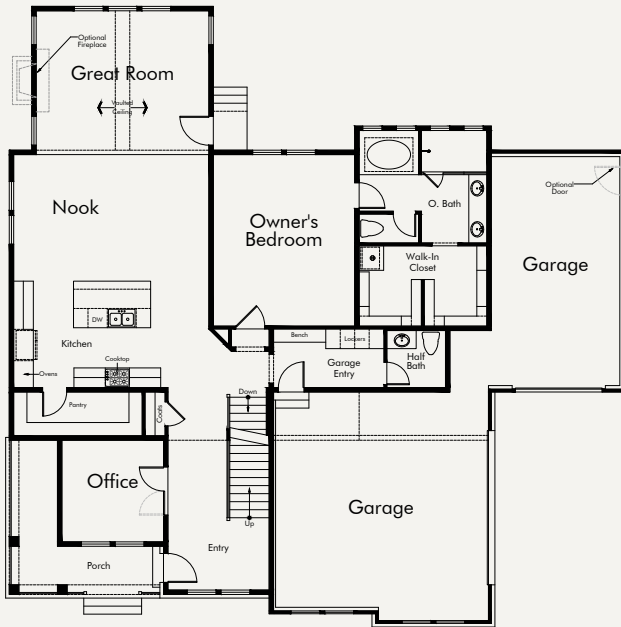
Customize This Plan



Lincoln (Farmhouse)

Total finished sq. ft.: 3,259
 Total unfinished sq. ft.: 2,065 Total sq. ft.: 5,324
 Bedrooms: 4 Bathrooms: 3 1/2
 Width: 64'-5" Depth: 64'-5"

★ TWO-STORY WITH MAIN FLOOR OWNER'S SUITE



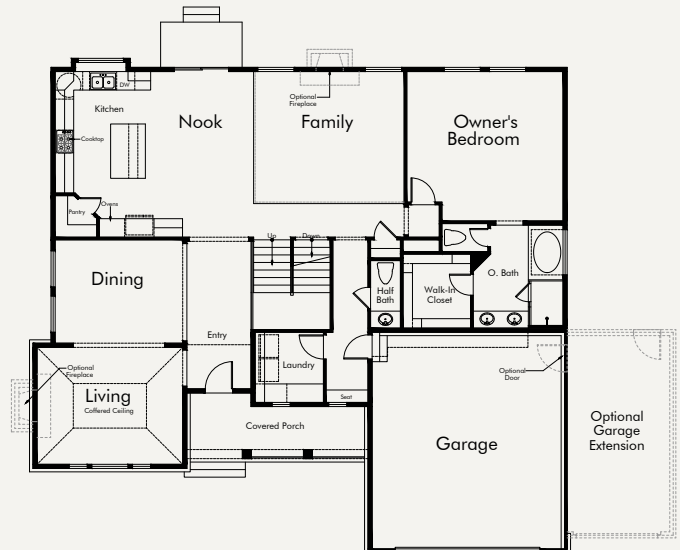
Customize This Plan



Hampton (Traditional)

Total finished sq. ft.: 3,106
 Total unfinished sq. ft.: 2,133 Total sq. ft.: 5,239
 Bedrooms: 4 Bathrooms: 2 1/2
 Width: 59'-6" Depth: 53'-10"

★ TWO-STORY WITH MAIN FLOOR OWNER'S SUITE



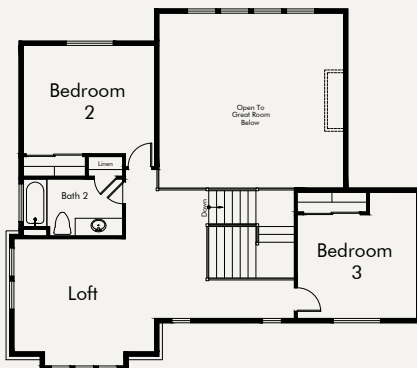
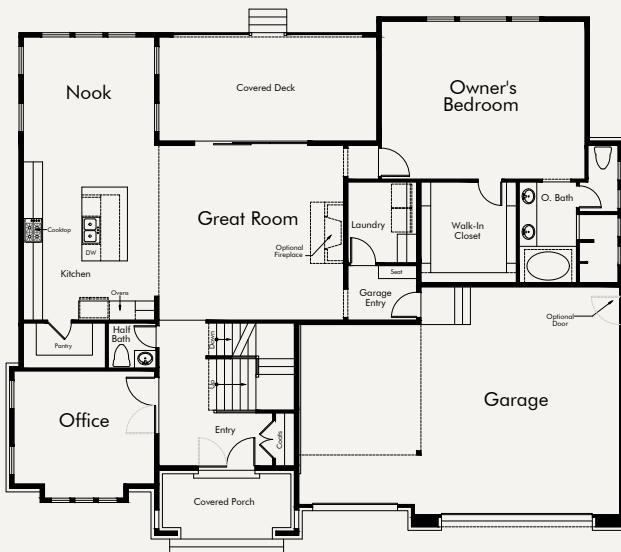
Customize This Plan



Brinton (Signature)

Total finished sq. ft.: 3,104
 Total unfinished sq. ft.: 2,133 Total sq. ft.: 5,237
 Bedrooms: 3 Bathrooms: 2 1/2
 Width: 65'-9" Depth: 55'-5"

★ TWO-STORY WITH MAIN FLOOR OWNER'S SUITE



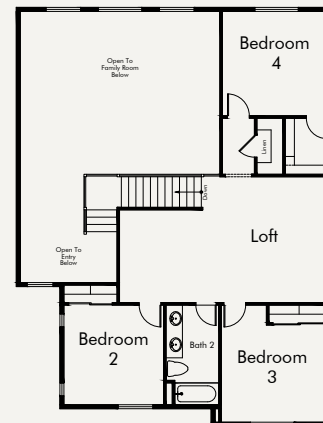
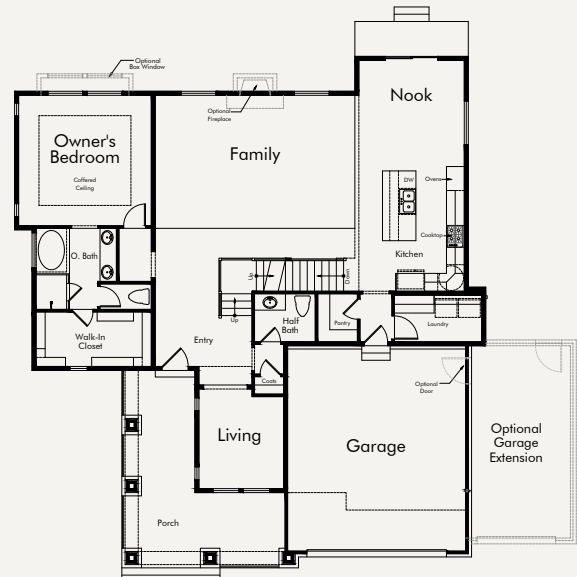
Customize This Plan



San Marino (Craftsman)

Total finished sq. ft.: 2,846
 Total unfinished sq. ft.: 1,991 Total sq. ft.: 4,837
 Bedrooms: 4 Bathrooms: 2 1/2
 Width: 54'-0" Depth: 58'-8"

★ TWO-STORY WITH MAIN FLOOR OWNER'S SUITE

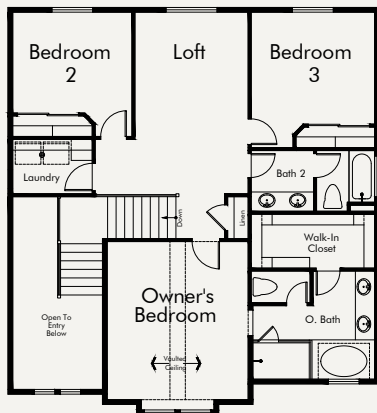
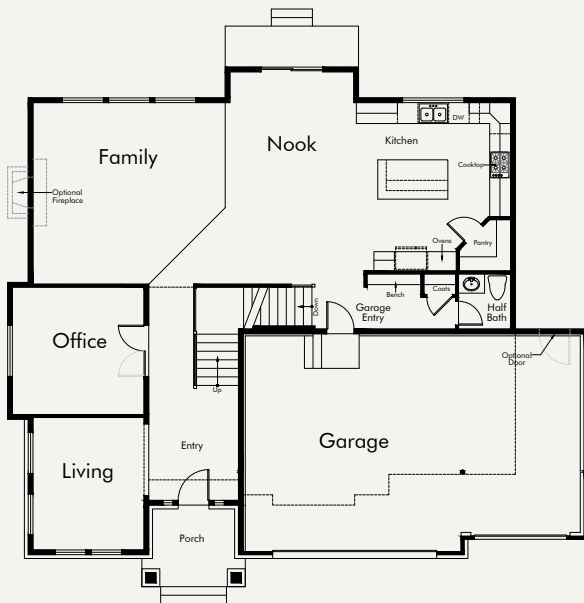


Customize This Plan



Montclair (Traditional)

Total finished sq. ft.: 2,820
 Total unfinished sq. ft.: 1,535 Total sq. ft.: 4,355
 Bedrooms: 3 Bathrooms: 2 1/2
 Width: 56'-6" Depth: 50'-8"

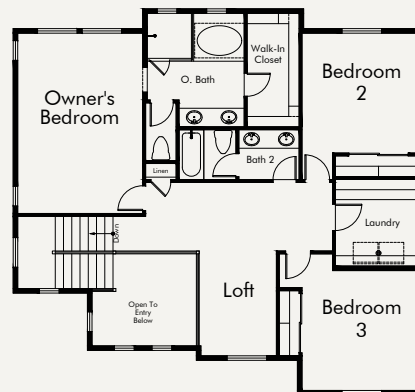
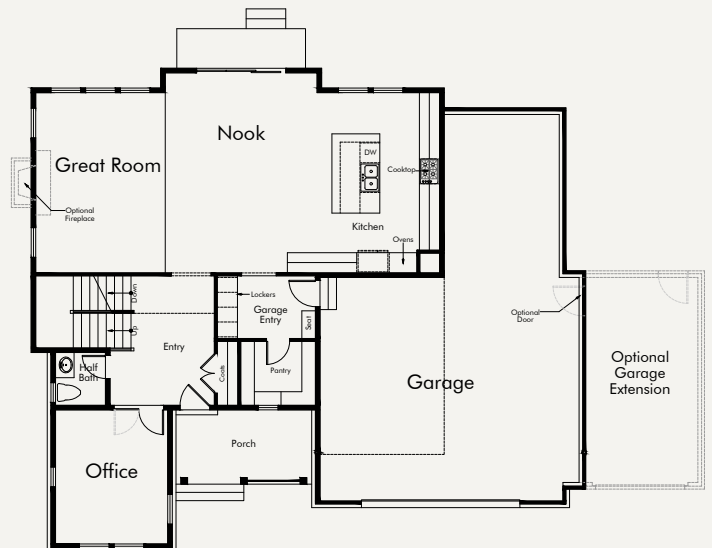


Customize This Plan



Mayflower (Farmhouse)

Total finished sq. ft.: 2,728
 Total unfinished sq. ft.: 1,403 Total sq. ft.: 4,131
 Bedrooms: 3 Bathrooms: 2 1/2
 Width: 56'-0" Depth: 48'-11"



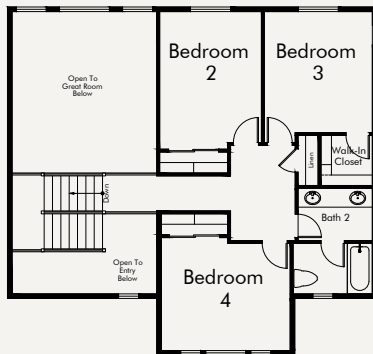
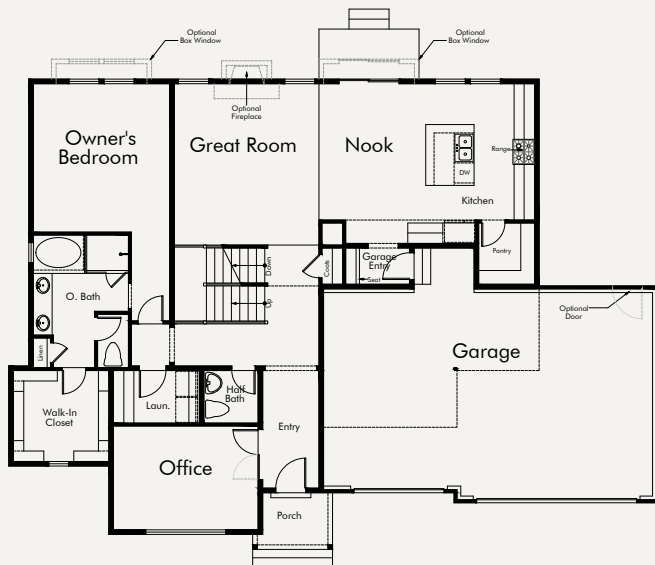
Customize This Plan



Edison (Traditional)

Total finished sq. ft.: 2,550
 Total unfinished sq. ft.: 1,615 Total sq. ft.: 4,165
 Bedrooms: 4 Bathrooms: 2 1/2
 Width: 65'-0" Depth: 48'-10"

★ TWO-STORY WITH MAIN FLOOR OWNER'S SUITE

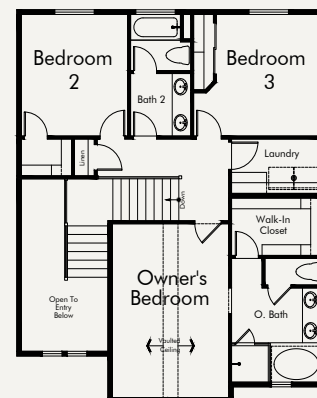
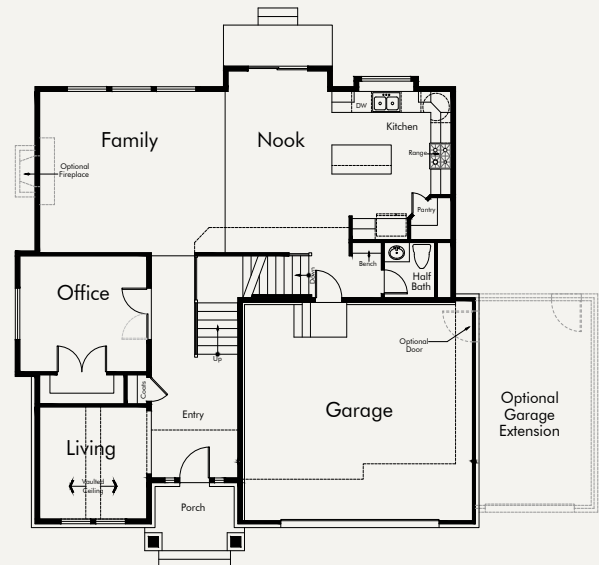


Customize This Plan



Clairemont (Traditional)

Total finished sq. ft.: 2,389
 Total unfinished sq. ft.: 1,269 Total sq. ft.: 3,658
 Bedrooms: 3 Bathrooms: 2 1/2
 Width: 46'-11" Depth: 47'-2"



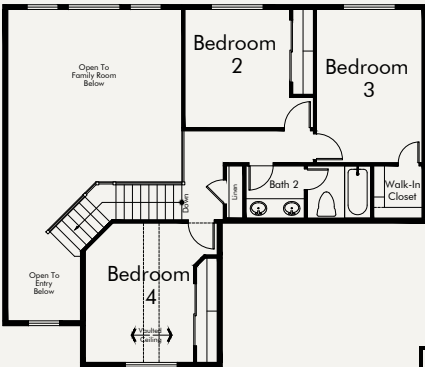
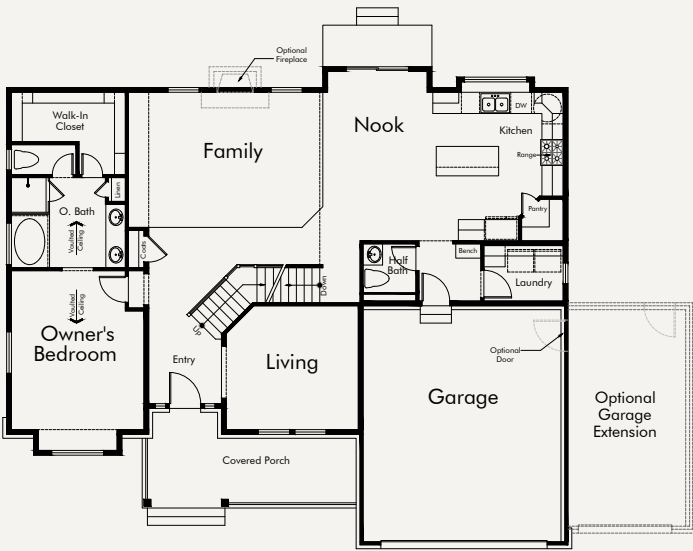
Customize This Plan



Hamilton (Traditional)

Total finished sq. ft.: 2,359
 Total unfinished sq. ft.: 1,624 Total sq. ft.: 3,983
 Bedrooms: 4 Bathrooms: 2 1/2
 Width: 54'-0" Depth: 46'-5"

★ TWO-STORY WITH MAIN FLOOR OWNER'S SUITE

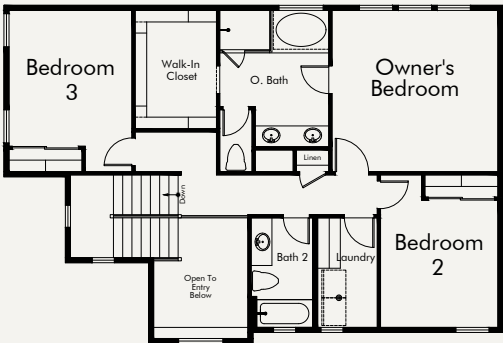
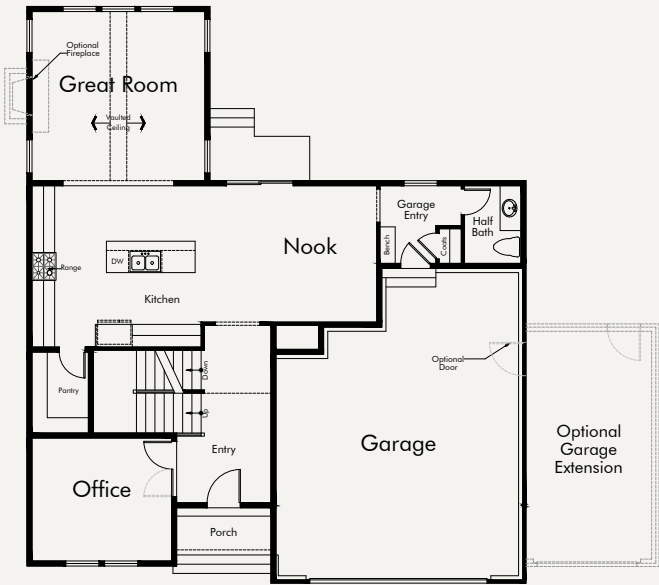


Customize This Plan



Washington (Farmhouse)

Total finished sq. ft.: 2,358
 Total unfinished sq. ft.: 1,151 Total sq. ft.: 3,509
 Bedrooms: 3 Bathrooms: 2 1/2
 Width: 45'-0" Depth: 52'-0"

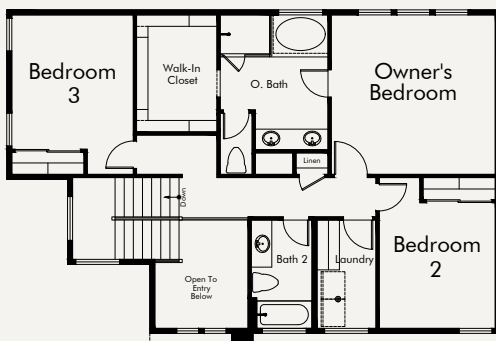
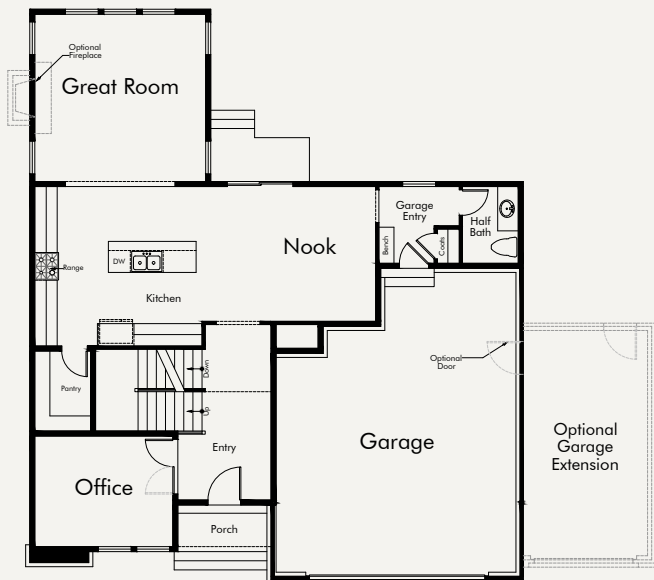


Customize This Plan



Washington (Desert Modern)

Total finished sq. ft.: 2,344
 Total unfinished sq. ft.: 1,147 Total sq. ft.: 3,491
 Bedrooms: 3 Bathrooms: 2 1/2
 Width: 45'-0" Depth: 52'-5"



Customize This Plan



WASHINGTON FARMHOUSE
 AT ANDERSON FARMS



One-Story Possibilities

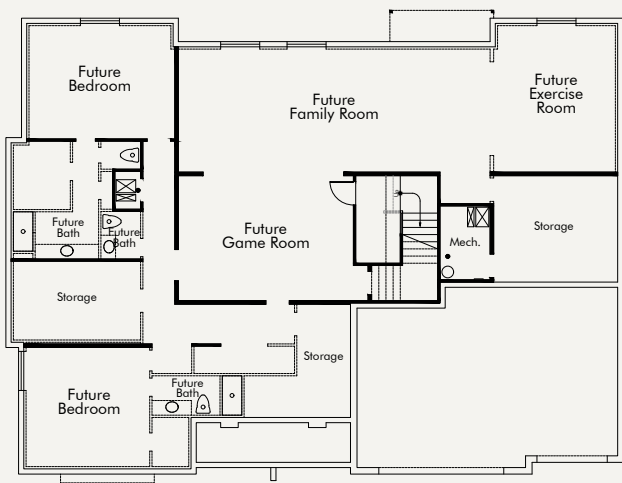
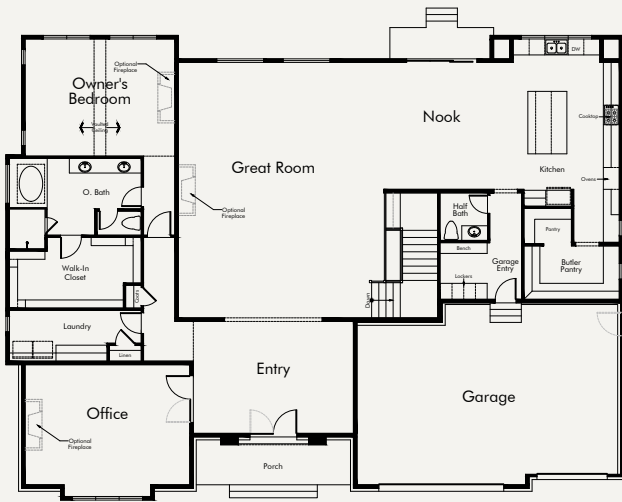
RALEIGH AT BIG WILLOW





Butler (Traditional)

Total finished sq. ft.: 3,554
 Total unfinished sq. ft.: 3,460 Total sq. ft.: 7,014
 Bedrooms: 1 Bathrooms: 1 1/2
 Width: 79'-0" Depth: 59'-6"

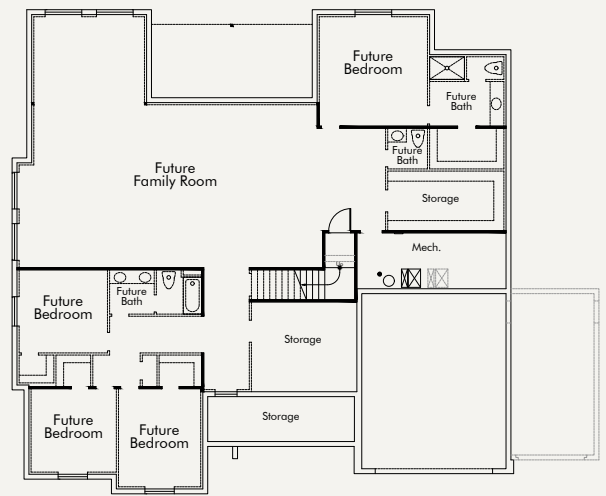
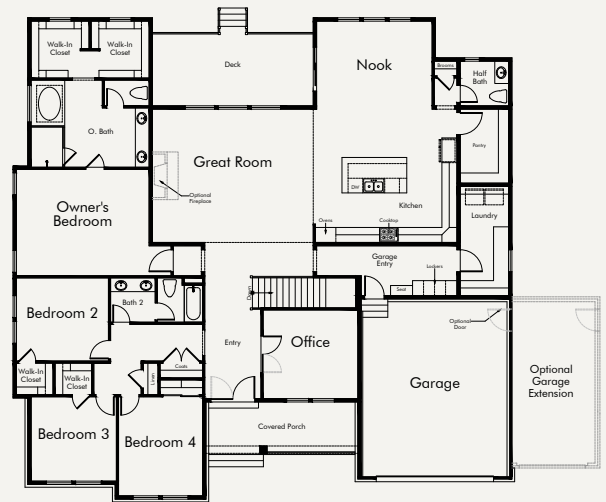


Customize This Plan



Belmont (Traditional)

Total finished sq. ft.: 3,234
 Total unfinished sq. ft.: 3,367 Total sq. ft.: 6,601
 Bedrooms: 4 Bathrooms: 2 1/2
 Width: 68'-0" Depth: 66'-0"

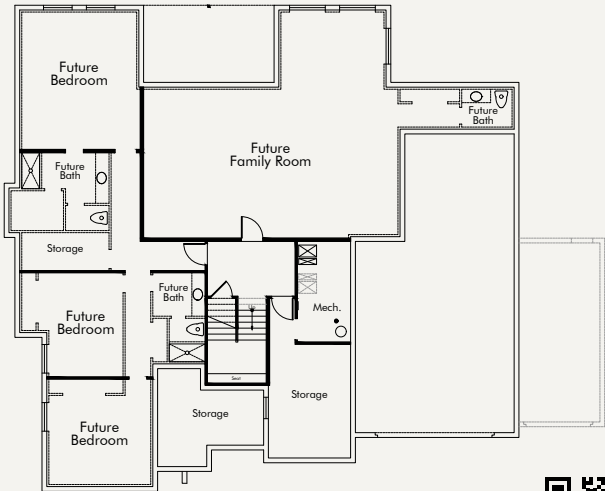
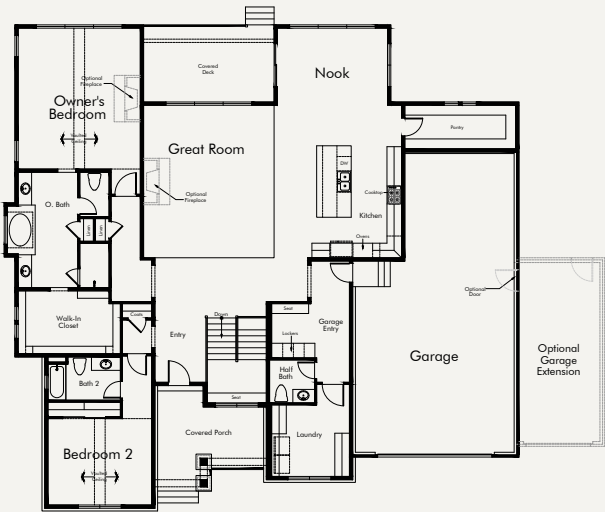


Customize This Plan



Concord (Traditional)

Total finished sq. ft.: 3,044
 Total unfinished sq. ft.: 3,058 Total sq. ft.: 6,102
 Bedrooms: 2 Bathrooms: 2 1/2
 Width: 72'-0" Depth: 68'-0"

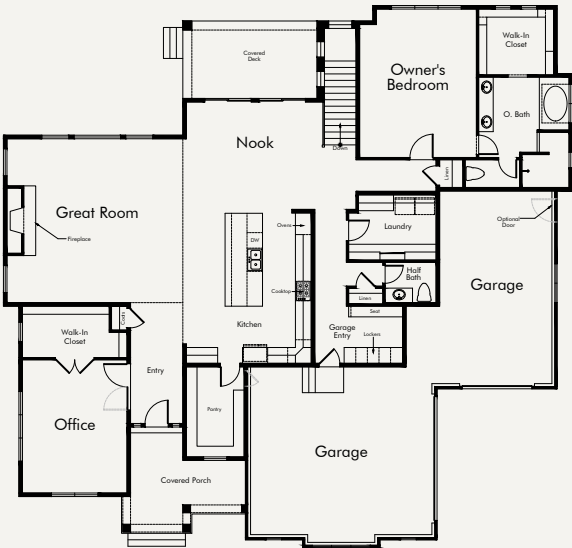


Customize This Plan



Charleston (Traditional)

Total finished sq. ft.: 2,758
 Total unfinished sq. ft.: 2,924 Total sq. ft.: 5,682
 Bedrooms: 1 Bathrooms: 1 1/2
 Width: 73'-6" Depth: 70'-0"

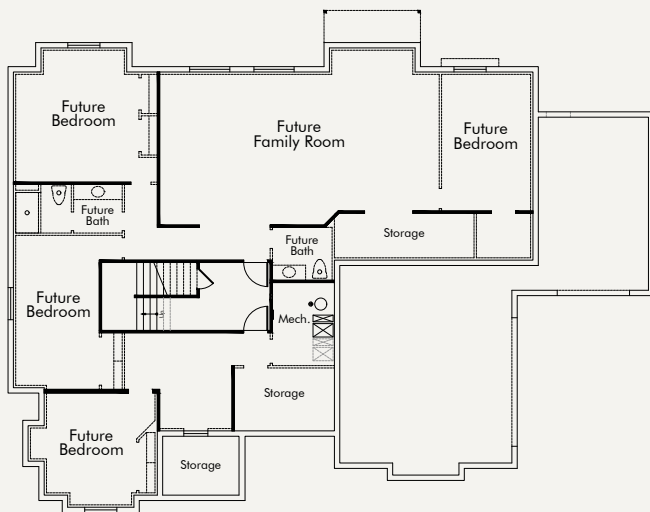
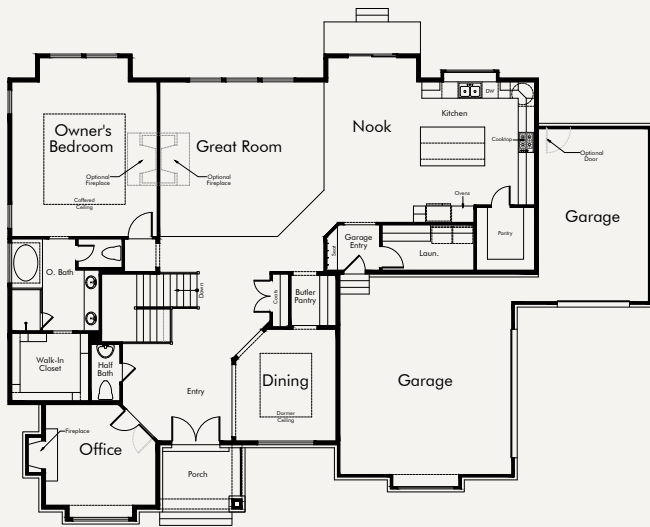


Customize This Plan



Oakmont (Traditional)

Total finished sq. ft.: 2,757
 Total unfinished sq. ft.: 2,705 Total sq. ft.: 5,462
 Bedrooms: 1 Bathrooms: 1 1/2
 Width: 80'-5" Depth: 58'-6"

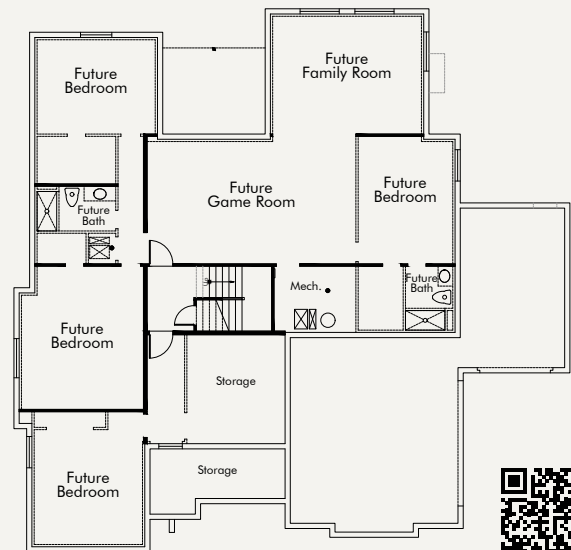


Customize This Plan



Brisbane (Traditional)

Total finished sq. ft.: 2,748
 Total unfinished sq. ft.: 2,765 Total sq. ft.: 5,513
 Bedrooms: 2 Bathrooms: 2 1/2
 Width: 71'-0" Depth: 69'-6"

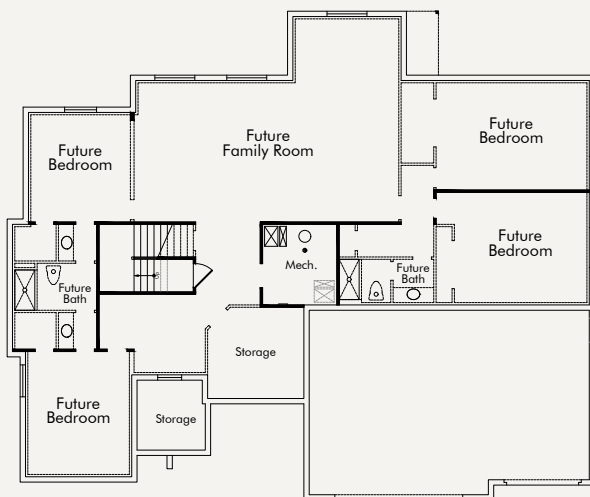
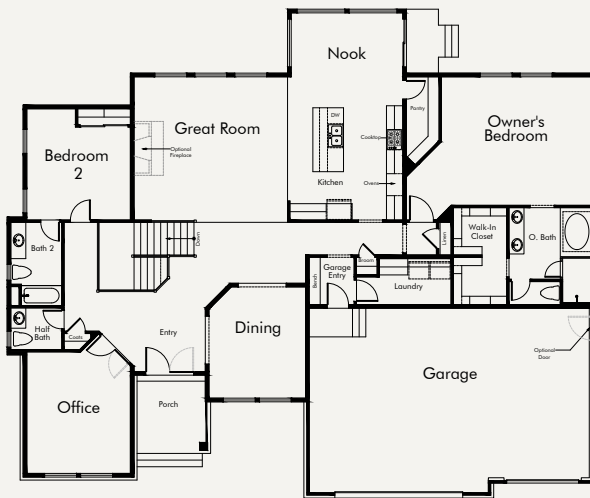


Customize This Plan



Sorrento (Traditional)

Total finished sq. ft.: 2,740
 Total unfinished sq. ft.: 2,809 Total sq. ft.: 5,549
 Bedrooms: 2 Bathrooms: 2 1/2
 Width: 73'-6" Depth: 61'-2"

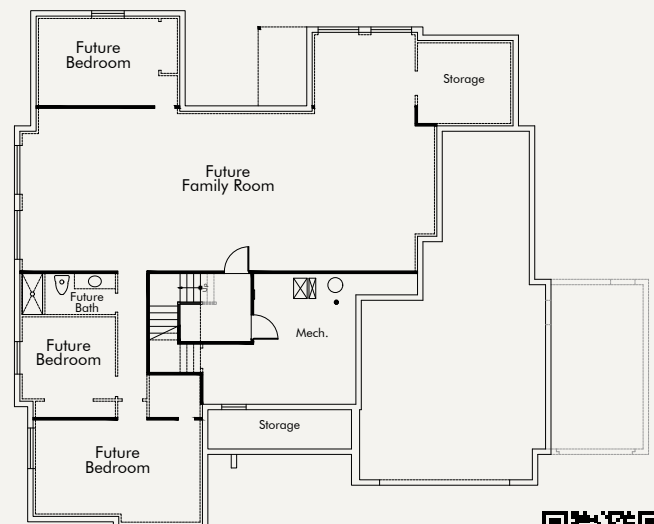
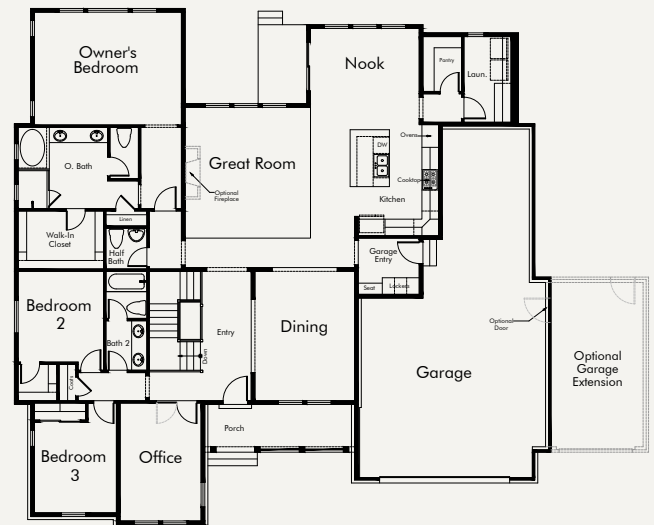


Customize This Plan



Ontario (Farmhouse)

Total finished sq. ft.: 2,649
 Total unfinished sq. ft.: 2,659 Total sq. ft.: 5,308
 Bedrooms: 3 Bathrooms: 2 1/2
 Width: 66'-0" Depth: 64'-0"

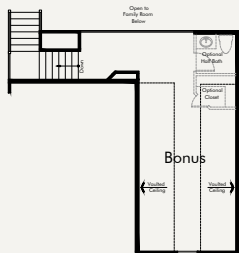
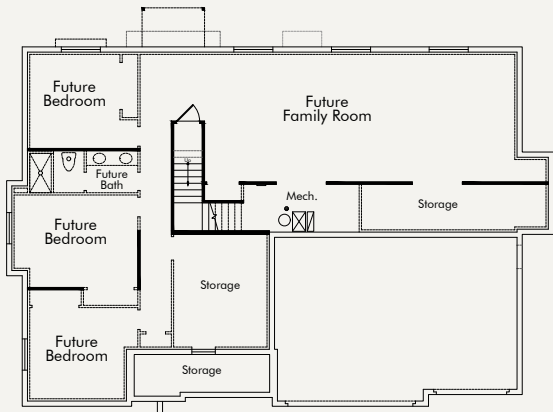
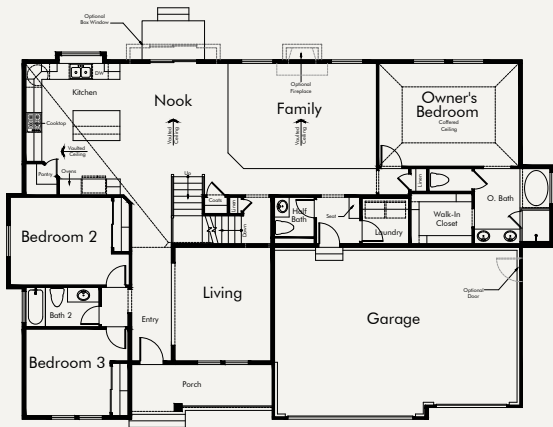


Customize This Plan



Creighton (Farmhouse)

Total finished sq. ft.: 2,640
 Total unfinished sq. ft.: 2,285 Total sq. ft.: 4,925
 Bedrooms: 3 Bathrooms: 2 1/2
 Width: 70'-0" Depth: 46'-5"

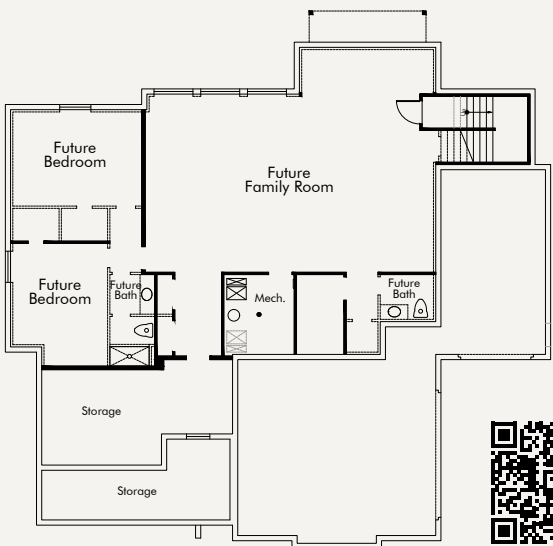


Customize This Plan



Alexandria (Farmhouse)

Total finished sq. ft.: 2,443
 Total unfinished sq. ft.: 2,648 Total sq. ft.: 5,091
 Bedrooms: 1 Bathrooms: 1 1/2
 Width: 70'-0" Depth: 65'-0"

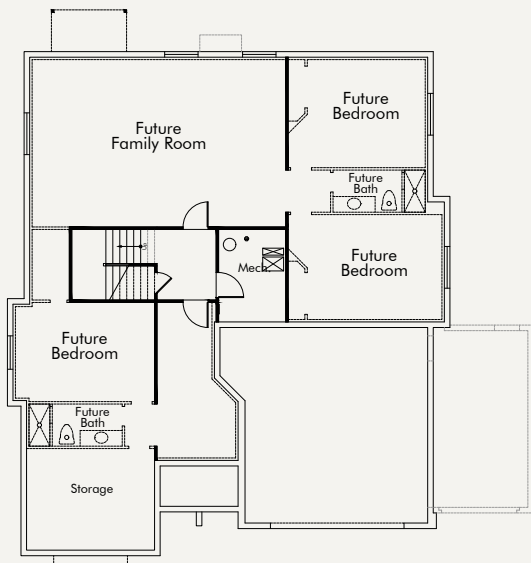
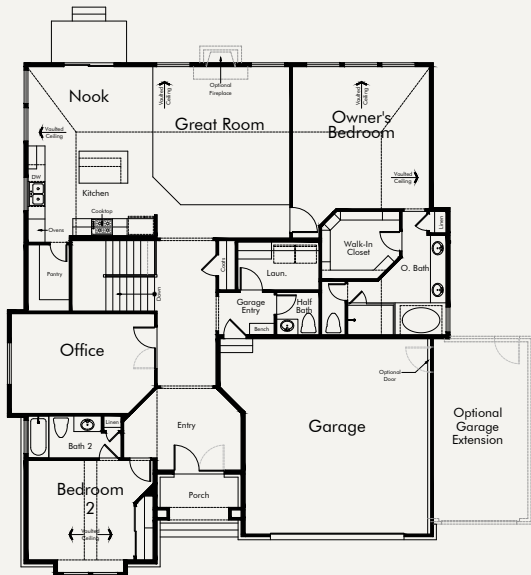


Customize This Plan



Raleigh (Traditional)

Total finished sq. ft.: 2,330
 Total unfinished sq. ft.: 2,213 Total sq. ft.: 4,543
 Bedrooms: 2 Bathrooms: 2 1/2
 Width: 53'-0" Depth: 61'-6"

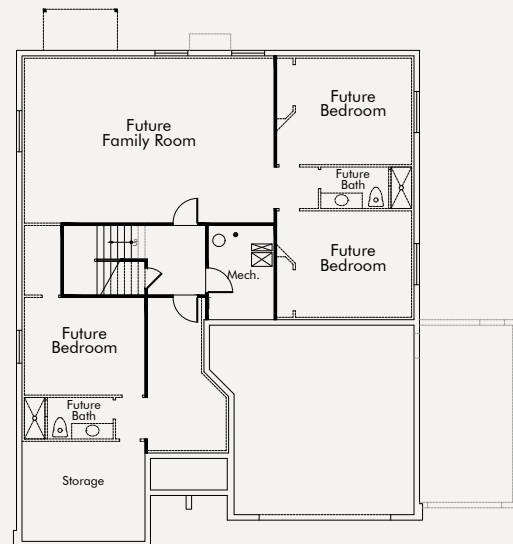
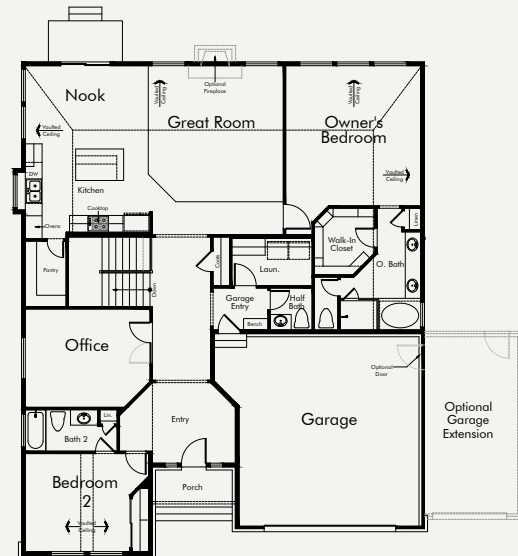


Customize This Plan



Murano (Traditional)

Total finished sq. ft.: 2,259
 Total unfinished sq. ft.: 2,159 Total sq. ft.: 4,418
 Bedrooms: 2 Bathrooms: 2 1/2
 Width: 49'-0" Depth: 60'-5"

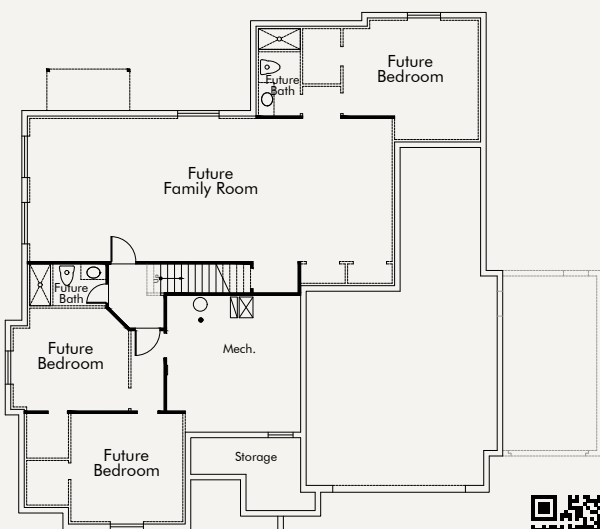
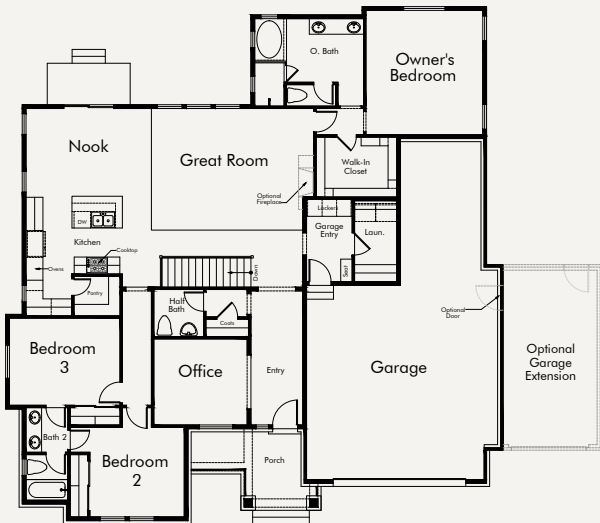


Customize This Plan



Flagstaff (Farmhouse)

Total finished sq. ft.: 2,234
 Total unfinished sq. ft.: 2,276 Total sq. ft.: 4,510
 Bedrooms: 3 Bathrooms: 2 1/2
 Width: 60'-0" Depth: 62'-5"

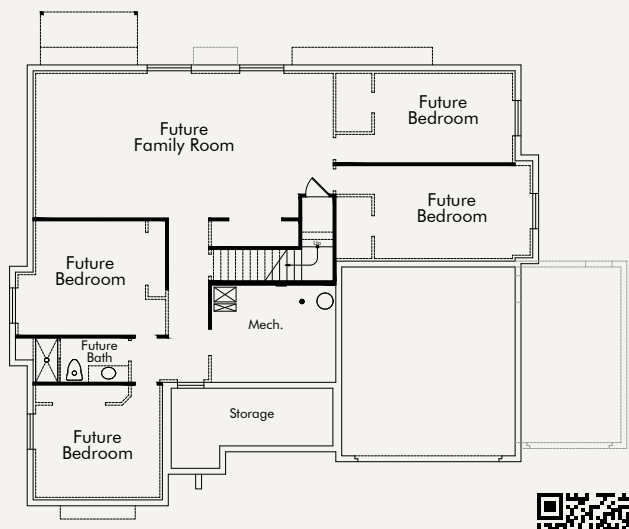
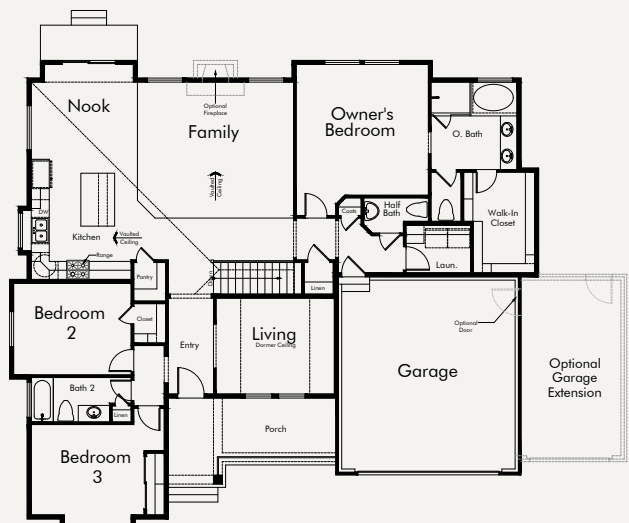


Customize This Plan



Carlisle (Prairie)

Total finished sq. ft.: 2,106
 Total unfinished sq. ft.: 2,168 Total sq. ft.: 4,274
 Bedrooms: 3 Bathrooms: 2 1/2
 Width: 60'-0" Depth: 53'-6"

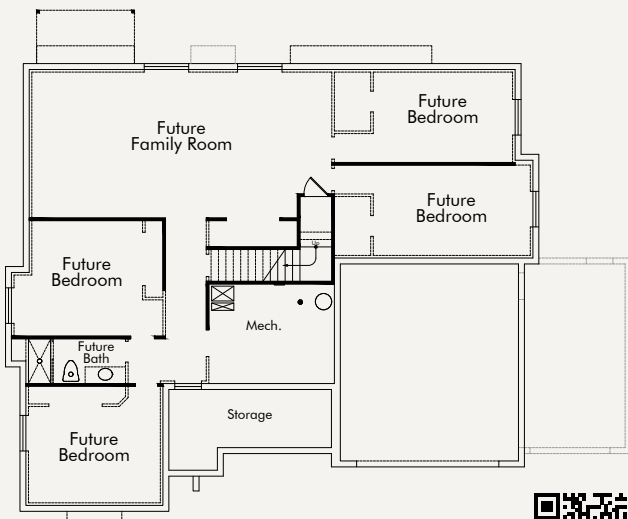
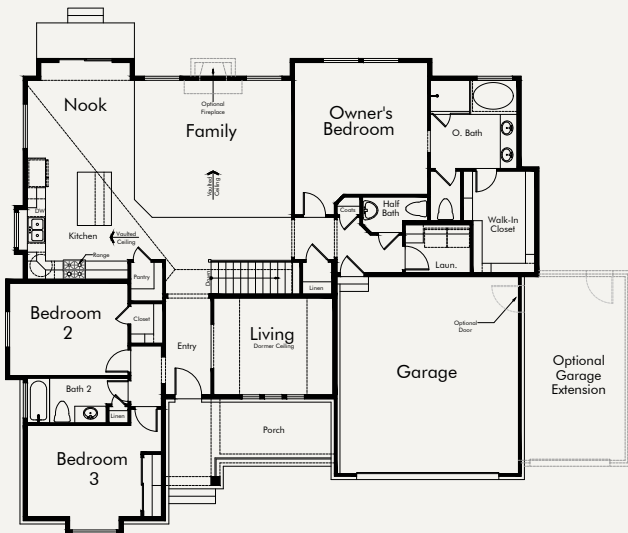


Customize This Plan



Carlisle (Traditional)

Total finished sq. ft.: 2,103
 Total unfinished sq. ft.: 2,174 Total sq. ft.: 4,277
 Bedrooms: 3 Bathrooms: 2 1/2
 Width: 60'-0" Depth: 53'-6"

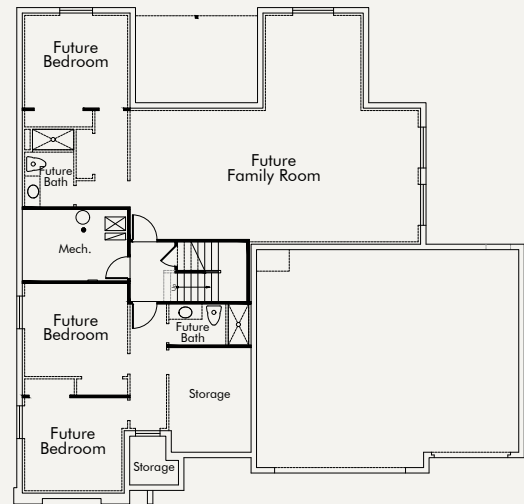
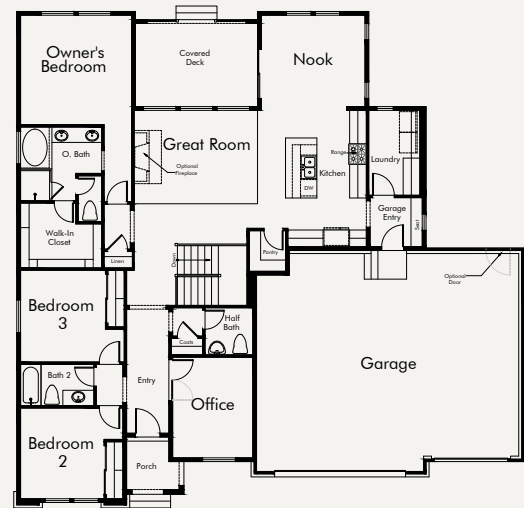


Customize This Plan



DaVinci (Traditional)

Total finished sq. ft.: 2,068
 Total unfinished sq. ft.: 2,021 Total sq. ft.: 4,089
 Bedrooms: 3 Bathrooms: 2 1/2
 Width: 62'-0" Depth: 60'-8"

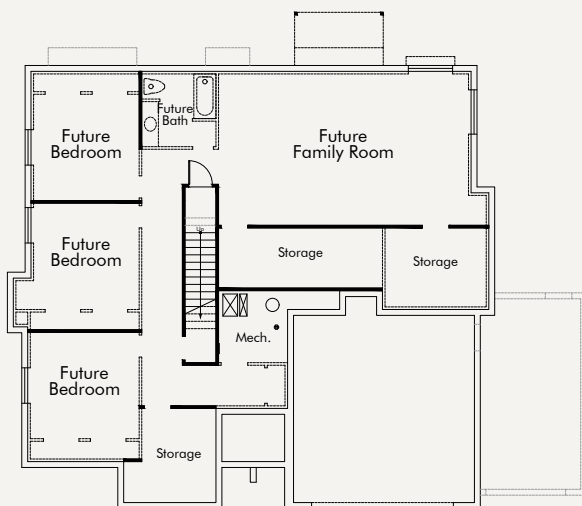
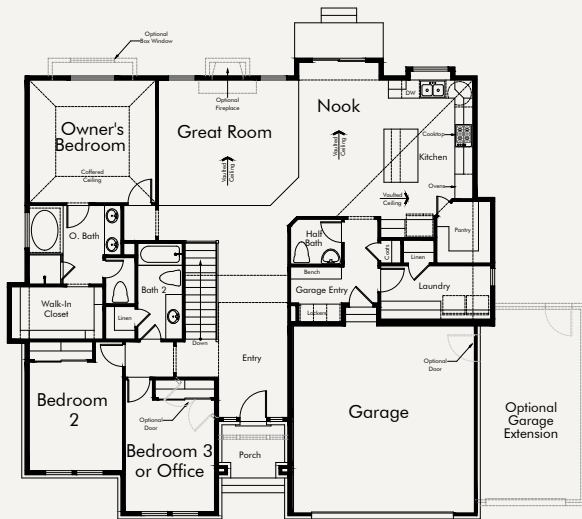


Customize This Plan



Monterey (Traditional)

Total finished sq. ft.: 2,019
 Total unfinished sq. ft.: 1,987 Total sq. ft.: 4,006
 Bedrooms: 3 Bathrooms: 2 1/2
 Width: 55'-0" Depth: 52'-0"

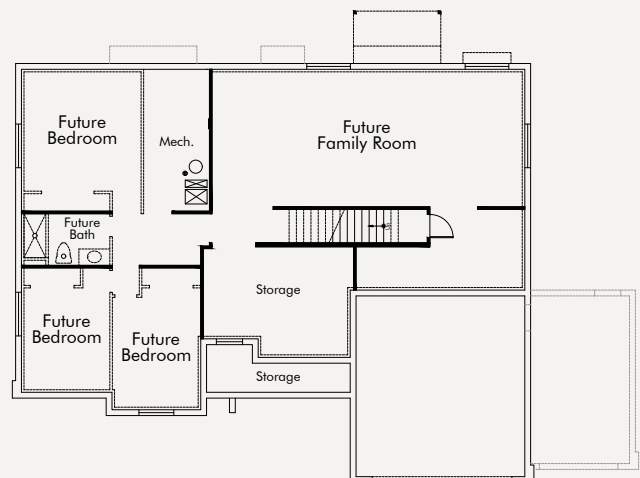
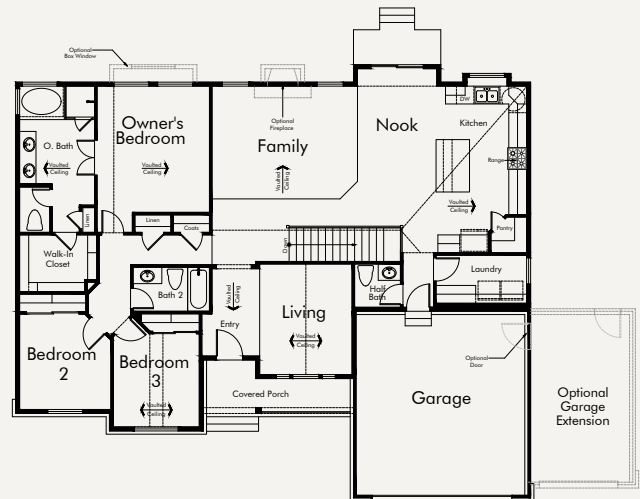


Customize This Plan



Tivoli (Traditional)

Total finished sq. ft.: 1,977
 Total unfinished sq. ft.: 2,038 Total sq. ft.: 4,015
 Bedrooms: 3 Bathrooms: 2 1/2
 Width: 59'-0" Depth: 50'-0"

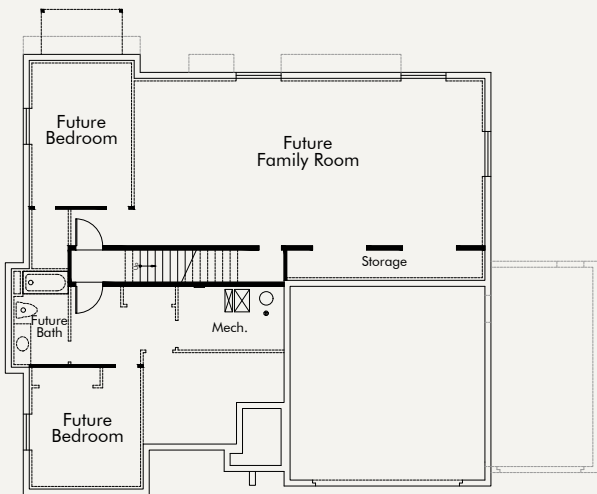
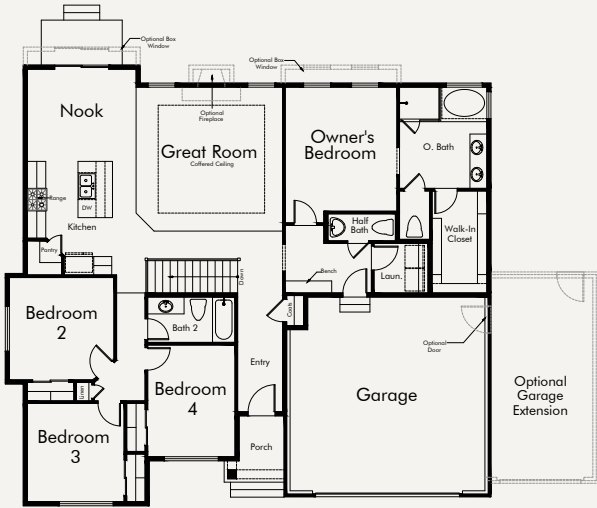


Customize This Plan



Torino (Farmhouse)

Total finished sq. ft.: 1,905
 Total unfinished sq. ft.: 1,841 Total sq. ft.: 3,746
 Bedrooms: 4 Bathrooms: 2 1/2
 Width: 54'-0" Depth: 49'-0"

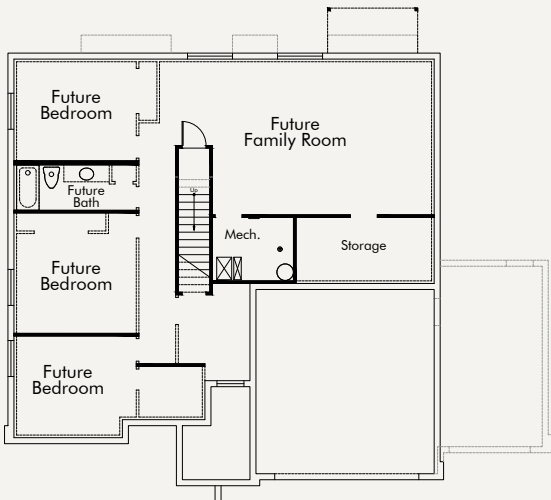
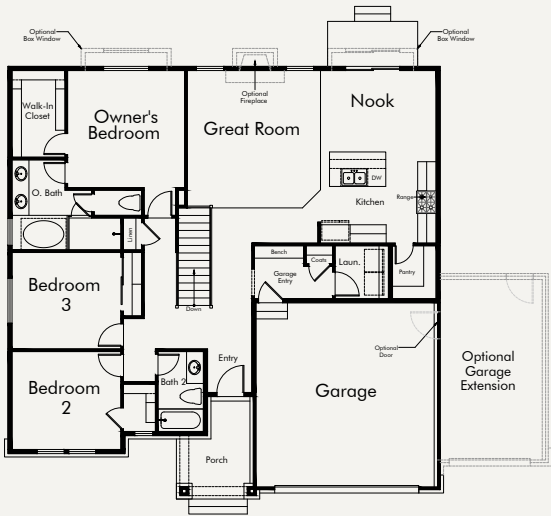


Customize This Plan



Stonebrook (Traditional)

Total finished sq. ft.: 1,687
 Total unfinished sq. ft.: 1,745 Total sq. ft.: 3,432
 Bedrooms: 3 Bathrooms: 2
 Width: 48'-0" Depth: 48'-0"



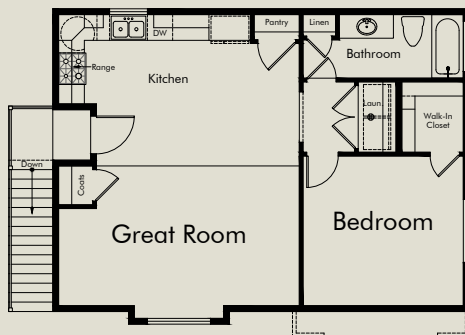
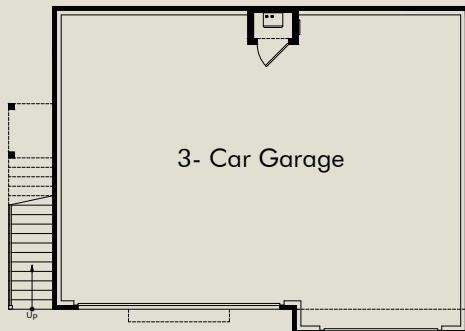
Customize This Plan

ADU Possibilities



Detached Garage with ADU

Total finished sq. ft.: 788
Width: 36'-6" Depth: 26'-0"



HOME PLUS

ADU = Accessory Dwelling Units

Now with Home+ by Ivory Homes, built-in mother-in-law apartment can be seamlessly planned and constructed within your new home.

These units ensure there is a place for everyone, whether you need more room for guests, want to provide support for an aging family member, or desire to generate some rental income, all while maintaining your own space and privacy.





Home Warranty

With one of the best home warranties in the industry, Ivory Homes offers customers peace of mind with a warranty that covers:

1-YEAR: Materials and Workmanship

2-YEARS: Mechanical, Electrical, and Plumbing Systems

10-YEARS: Structural integrity

Smart Home Possibilities

Enjoy the convenience of having a home that's pre-wired and ready for new home automation, from additional Wi-Fi access points to doorbell cameras.

We recommend several Smart Home options below. See sales consultants for details.

Whole-House Connectivity

Add a Smart Home System to connect all of your devices seamlessly through Brilliant Smart Home.

Location-based Geo-Services

Offering responsiveness based on your location, this add-on feature automatically adjusts your thermostat, sends alerts if you forget to arm your security system and more!

Easy Control

Manage your wired home from your favorite smart device! The Smart Home System powered by Brilliant Smart Home allows you to set controls from your Apple, Amazon or Google device.

Intelligent Lighting

Schedule when your lights turn on and off based on your schedule.

Smart Locks

Get visibility and control for your home's access points with seamlessly integrated door locks.

Doorbell Camera

Ring at the door? Just glance at your phone to see and speak to anyone who knocks regardless of whether or not you're home.

Upgrade to any of these features:

- Monitored Security System
- Distributed Audio
- Video Surveillance
- Sprinkler System Control
- Garage Door Control
- Permanent LED Holiday Lighting

The Home Buying



PLANNING

- Initial Deposit
- Loan Application
- Color Selection
- Pre-Construction Meeting & Construction Deposit

CONSTRUCTION

- Permits & Engineering
- Construction Begins
- 4-way Walk-through
- Final Inspection (City/Bank/Ivory Homes)
- New Home Orientation (At least two days before closing)



Process

WHEN YOU BUILD A NEW HOME WITH IVORY HOMES, OUR EXPERIENCED TEAM IS BESIDE YOU EVERY STEP OF THE WAY.

"Our impeccable satisfaction rate boils down to our ability to turn the process of building a home from overwhelming to gratifying. With decades of experience building semi-custom homes, we have refined our process and reduced the stress. We get excited about showing our clients how to make a process that seems so full of moving parts into a fun journey that leaves them with exactly what they set out to create. Our team of expert planners, designers, and builders will work hard to create a stress-free experience from your initial meeting, the design and construction process, to the finishing details."

- John Cahoon, Area Manager

CLOSING

- Closing at Title Company
- Recording
- MOVE IN! (Keys are available after recording)

WARRANTY

- Every Ivory Home comes with a 10-year limited home warranty, one of the best in the industry.

36 Signature Communities

WEBER COUNTY

Weber View

Pleasant View

Luxury Homes with Mountain Views

Haven Parkway

West Haven

One Acre Estate Lot

DAVIS COUNTY

Cranefield Estates

Clinton

Pools, Parks and Golf Course

Legacy Park Estates

Syracuse

1/4-1/2 Acre Next to Park

Evergreen Farms

Layton

Beautiful Mountain and Valley Views

Orchard Ridge

Kaysville

East Foothills with Views

Flatrock

Farmington

Expansive Home Sites, Prime Location

Belmont Farms

West Bountiful

Country Quiet Large Lots

SALT LAKE COUNTY

Casto Court

Holladay

One of Holladay's Best Neighborhoods

Cottonwood Canyon Cove

Cottonwood Heights

Close to Little and
Big Cottonwood Canyons

Butler Hills

Cottonwood Heights

Cul-De-Sac Lots with Amazing Views

Big Willow Creek

Draper

126 Luxury Homes with
Easy Access To I-15

Bainbridge

East Draper

Near Library and City Park

Dry Creek Highlands

West Jordan

Large Cul-De-Sac Lots on Trail System

Harvest Gardens

Riverton

Premiere Living for 55+

Hidden Oaks

Herriman

Beautiful Foothills Lots

TOOELE

North Star

Grantsville

1,500 Lots - Beautiful Valley Views

Sagewood Village

Stansbury Park

Premiere Master Planned Community

UTAH COUNTY

Ridgeview

Highland

With Murdock Trail Access

Holbrook Farms

Lehi

Across from Thanksgiving Point

Family Park Estates

East Lehi

1/3 to 1/2 Acre View Lots

Overland

Eagle Mountain

Close to Schools, Parks and Club House

Anderson Farms

Lindon

Easy Access, Next To Park

Broadview Shores

Provo

Next to New Provo High

\$ 4 Ivory Design Centers

SUMMIT

Countryside

Hoytsville

Acre Plus Lots Next to the River
with Great Fishing

Park City Heights

Park City

Mountain Lifestyle and
Award Winning Schools

Stewart Ranches

Francis

Access to World Class Snowmobiling

WASATCH

Coyote Ridge

Heber

East of I-40 and Northeast of Town

Beaufontaine

Heber

South of Red Ledges
Near New Temple

Christensen Farms

Heber

Acre Lots with Great View
of Timpanogos

SOUTHERN UTAH

Lakeside At Desert Sands

Hurricane

Next to Sand Hollow State Park

Paseos At Sienna Hills

Washington

Great Pool and Nightly Rentals

Shooting Star

Washington

1/4 Acre Lots with Amazing Views

Avenidas At Hidden Valley

St. George

Club Amenities and City Park

4 DESIGN CENTERS

Davis County Office and Design Center

1536 N. Woodland Park Dr., Ste. 210
Layton, Utah 84041
Phone: 801-499-5991

Salt Lake City Office And Design Center

970 E. Woodoak Lane
Salt Lake City, Utah 84117
Phone: 801-747-7000

Utah County Office And Design Center

3340 N. Center Street
Lehi, Utah 84043
Phone: 801-407-6891

St. George Office And Design Center

1611 E. 2450 S., #4a
St. George, Utah 84790
Phone: 435-986-6900

Want to visit or contact a location?
Scan the QR Code for a Map of Addresses and Phone Numbers



WEBER
COUNTY



DAVIS
COUNTY



TOOELE



SALT LAKE
COUNTY



UTAH
COUNTY



SUMMIT &
WASATCH



SOUTHERN
UTAH



Creating Possibilities For You

Ivory Homes makes getting into your dream home easy.



Better rates, saving you thousands with interest rate buydowns, exceptional service, and credit repair. See what they have to offer at www.momentumloans.com.



Helps you sell your existing home and gives you a commission refund up to 3% or a guaranteed lease for up to 3 years. Learn more at www.ivoryhomes.com/smart-move-guarantee



* Each company provides services independent of Ivory Homes and these services may change without notice.