

LAKE SIDE AT DESERT SANDS

Hurricane, Utah



 **IVORYHOMES**
Utah's Number One Homebuilder®



LAKE SIDE AT DESERT SANDS

If you are looking for a home in an incredible location with lots of fun in the sun, Lakeside at Desert Sands is for you. With 127 estate home lots, it is just a 3 minute drive from Sand Hollow State Park where you can enjoy a day on the lake or explore the surrounding red rock trails on your dirt bike or ATV. Enjoy being tucked away from the hustle and bustle in town in a quiet, pristine neighborhood with incredible views and nature all around. This truly is the ultimate destination with adventures to be had right in your backyard.





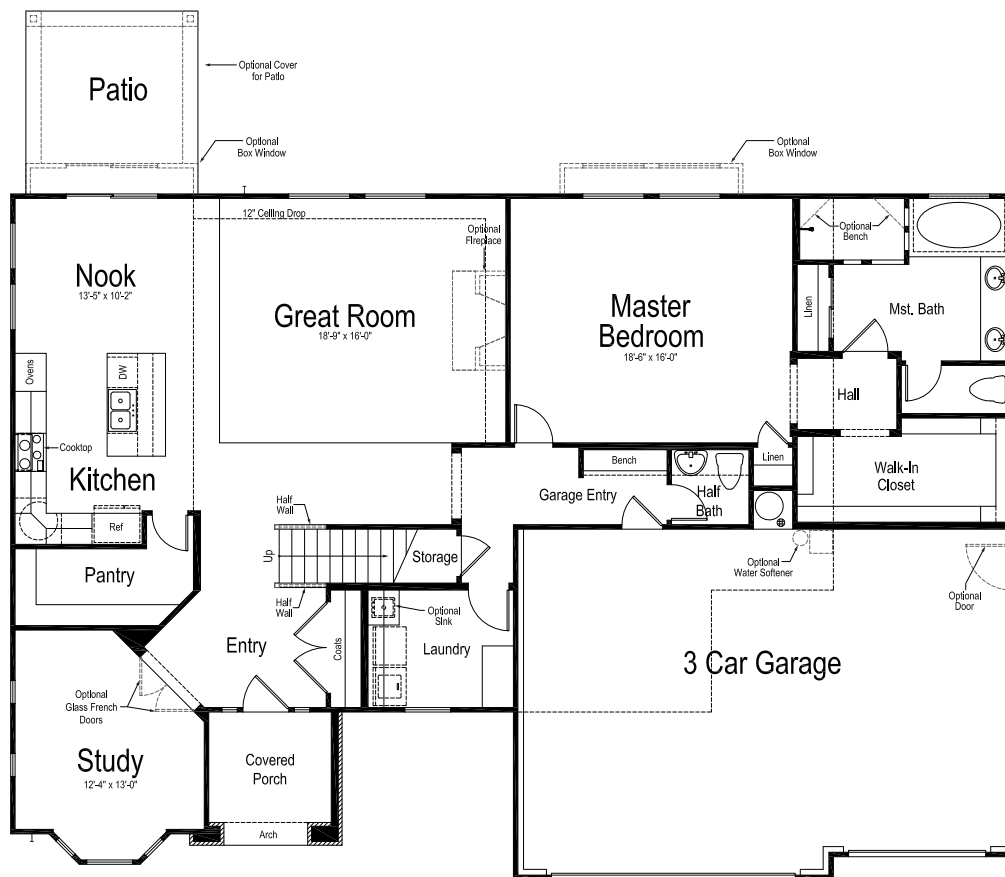
Acadia

(EUROPEAN)

Total sq. ft.: 3,111

4 bedrooms | 3.5 bathrooms
width 66'-0" | depth 45'-0"

TWO-STORY



Main Level



Upper Level

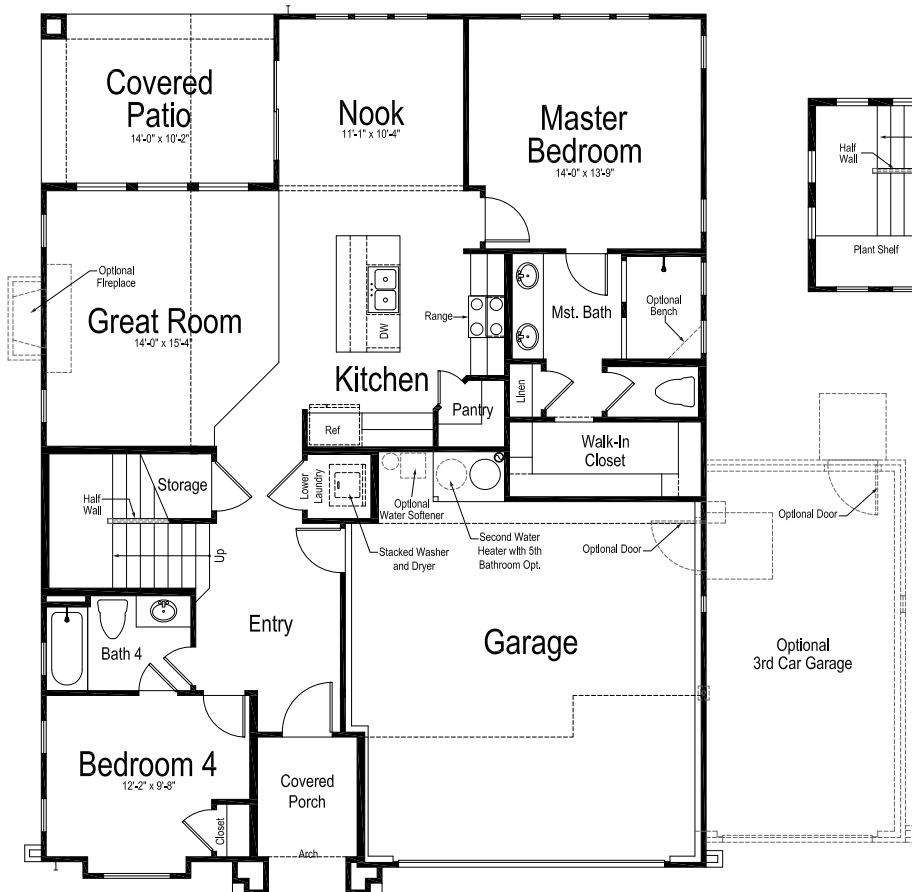


Biscayne

(SPANISH)

Total sq. ft.: 2,600+

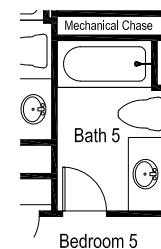
5 bedrooms | 5 bathrooms
width 40'-0" | depth 53'-0"



Main Level



Upper Level



Optional 5th Bath





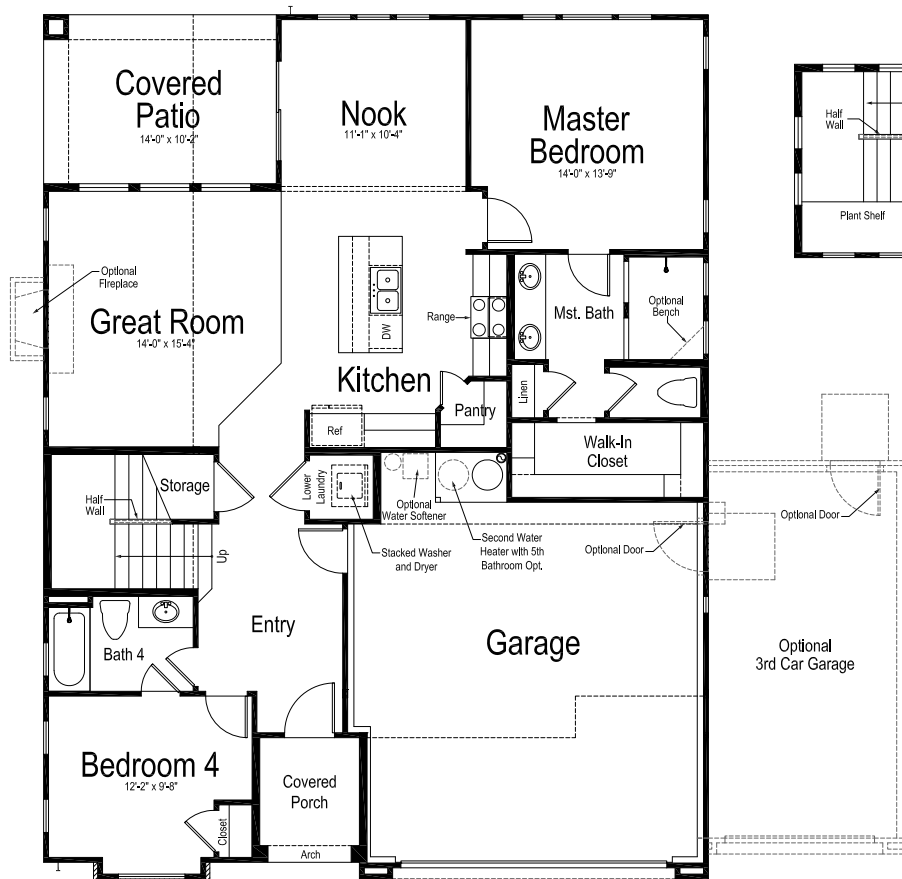
Biscayne

(EUROPEAN)

Total sq. ft.: 2,600+

5 bedrooms | 5 bathrooms
width 40'-0" | depth 52'-0"

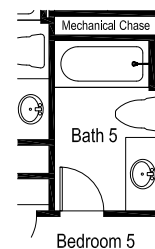
TWO-STORY



Main Level



Upper Level



Optional 5th Bath

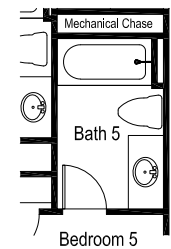
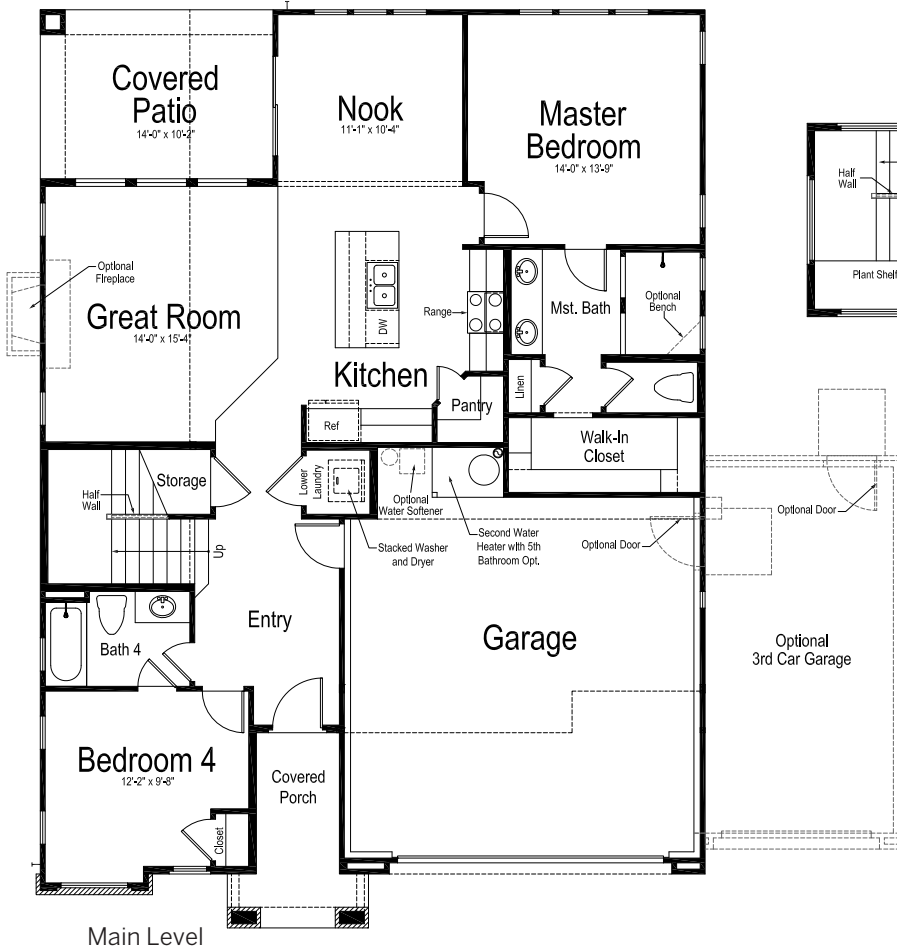


Biscayne

(MODERN)

Total sq. ft.: 2,600+

5 bedrooms | 5 bathrooms
width 40'-0" | depth 57'-0"



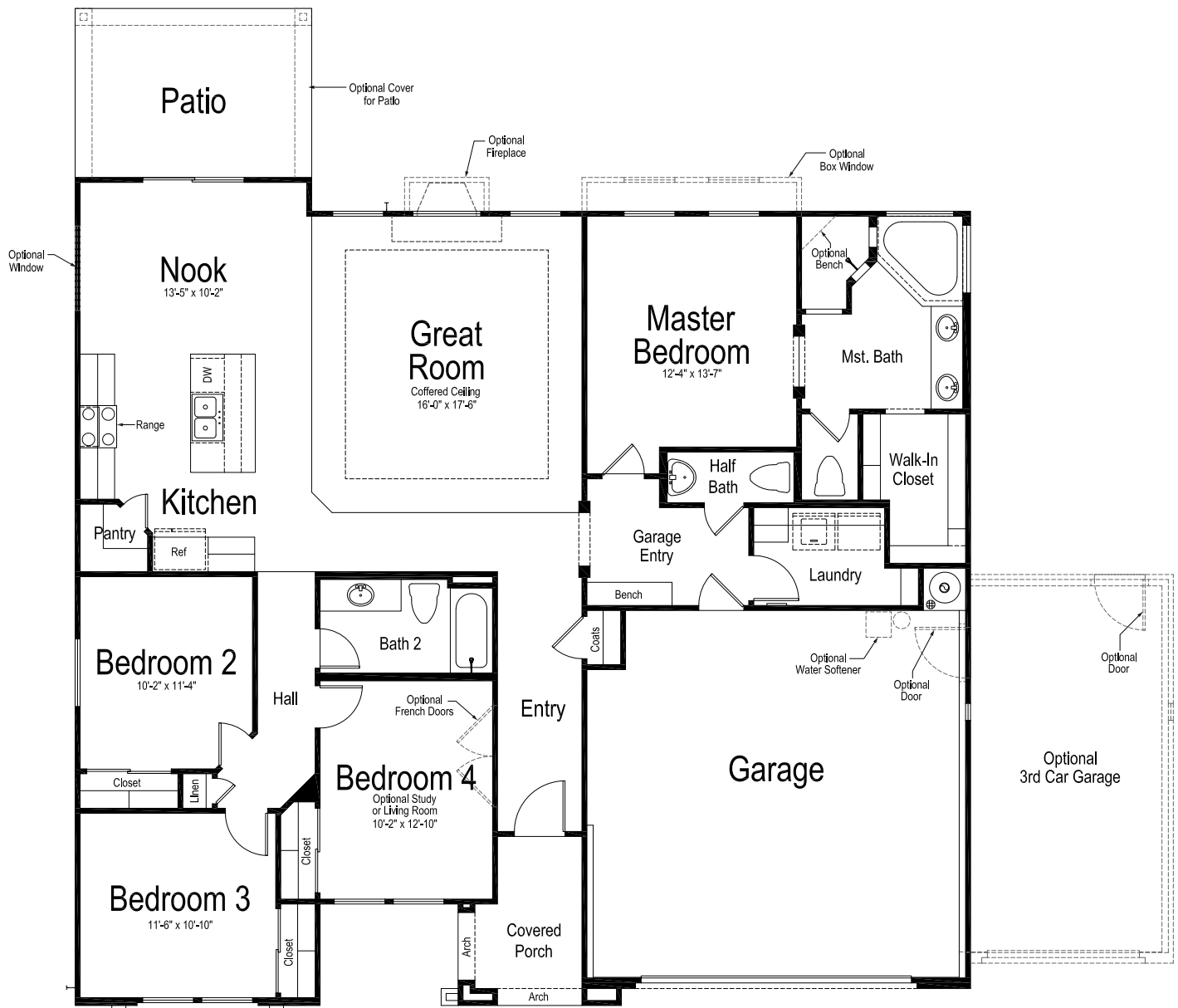


Sequoia

(SPANISH)

Total sq. ft.: 1,873
4 bedrooms | 2.5 bathrooms
width 53'-0" | depth 49'-0"

RAMBLER

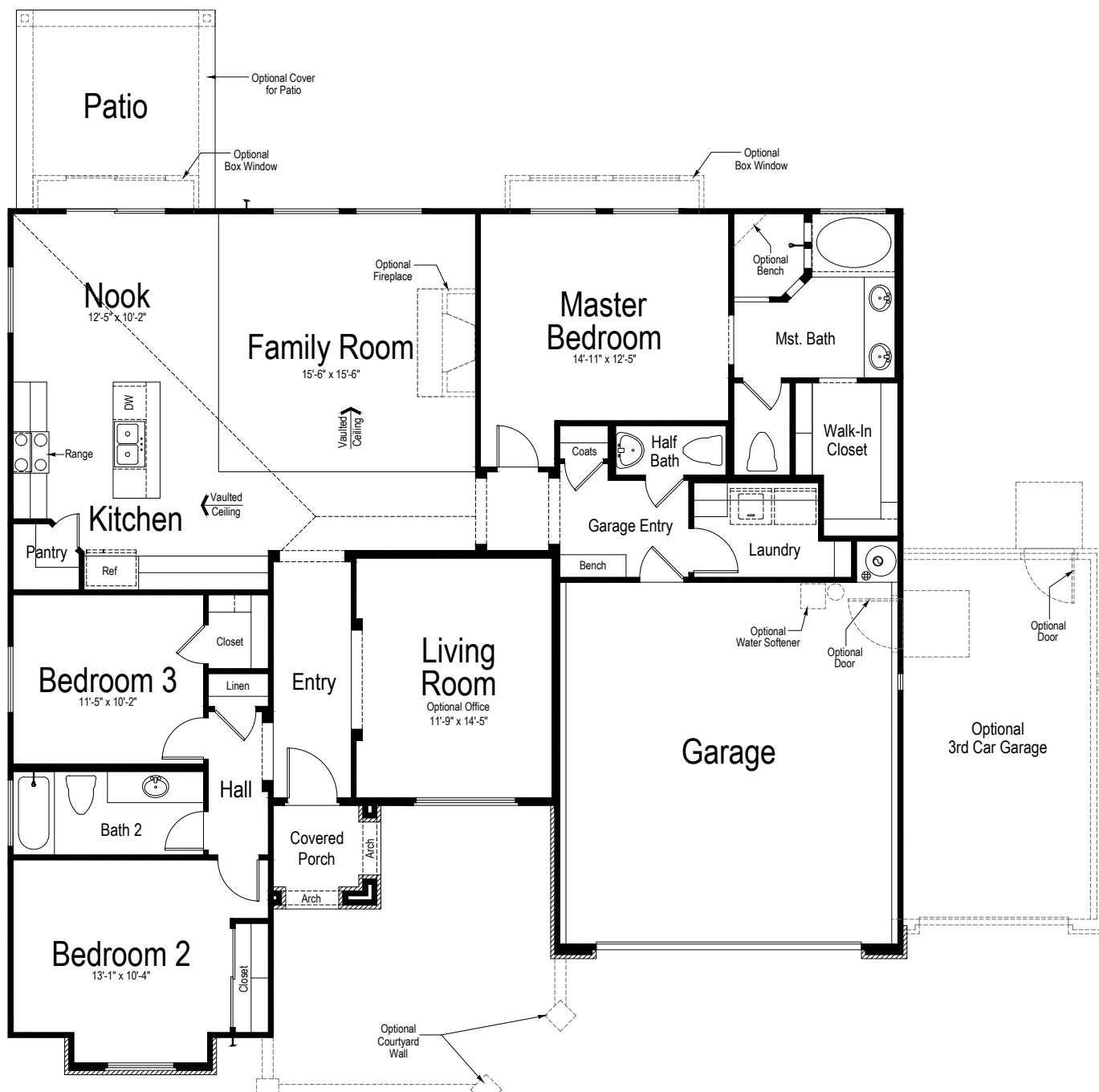


Glacier

(EUROPEAN)

Total sq. ft.: 1,900

3 bedrooms | 2.5 bathrooms
width 54'-0" | depth 52'-0"





Arches

(EUROPEAN)

Total sq. ft.: 2,008

3 bedrooms | 3.5 bathrooms
width 45'-0" | depth 54'-0"

RAMBLER



Rainier

(EUROPEAN)

Total sq. ft.: 2,036

4 bedrooms | 3.5 bathrooms

courtyard optional

width 50'-0" | depth 64'-0"





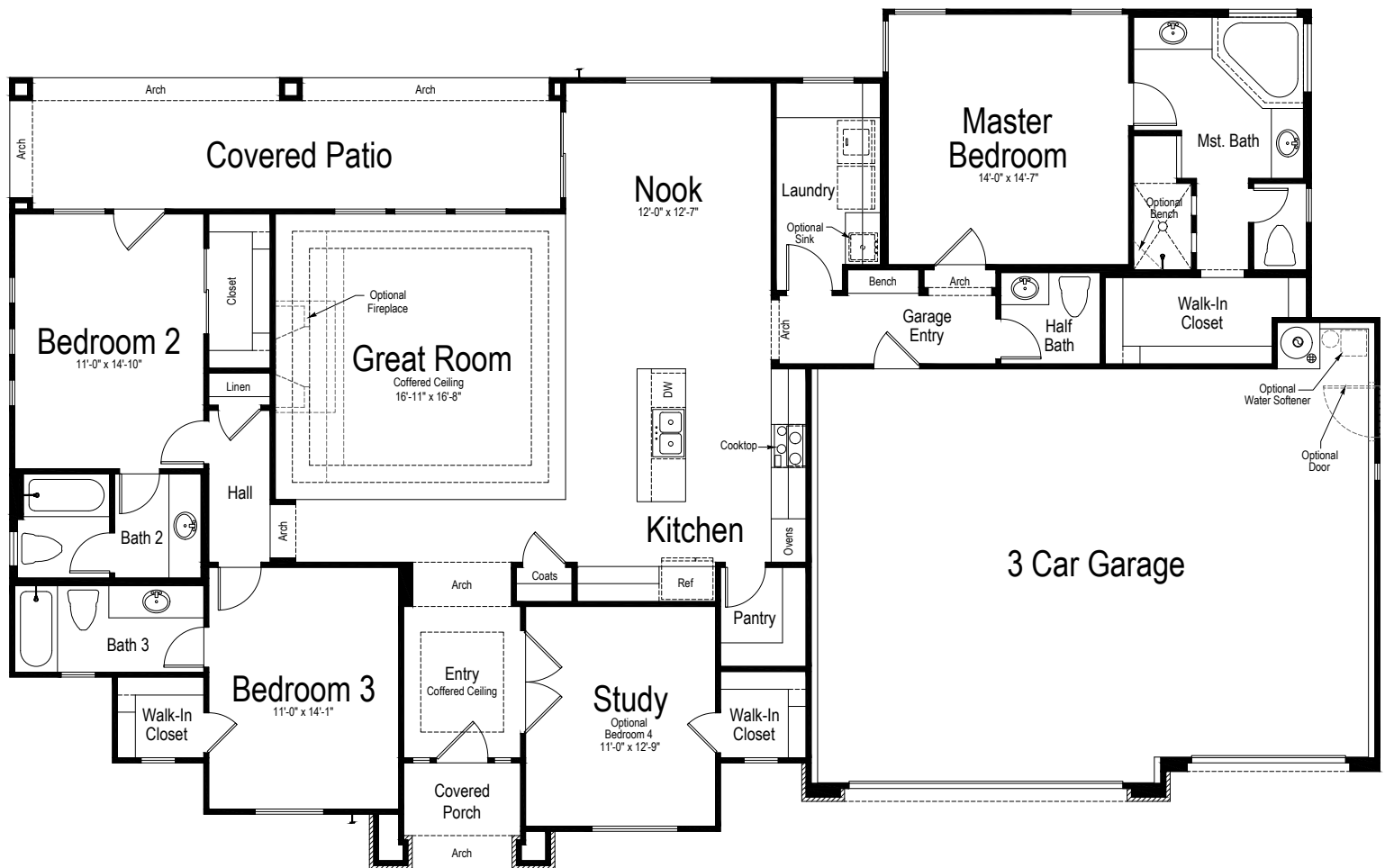
Denali

(EUROPEAN)

Total sq. ft.: 2,260

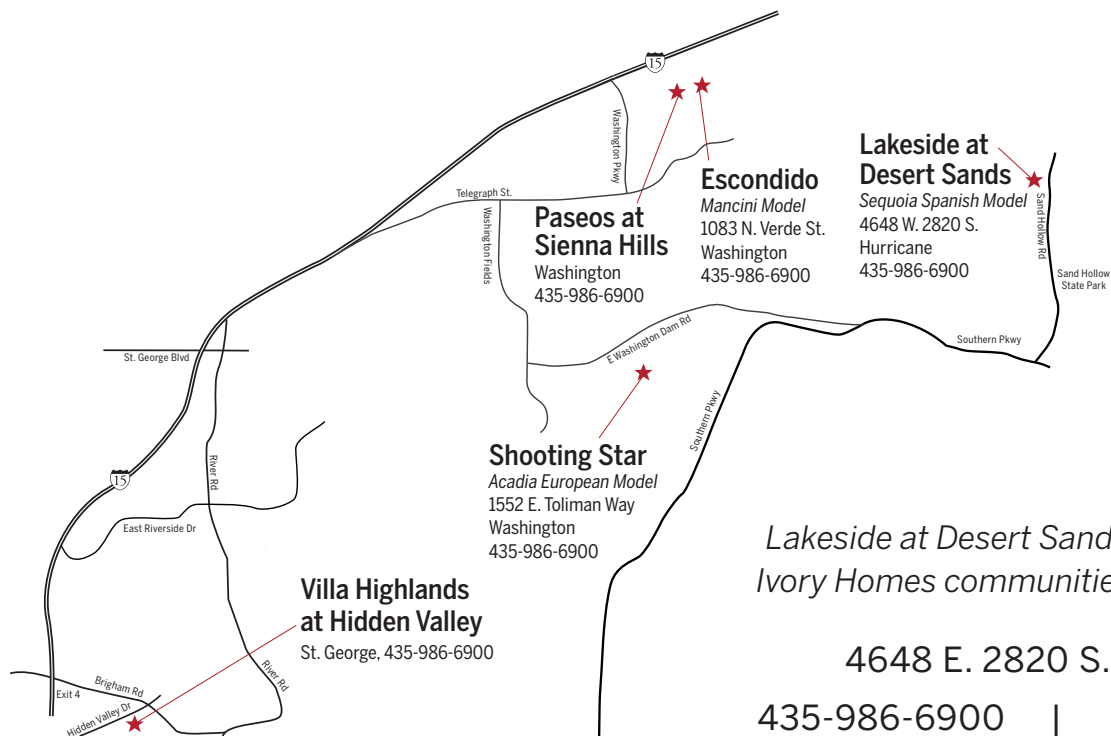
3 bedrooms | 3.5 bathrooms
width 80'-0" | depth 50'-0"

RAMBLER





LAKE SIDE AT DESERT SANDS



Lakeside at Desert Sands is just one of five Ivory Homes communities in Southern Utah

4648 E. 2820 S., Hurricane
435-986-6900 | ivoryhomes.com



For more information,
please scan the QR code

 **IVORYHOMES**

