

MARINA VILLAGE

AT DAYBREAK







MARINA VILLAGE ON THE LAKE AT DAYBREAK

Ivory Homes is excited to offer this new community located in Daybreak. A luxury, lakeside townhome community, Marina Village is conveniently located near the shopping and dining of SoDa Row. Every townhome will have a relaxing rooftop deck that will enable the residents to enjoy the beautiful views of lakeside living.

Daybreak is designed to keep you close to the places you want to be while bringing you closer to your neighbors too. Spend more time outside on the 22 miles of trails, in the 22 acres of parks, or on Oquirrh Lake. Walk from your front door to schools, stores, restaurants and even work. Enjoy fishing and canoeing just down the street from your home. The amenities are endless here for people of all ages.

- Beautifully designed modern, contemporary townhomes with four decor packages
- Rooftop living
- Maintenance-free landscaping
- Lakeside views
- Walking distance to SoDa Row shopping & dining
- Smart homes, wifi ready
- 22 miles of biking trails
- Parks with playgrounds
- Dog parks
- Community gardens
- Adjacent to Oquirrh Lake for lounging, boating or fishing
- Soccer fields, basketball courts, volleyball and tennis courts
- Near TRAX station
- Near University of Utah Medical Center

*All information contained in this web site/catalog is deemed reliable but not guaranteed. All properties/materials are subject to prior sale, change, or withdrawal notice. Ivory Homes, Utah's Number One Homebuilder believes all information to be correct but assumes no legal responsibility for accuracy.



Marina Village Phase Two





HOME PLANS

ADDRESS	UNIT #	COLOR SELECTION	HOUSE PLAN	SQ.FT.	BEDROOMS	FINISHED BATHS	FEATURES
Building 2A							
4712	135	Malibu	Santa Monica	2249	3	2.5	Lakefront, kitchenette, rooftop deck
4714	136	Cove	Huntington	1708	3	2.5	Lakefront, rooftop deck
4716	137	Malibu	Huntington 2BR	1708	2	2.5	Lakefront, rooftop deck
4718	138	Venice	Huntington	1708	3	2.5	Lakefront, rooftop deck
4722	139	Cove	Huntington	1708	3	2.5	Lakefront, rooftop deck
4724	140	Laguna	Huntington 2BR	1708	2	2.5	Lakefront, rooftop deck
4726	141	Malibu	Huntington	1708	3	2.5	Lakefront, rooftop deck
4728	142	Laguna	Santa Monica	2249	3	2.5	Lakefront, kitchenette, rooftop deck
Building 2B							
11133	143	Malibu	Santa Monica	2249	3	2.5	Kitchenette, rooftop deck
11137	144	Laguna	Santa Monica	2249	3	2.5	Rooftop deck
Building 2C							
11131	145	Malibu	Santa Monica	2249	3	2.5	Rooftop deck
11129	146	Laguna	Huntington	1708	3	2.5	Rooftop deck (half IPE tile finished)
11119	147	Cove	Huntington	1708	3	2.5	Rooftop deck (half IPE tile finished)
11117	148	Venice	Santa Monica	2249	3	2.5	Kitchenette, rooftop deck
Building 2D							
11109	149	Laguna	Santa Monica	2249	3	2.5	Lakefront, kitchenette, rooftop deck
11103	150	Malibu	Huntington	1708	3	2.5	Lakefront, rooftop deck
11101	151	Venice	Huntington	1708	3	2.5	Lakefront, rooftop deck
11097	152	Cove	Huntington	1708	3	2.5	Lakefront, rooftop deck
11093	153	Laguna	Huntington	1708	3	2.5	Lakefront, rooftop deck
11091	154	Cove	Santa Monica	2249	3	2.5	Lakefront, kitchenette, rooftop deck
Building 2E							
4759	155	Malibu	Balboa	1655	2	2.5	Rooftop deck
4761	156	Laguna	Balboa	1655	2	2.5	Rooftop deck
4765	157	Cove	Balboa	1655	2	2.5	Rooftop deck
4767	158	Venice	Balboa	1655	2	2.5	Rooftop deck
Building 2F							
4769	159	Laguna	Balboa	1655	2	2.5	Rooftop deck
4771	160	Cove	Balboa	1655	2	2.5	Rooftop deck
4775	161	Venice	Balboa	1655	2	2.5	Rooftop deck
477	162	Malibu	Balboa	1655	2	2.5	Rooftop deck
Building 2G							
4781	163	Laguna	Santa Monica	2249	3	2.5	Kitchenette, rooftop deck
4783	164	Venice	Huntington	1708	3	2.5	Rooftop deck (half IPE tile finished)
4787	165	Cove	Huntington	1708	3	2.5	Rooftop deck (half IPE tile finished)
4791	166	Malibu	Santa Monica	2249	3	2.5	Rooftop deck

*All information contained in this web site/catalog is deemed reliable but not guaranteed. All properties/materials are subject to prior sale, change, or withdrawal notice. Ivory Homes, Utah's Number One Homebuilder believes all information to be correct but assumes no legal responsibility for accuracy.

ADDRESS	UNIT #	COLOR SELECTION	HOUSE PLAN	SQ.FT.	BEDROOMS	FINISHED BATHS	FEATURES
Building 2H							
11107	167	Malibu	Santa Monica	2249	3	2.5	Rooftop deck
11111	168	Cove	Huntington	1708	3	2.5	Rooftop deck (half IPE tile finished)
11113	169	Venice	Huntington 2BR	1708	2	2.5	Rooftop deck (half IPE tile finished)
11121	170	Malibu	Huntington 2BR	1708	2	2.5	Rooftop deck (half IPE tile finished)
11123	171	Cove	Huntington	1708	3	2.5	Rooftop deck (half IPE tile finished)
11127	172	Venice	Santa Monica	2249	3	2.5	Kitchenette, rooftop deck
Building 2I							
11139	173	Malibu	Santa Monica	2249	3	2.5	Kitchenette, rooftop deck
11141	174	Venice	Huntington	1708	3	2.5	Rooftop deck (half IPE tile finished)
11143	175	Cove	Huntington 2BR	1708	2	2.5	Rooftop deck (half IPE tile finished)
11147	176	Malibu	Huntington	1708	3	2.5	Rooftop deck (half IPE tile finished)
11149	177	Laguna	Santa Monica	2249	3	2.5	Rooftop deck
Building 2J							
4746	178	Laguna	Santa Monica	2249	3	2.5	Rooftop deck
4742	179	Malibu	Huntington	1708	3	2.5	Rooftop deck (half IPE tile finished)
4738	180	Laguna	Huntington 2BR	1708	2	2.5	Rooftop deck (half IPE tile finished)
4736	181	Cove	Huntington 2BR	1708	2	2.5	Rooftop deck (half IPE tile finished)
4734	182	Venice	Huntington	1708	3	2.5	Rooftop deck (half IPE tile finished)
4732	183	Malibu	Santa Monica	2249	3	2.5	Kitchenette, rooftop deck



HUNTINGTON / SANTA MONICA TOWNHOMES



BUILDING 2A

Unit #142

Plan:
SANTA MONICA
Color Package:
LAGUNA

Unit #135

Plan:
SANTA MONICA
Color Package:
MALIBU

Unit #136

Plan:
HUNTINGTON
Color Package:
COVE

Unit #137

Plan:
HUNTINGTON 2BR
Color Package:
MALIBU

Unit #138

Plan:
HUNTINGTON
Color Package:
VENICE

Unit #139

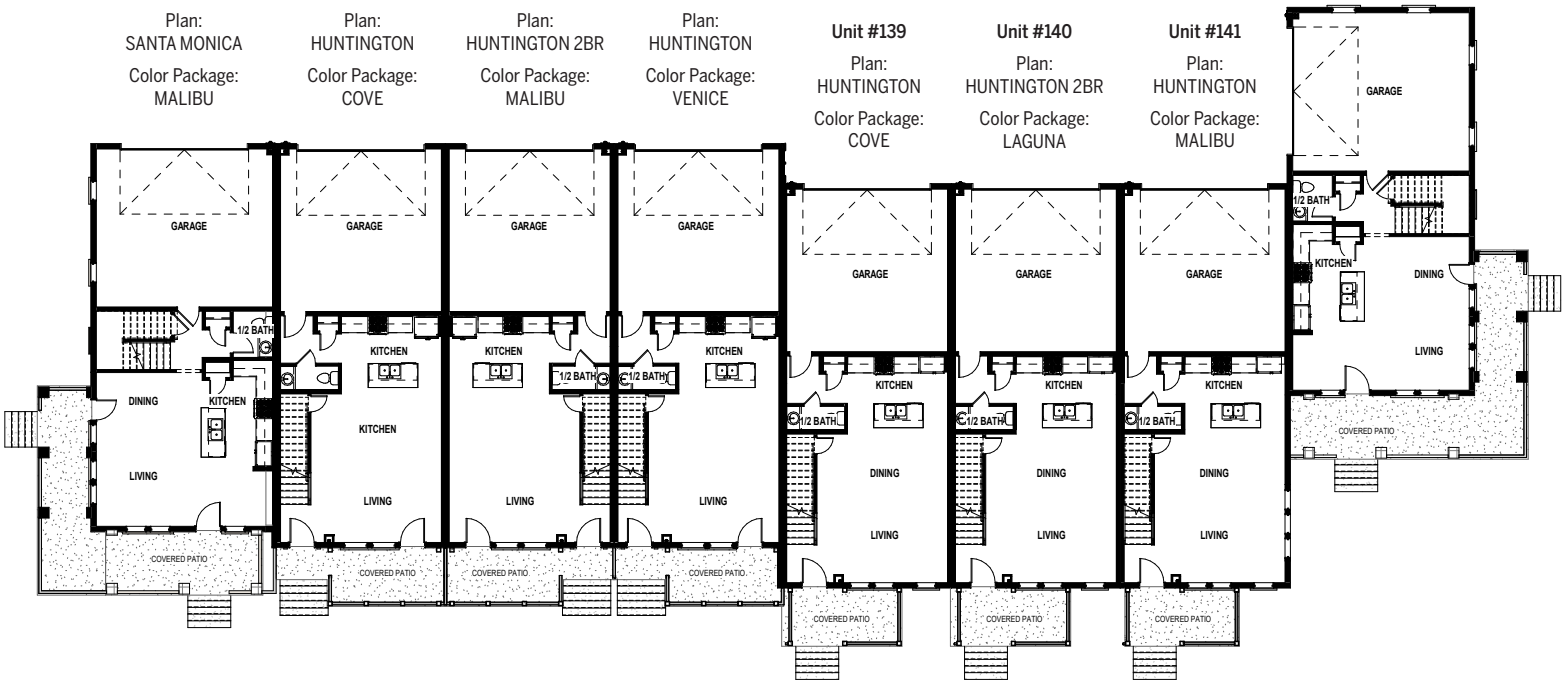
Plan:
HUNTINGTON
Color Package:
COVE

Unit #140

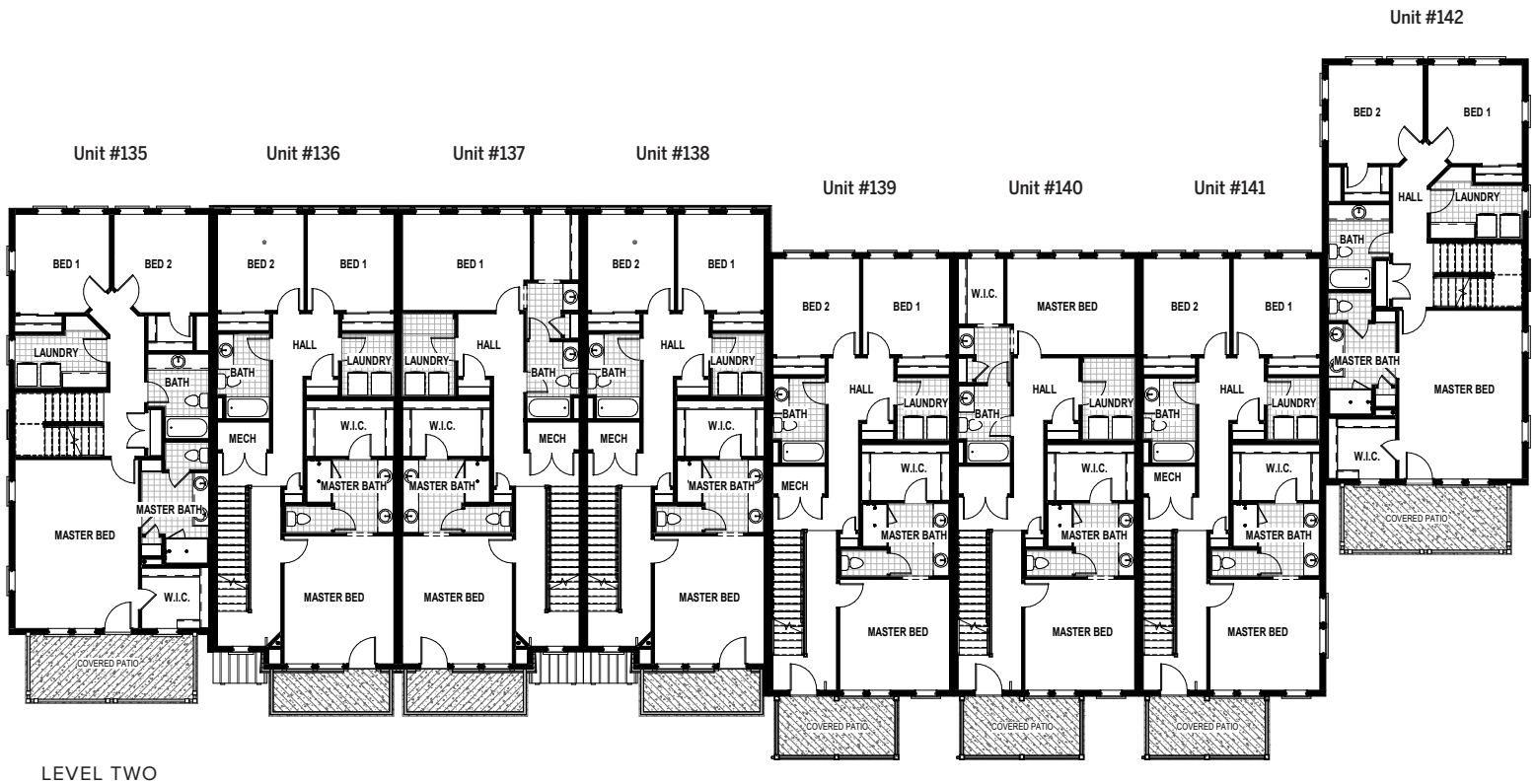
Plan:
HUNTINGTON 2BR
Color Package:
LAGUNA

Unit #141

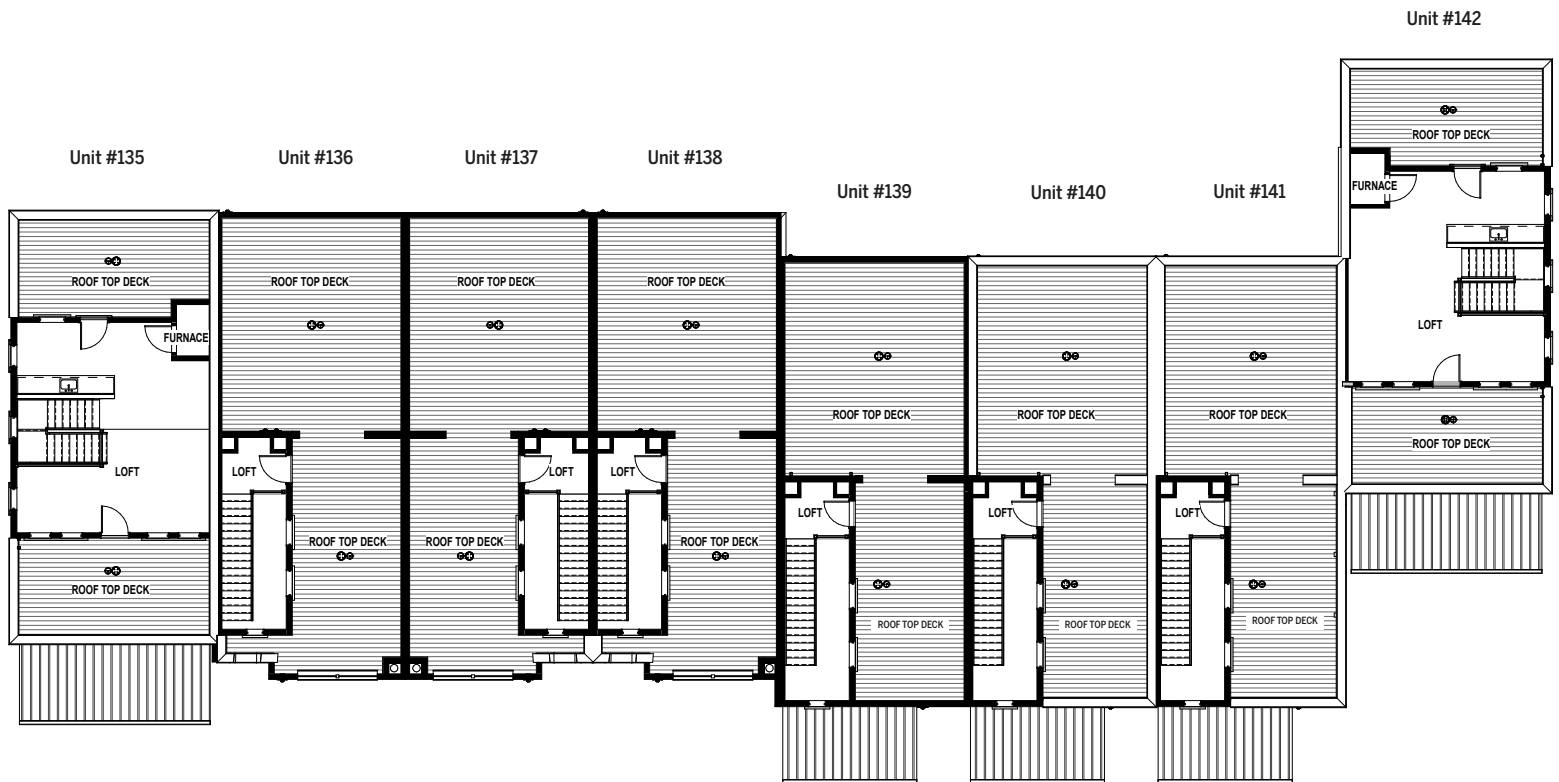
Plan:
HUNTINGTON
Color Package:
MALIBU



LEVEL ONE



LEVEL TWO

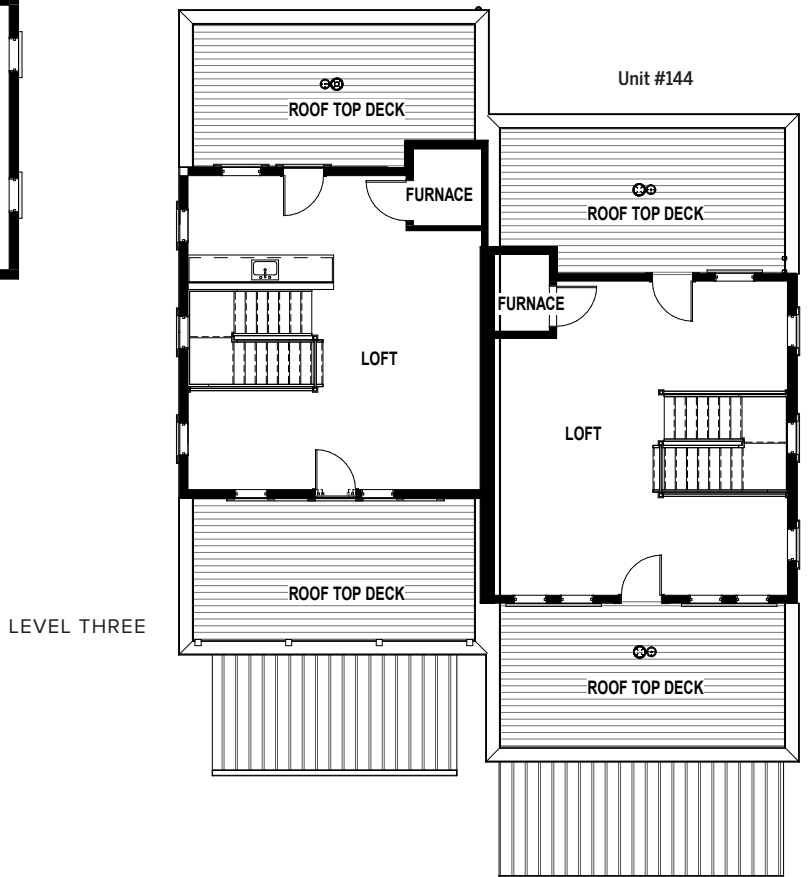
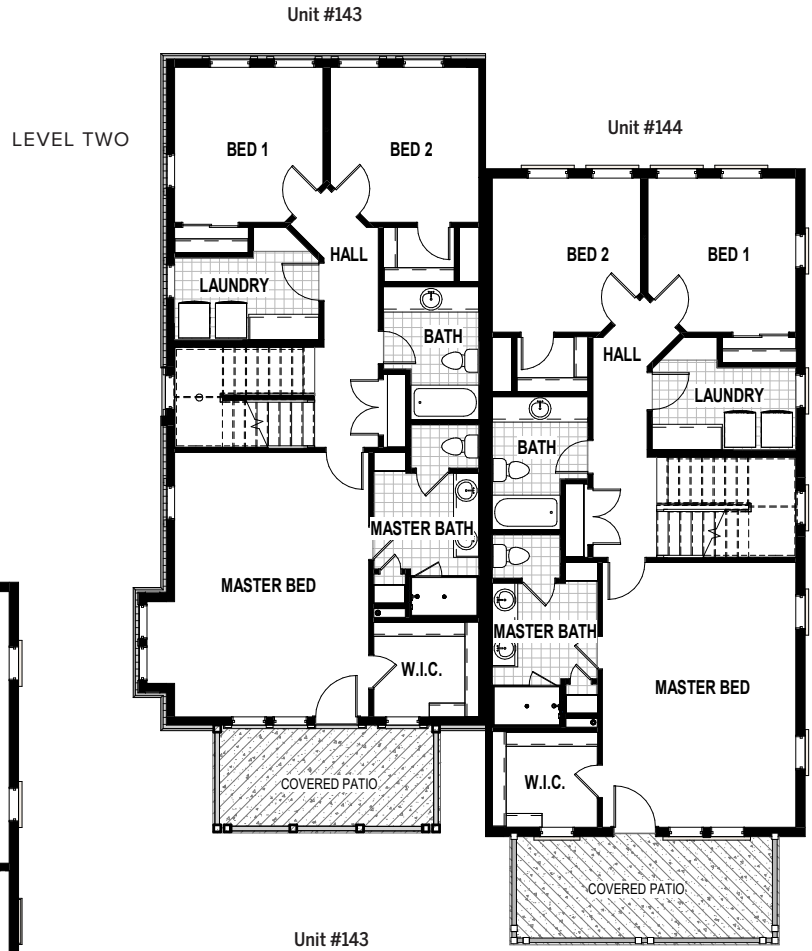
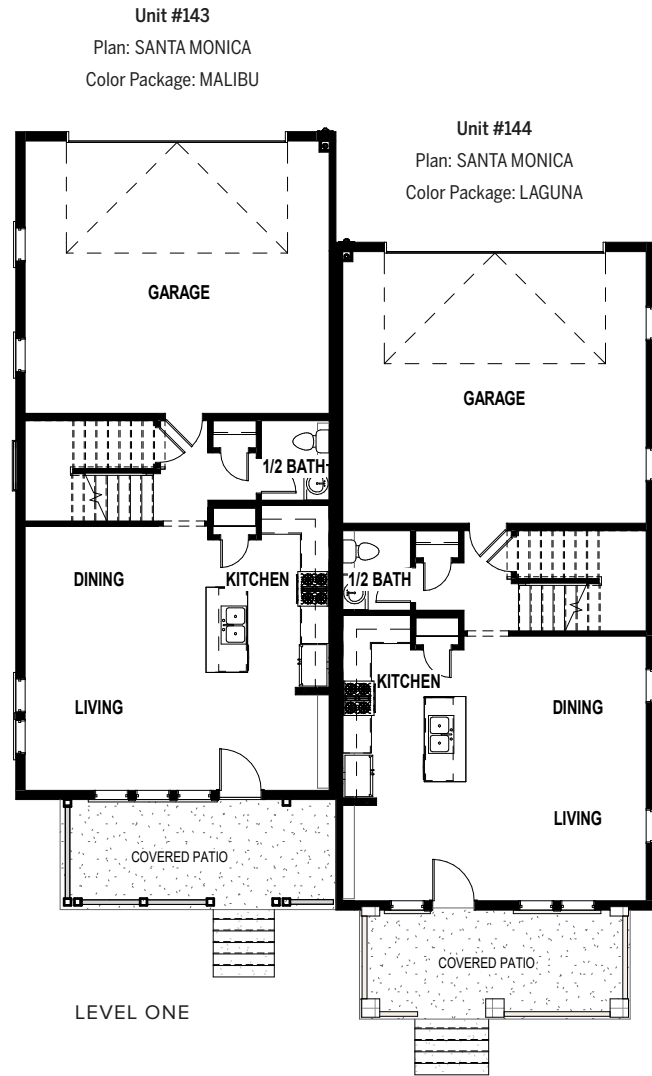


LEVEL THREE

SANTA MONICA TOWNHOMES



BUILDING 2B



HUNTINGTON / SANTA MONICA TOWNHOMES

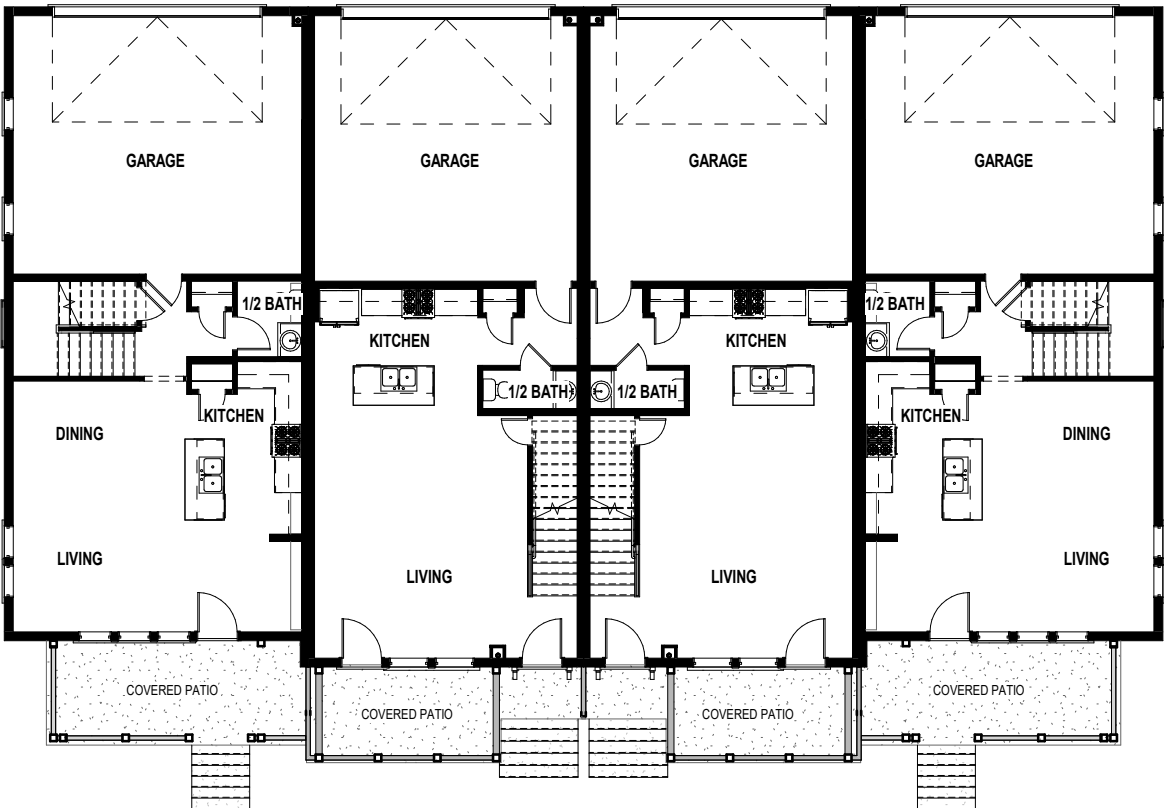


Unit #145
Plan: SANTA MONICA
Color Package: MALIBU

Unit #146
Plan: HUNTINGTON
Color Package: LAGUNA

Unit #147
Plan: HUNTINGTON
Color Package: COVE

Unit #148
Plan: SANTA MONICA
Color Package: VENICE



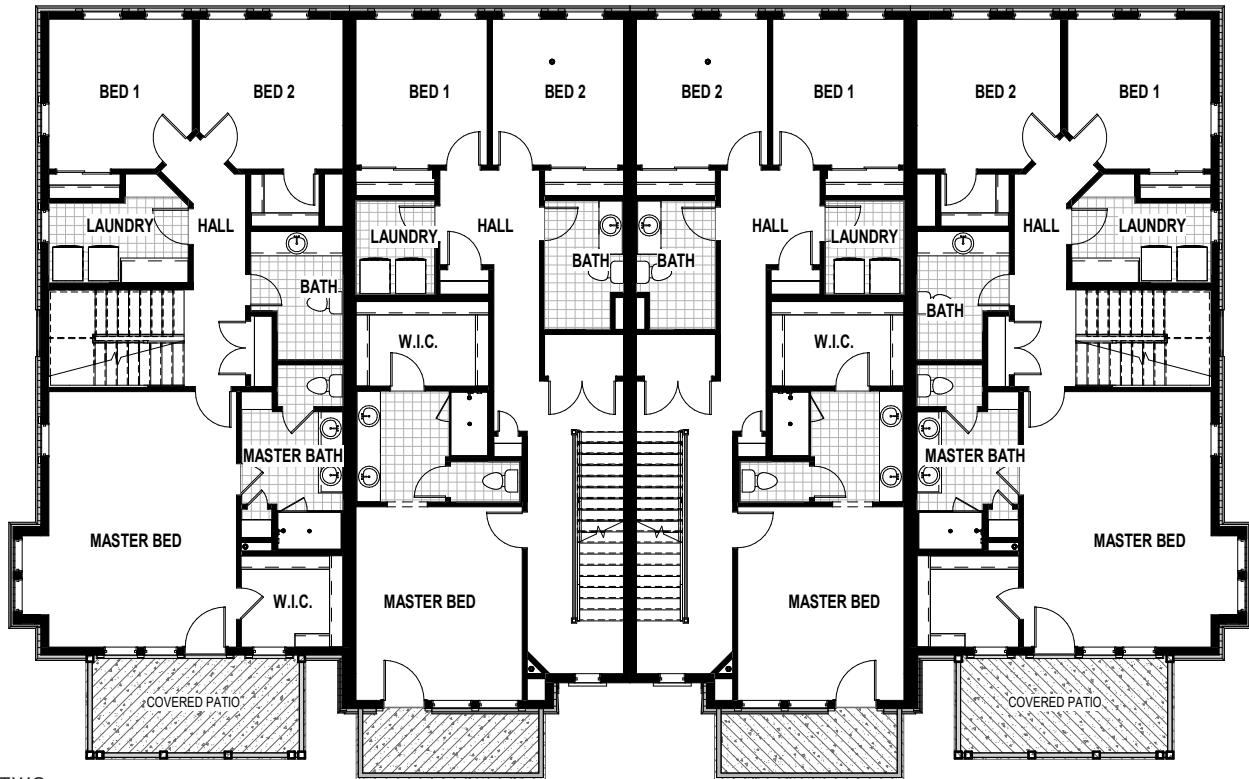
© Ivory Homes. The use of these plans and renderings is expressly limited to Ivory Homes. Re-use, reproduction, or publication by any method, in whole or in part, is prohibited. All renderings of exteriors and floor plans are artist's conceptions and may vary from the actual home as built. All square footages are approximate. *All information contained in this web site/catalog is deemed reliable but not guaranteed. All properties/materials are subject to prior sale, change, or withdrawal notice. Ivory Homes, Utah's Number One Homebuilder believes all information to be correct but assumes no legal responsibility for accuracy.

Unit #145

Unit #146

Unit #147

Unit #148



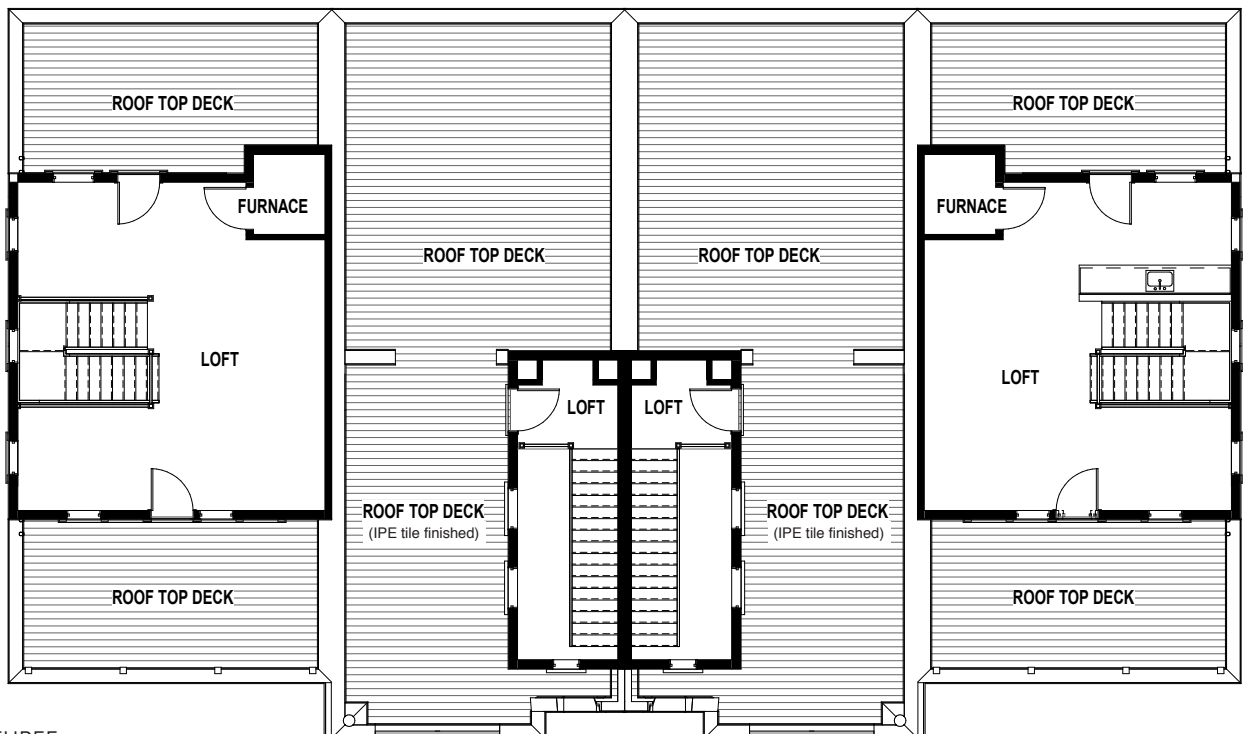
LEVEL TWO

Unit #145

Unit #146

Unit #147

Unit #148



LEVEL THREE

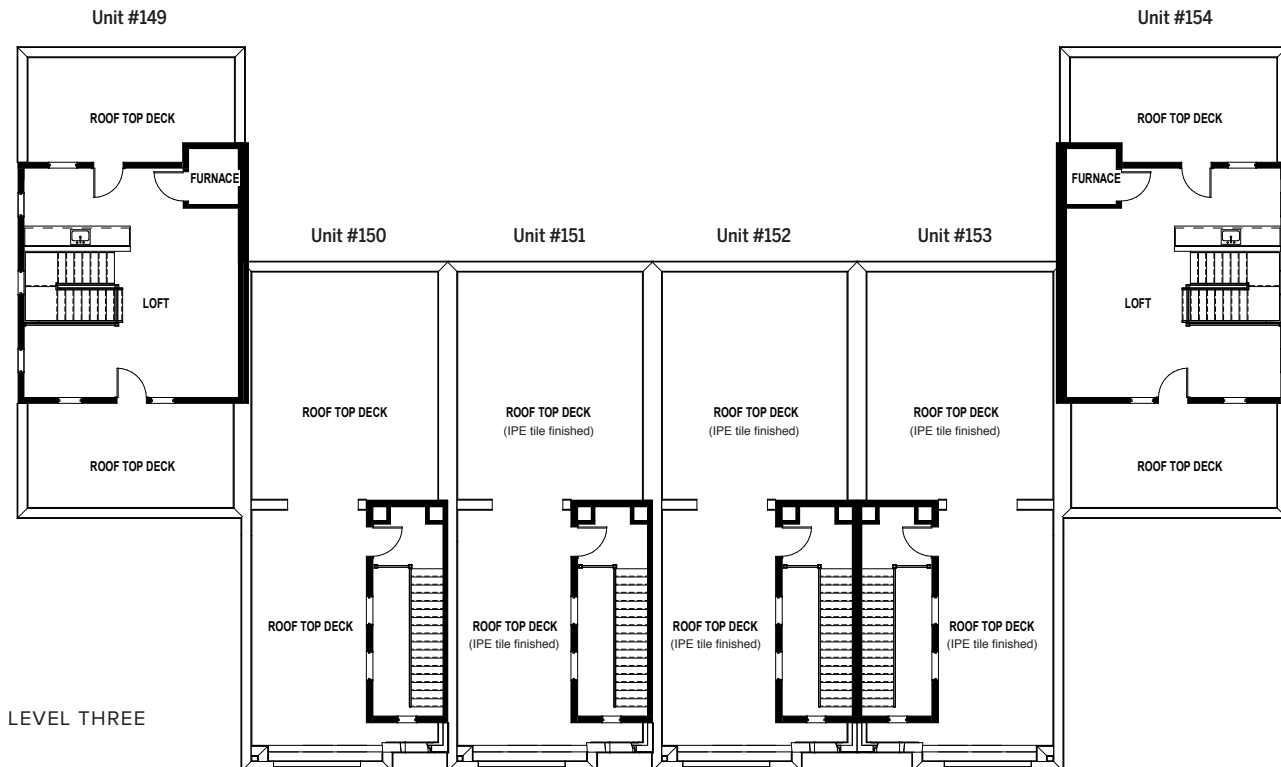
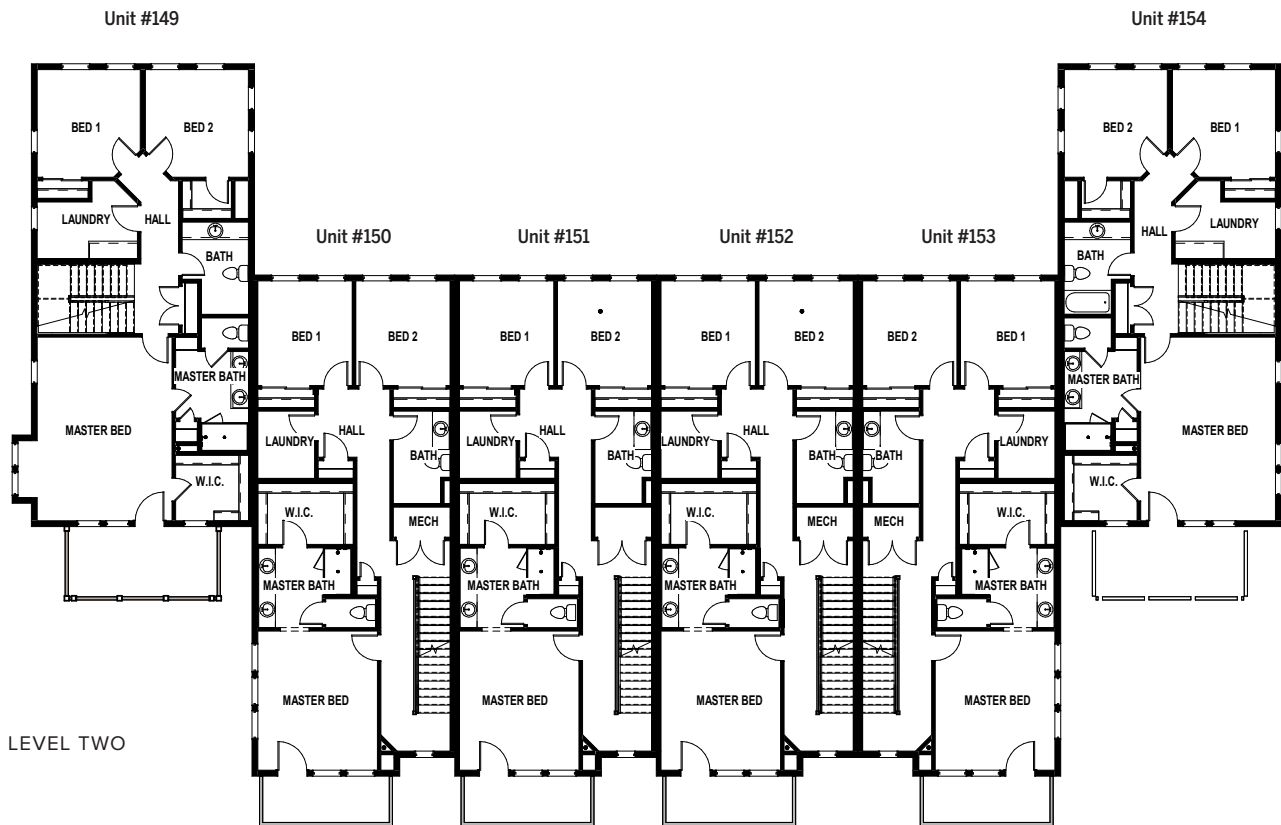
HUNTINGTON / SANTA MONICA TOWNHOMES



Unit #149
Plan: SANTA MONICA
Color Package:
LAGUNA

Unit #154
Plan: SANTA MONICA
Color Package:
COVE





BALBOA TOWNHOMES

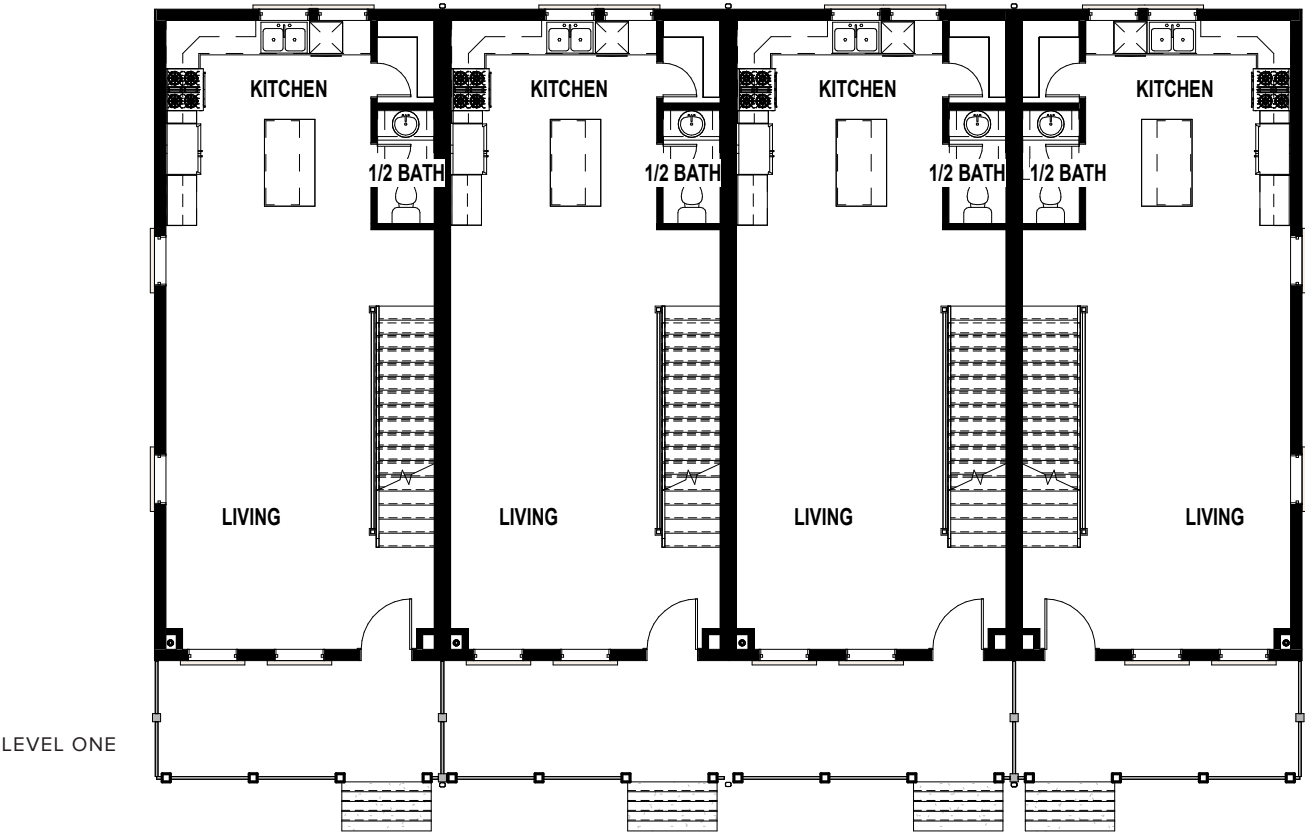


Unit #155
Plan: BALBOA
Color Package: MALIBU

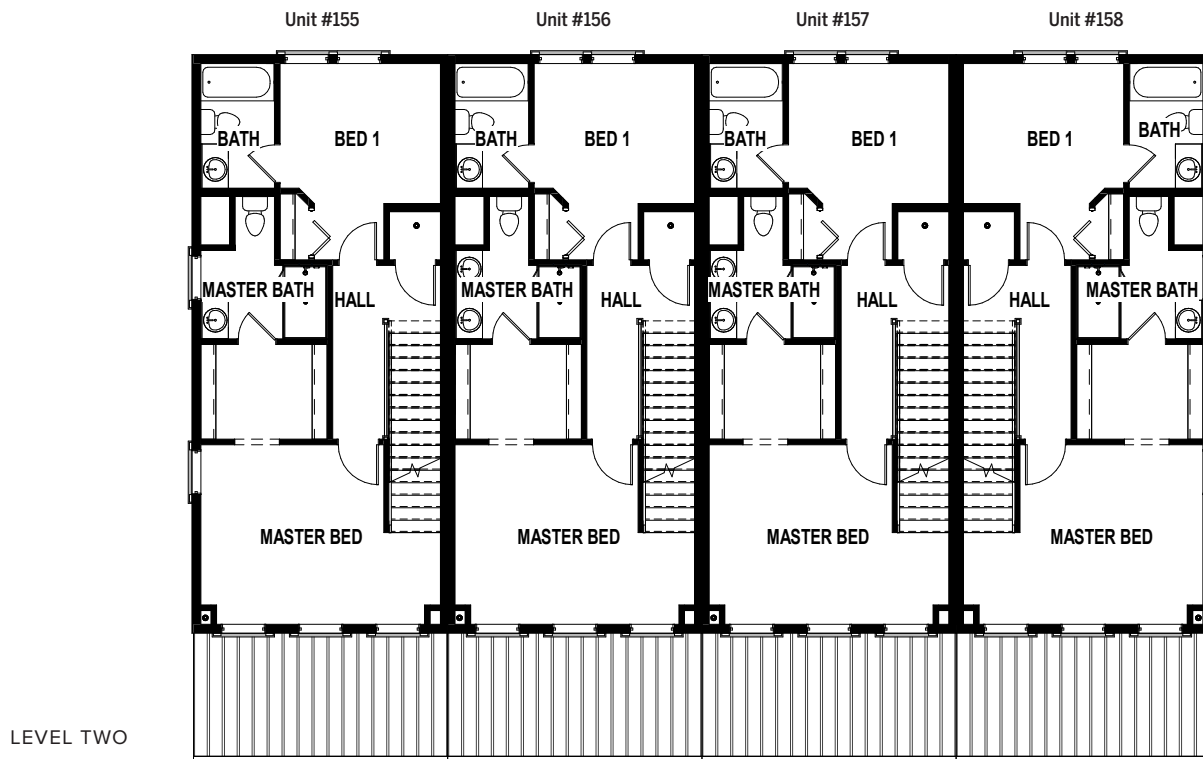
Unit #156
Plan: BALBOA
Color Package: LAGUNA

Unit #157
Plan: BALBOA
Color Package: COVE

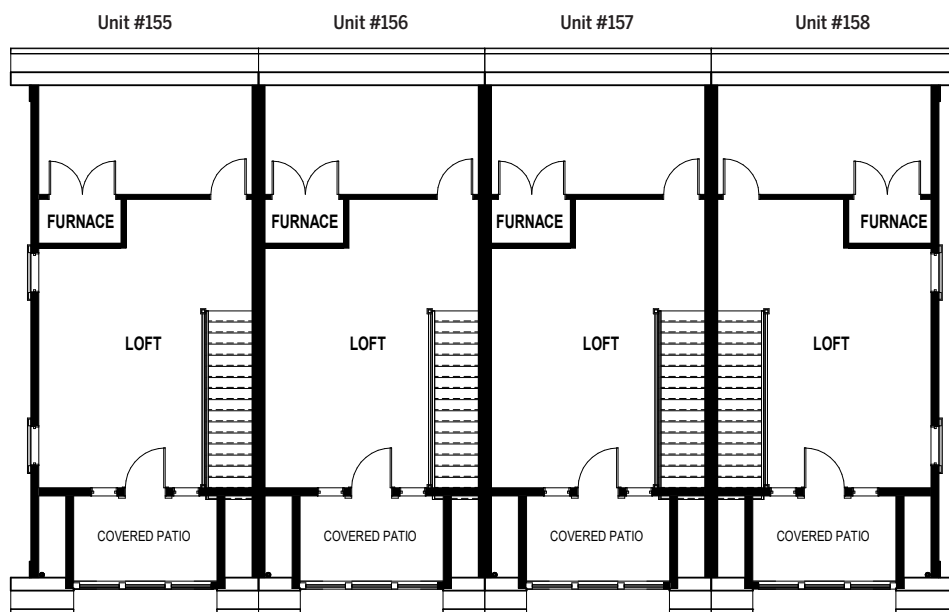
Unit #158
Plan: BALBOA
Color Package: VENICE



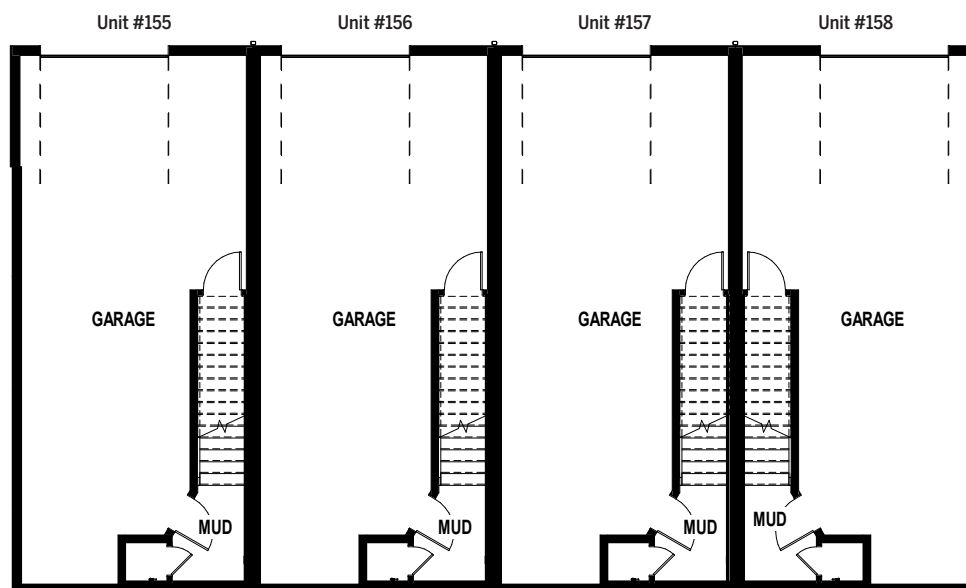
© Ivory Homes. The use of these plans and renderings is expressly limited to Ivory Homes. Re-use, reproduction, or publication by any method, in whole or in part, is prohibited. All renderings of exteriors and floor plans are artist's conceptions and may vary from the actual home as built. All square footages are approximate. *All information contained in this web site/catalog is deemed reliable but not guaranteed. All properties/materials are subject to prior sale, change, or withdrawal notice. Ivory Homes, Utah's Number One Homebuilder believes all information to be correct but assumes no legal responsibility for accuracy.



LEVEL TWO



LEVEL THREE



BASEMENT

BALBOA TOWNHOMES

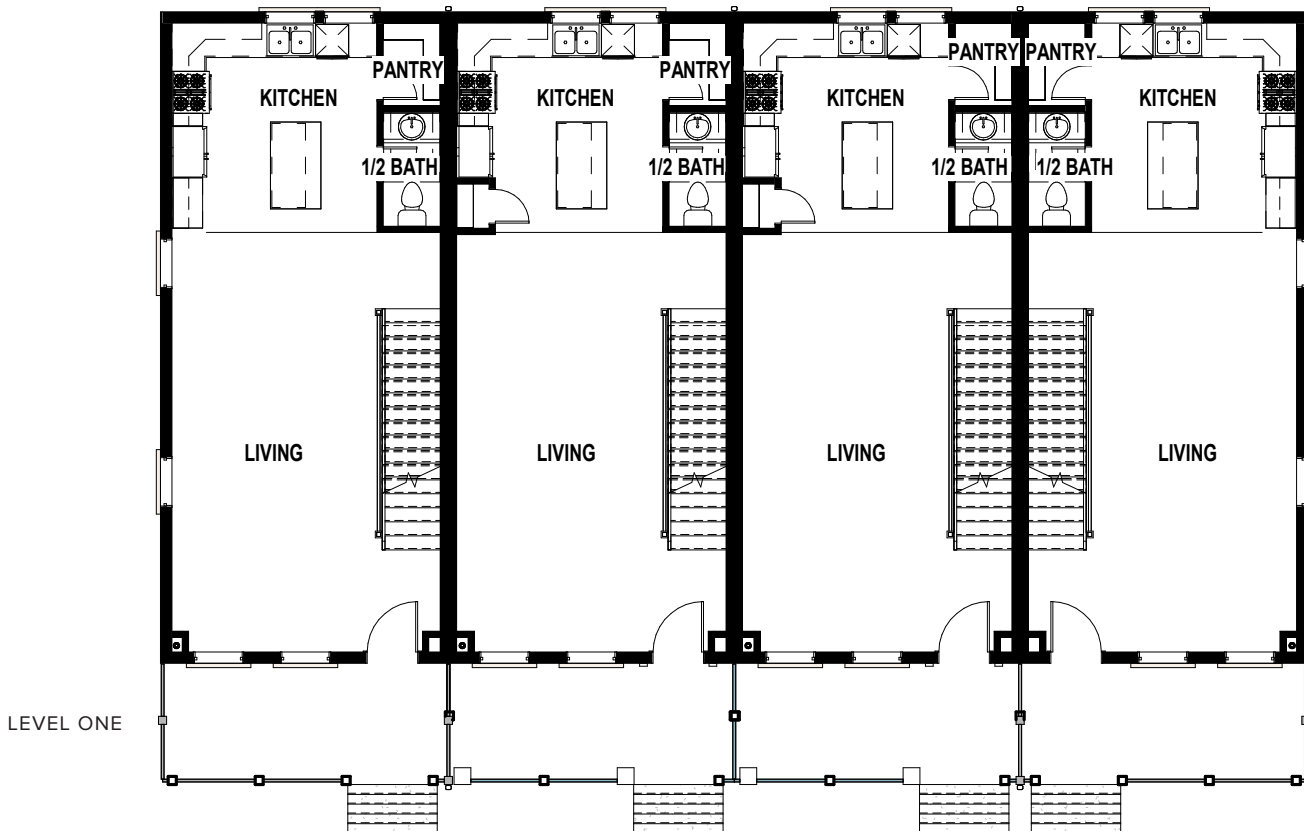


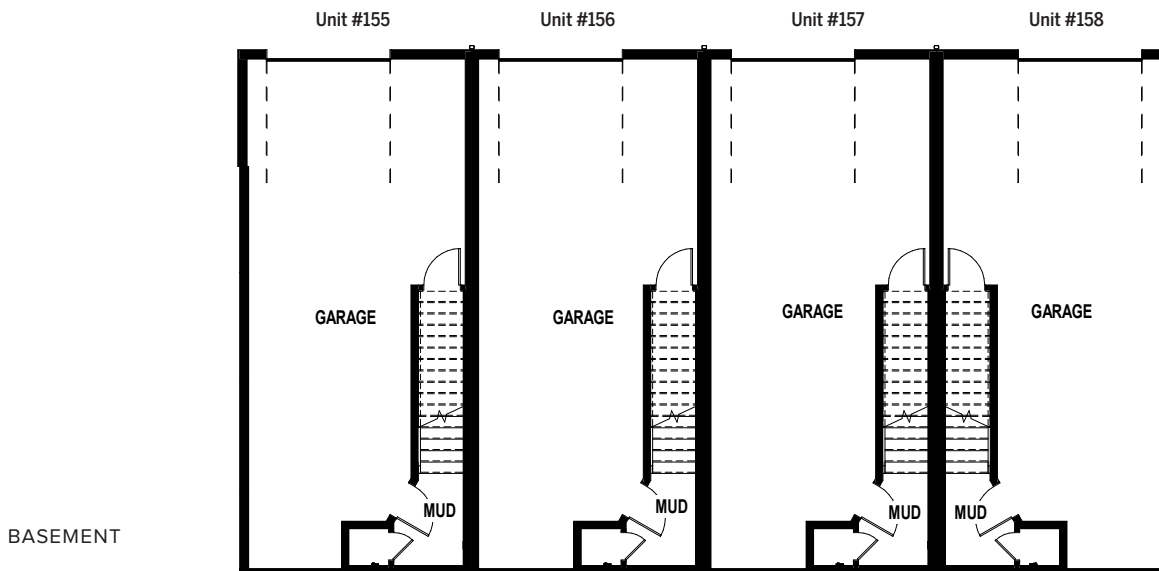
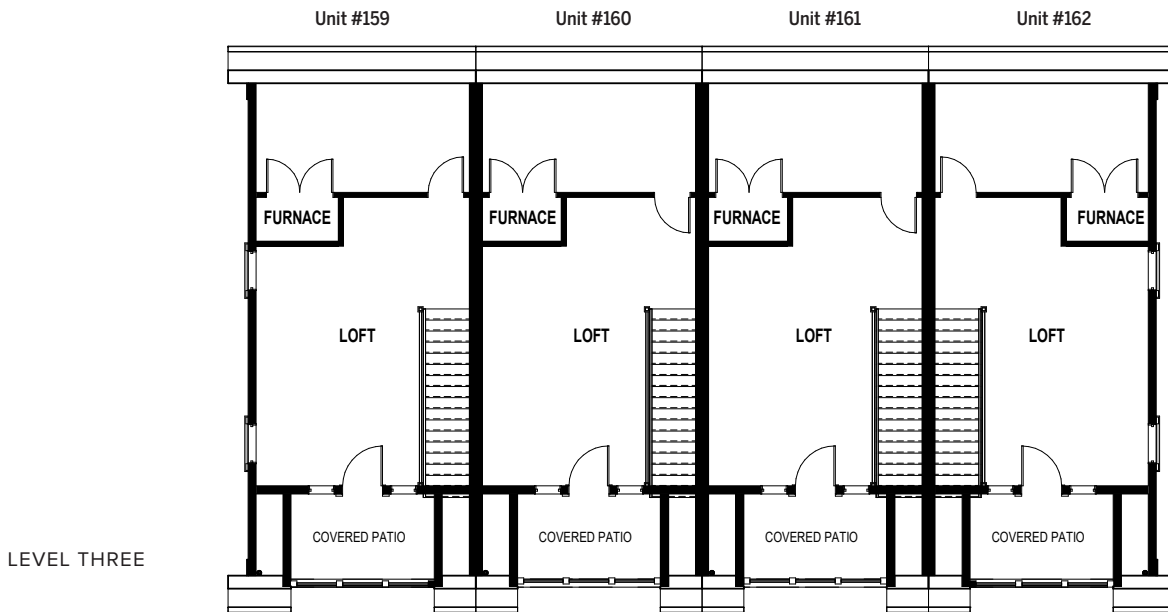
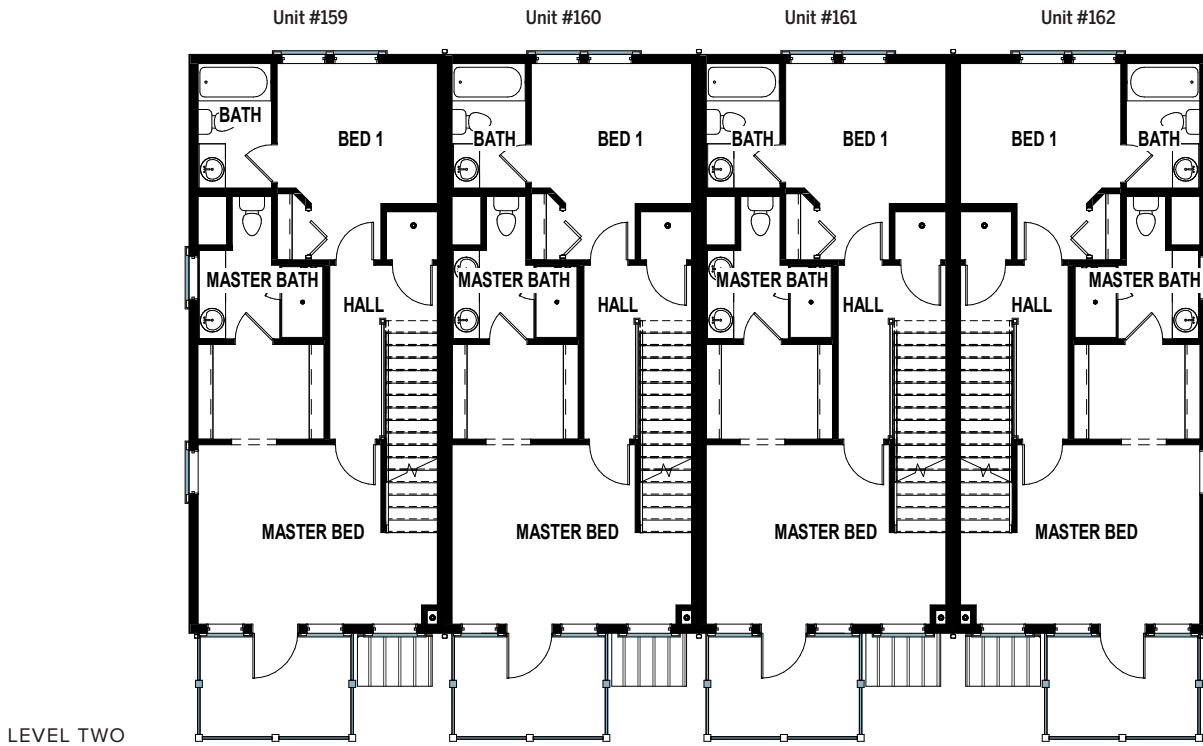
Unit #159
Plan: BALBOA
Color Package: LAGUNA

Unit #160
Plan: BALBOA
Color Package: COVE

Unit #161
Plan: BALBOA
Color Package: VENICE

Unit #162
Plan: BALBOA
Color Package: MALIBU





HUNTINGTON / SANTA MONICA TOWNHOMES



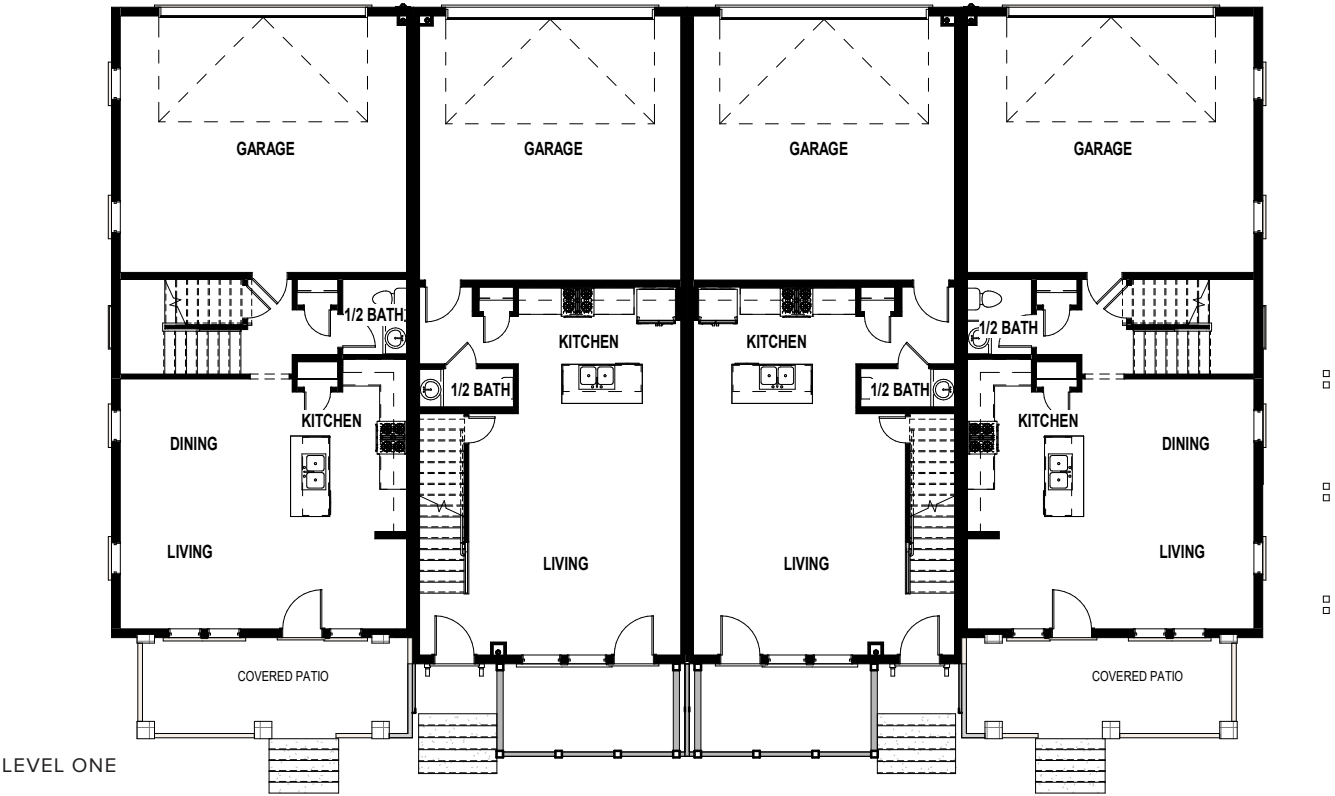
BUILDING 2G

Unit #163
Plan: SANTA MONICA
Color Package: LAGUNA

Unit #164
Plan: HUNTINGTON
Color Package: VENICE

Unit #165
Plan: HUNTINGTON
Color Package: COVE

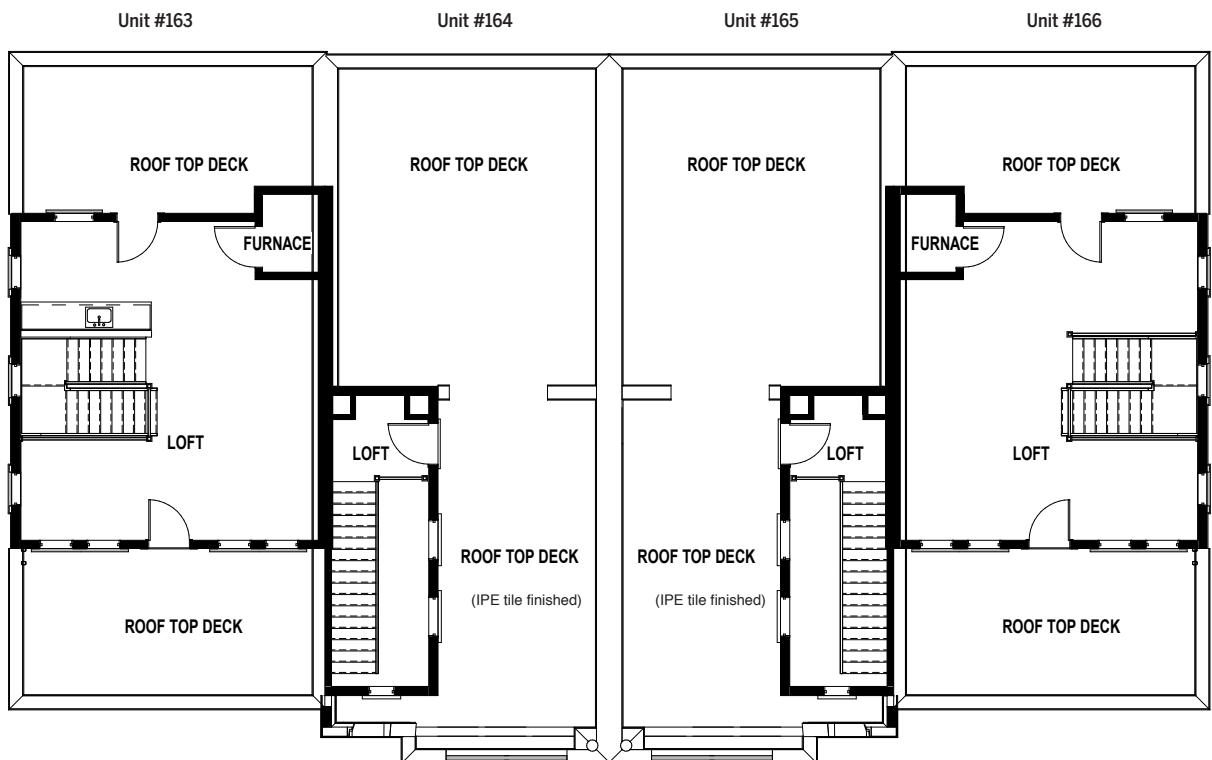
Unit #166
Plan: SANTA MONICA
Color Package: MALIBU



© Ivory Homes. The use of these plans and renderings is expressly limited to Ivory Homes. Re-use, reproduction, or publication by any method, in whole or in part, is prohibited. All renderings of exteriors and floor plans are artist's conceptions and may vary from the actual home as built. All square footages are approximate. *All information contained in this web site/catalog is deemed reliable but not guaranteed. All properties/materials are subject to prior sale, change, or withdrawal notice. Ivory Homes, Utah's Number One Homebuilder believes all information to be correct but assumes no legal responsibility for accuracy.



LEVEL TWO



LEVEL THREE

HUNTINGTON / SANTA MONICA TOWNHOMES



Unit #167

Plan: SANTA MONICA
Color Package: MALIBU

Unit #168

Plan: HUNTINGTON
Color Package: COVE

Unit #169

Plan: HUNTINGTON 2BR
Color Package: VENICE

Unit #170

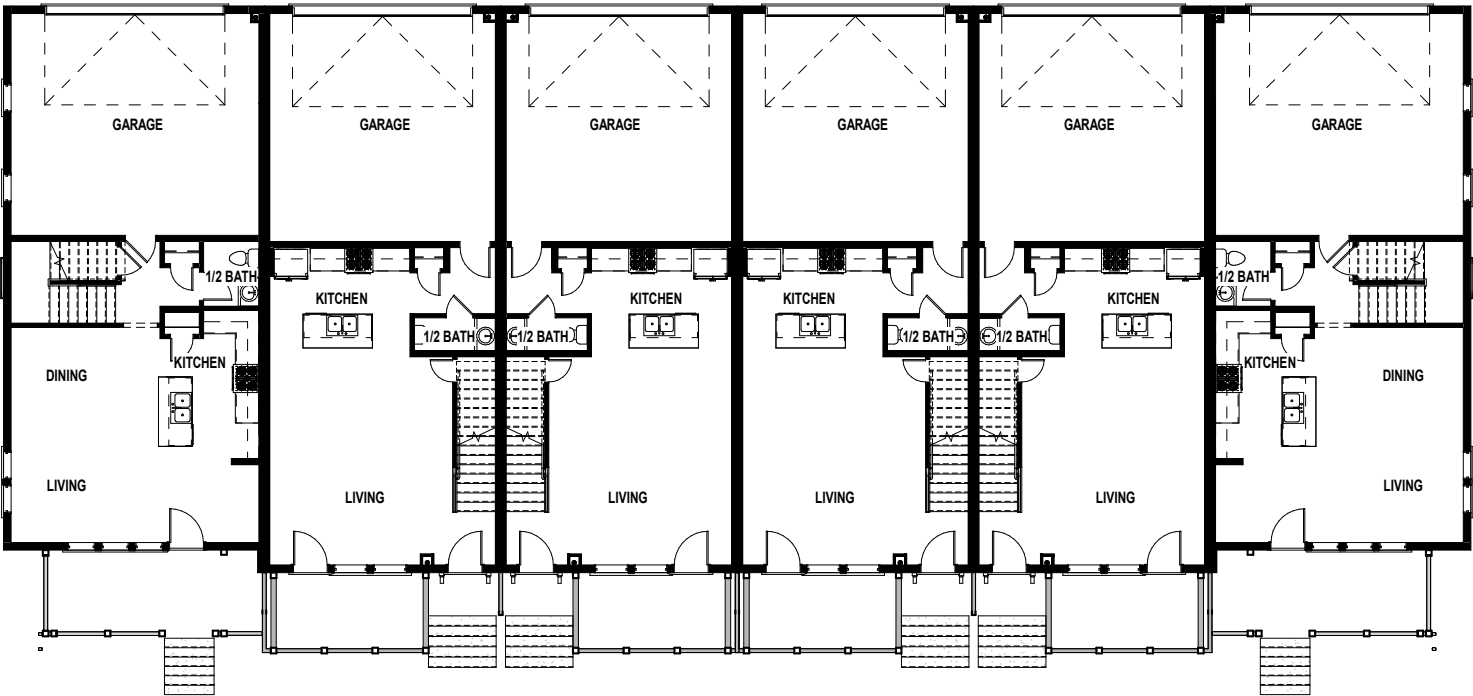
Plan: HUNTINGTON 2BR
Color Package: MALIBU

Unit #171

Plan: HUNTINGTON
Color Package: COVE

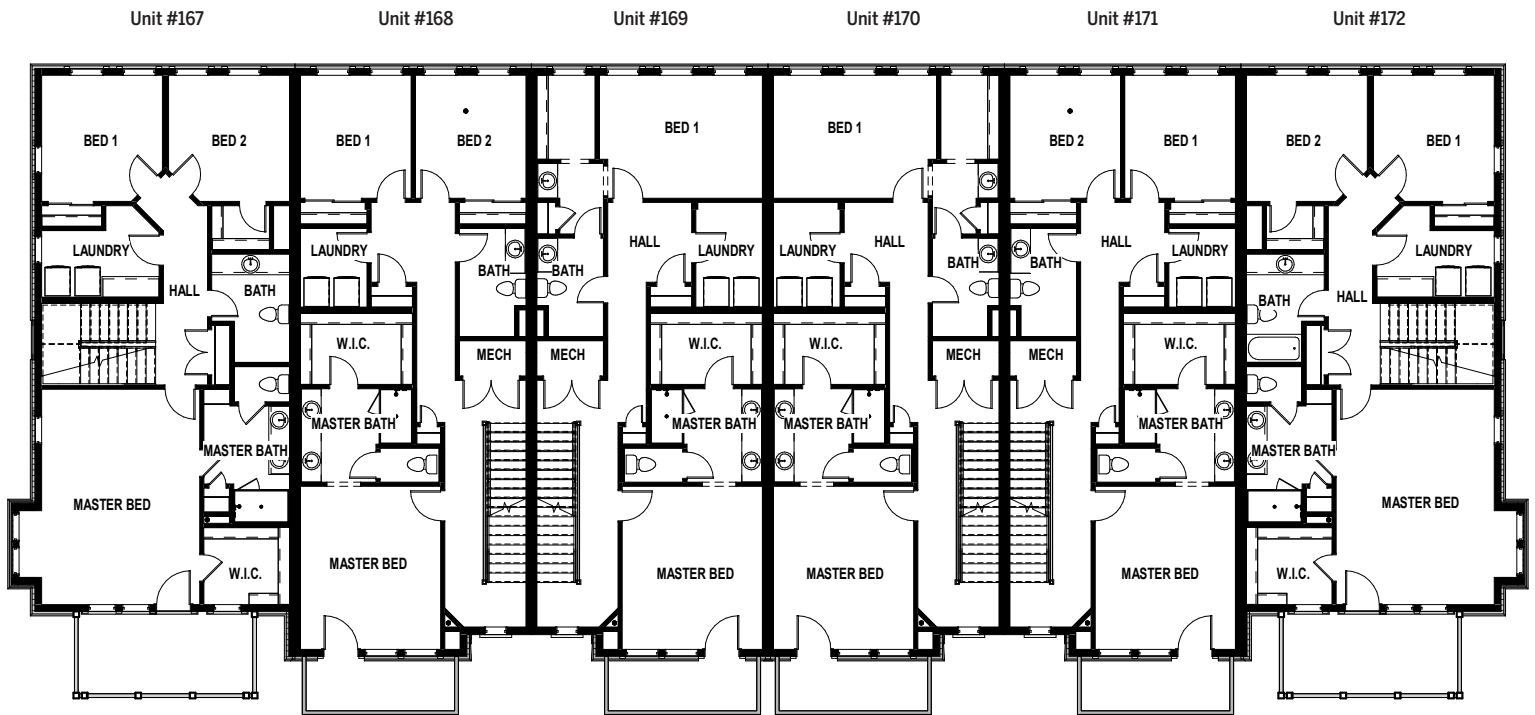
Unit #172

Plan: SANTA MONICA
Color Package: VENICE

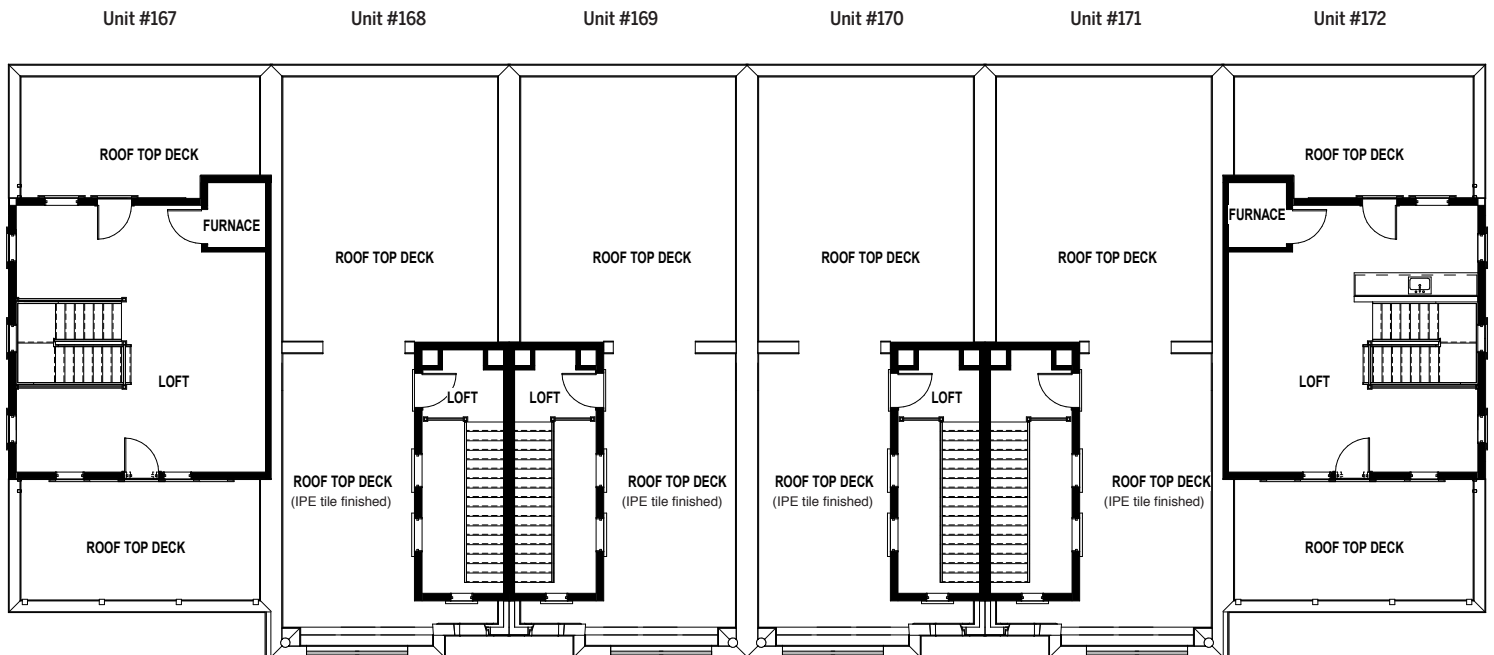


LEVEL ONE

© Ivory Homes. The use of these plans and renderings is expressly limited to Ivory Homes. Re-use, reproduction, or publication by any method, in whole or in part, is prohibited. All renderings of exteriors and floor plans are artist's conceptions and may vary from the actual home as built. All square footages are approximate. *All information contained in this web site/catalog is deemed reliable but not guaranteed. All properties/materials are subject to prior sale, change, or withdrawal notice. Ivory Homes, Utah's Number One Homebuilder believes all information to be correct but assumes no legal responsibility for accuracy.



LEVEL TWO



LEVEL THREE

HUNTINGTON / SANTA MONICA TOWNHOMES



Unit #173
Plan: SANTA MONICA
Color Package: MALIBU

Unit #174
Plan: HUNTINGTON
Color Package: VENICE

Unit #175
Plan: HUNTINGTON 2BR
Color Package: COVE

Unit #176
Plan: HUNTINGTON
Color Package: MALIBU

Unit #177
Plan: SANTA MONICA
Color Package: LAGUNA



© Ivory Homes. The use of these plans and renderings is expressly limited to Ivory Homes. Re-use, reproduction, or publication by any method, in whole or in part, is prohibited. All renderings of exteriors and floor plans are artist's conceptions and may vary from the actual home as built. All square footages are approximate. *All information contained in this web site/catalog is deemed reliable but not guaranteed. All properties/materials are subject to prior sale, change, or withdrawal notice. Ivory Homes, Utah's Number One Homebuilder believes all information to be correct but assumes no legal responsibility for accuracy.

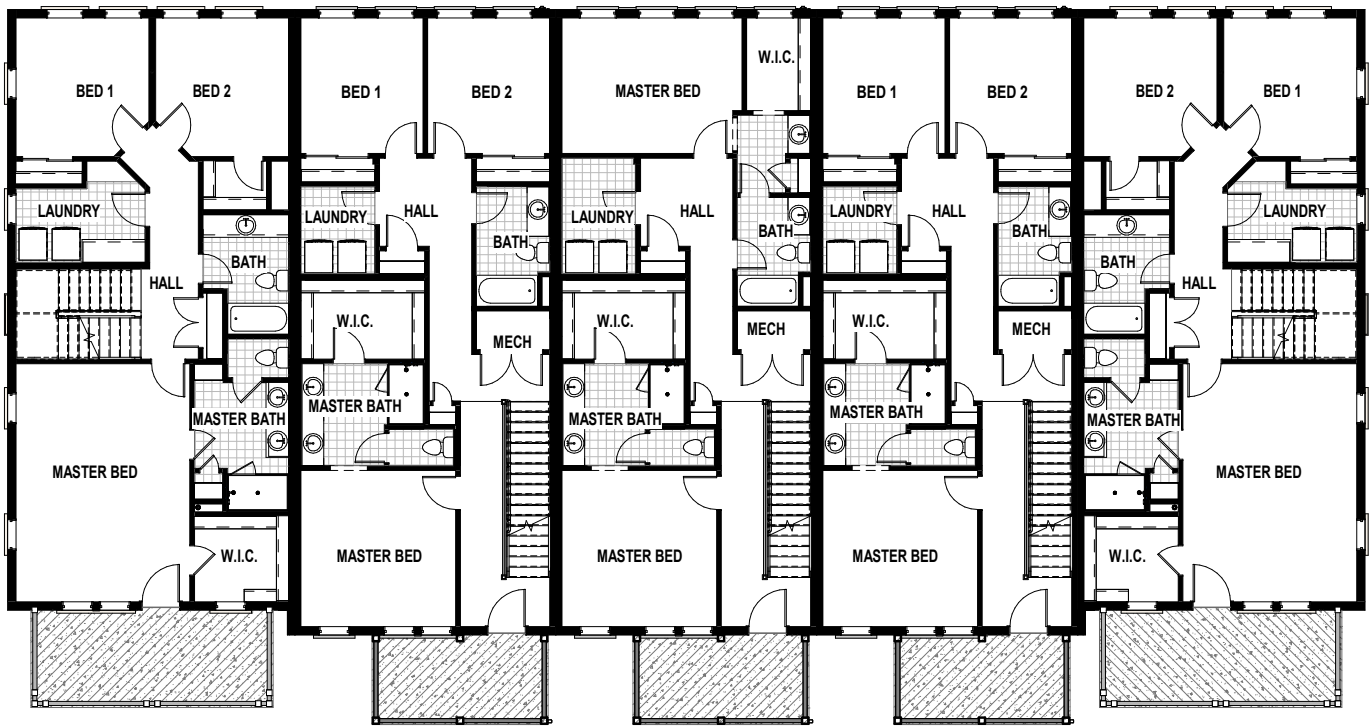
Unit #173

Unit #174

Unit #175

Unit #176

Unit #177



LEVEL TWO

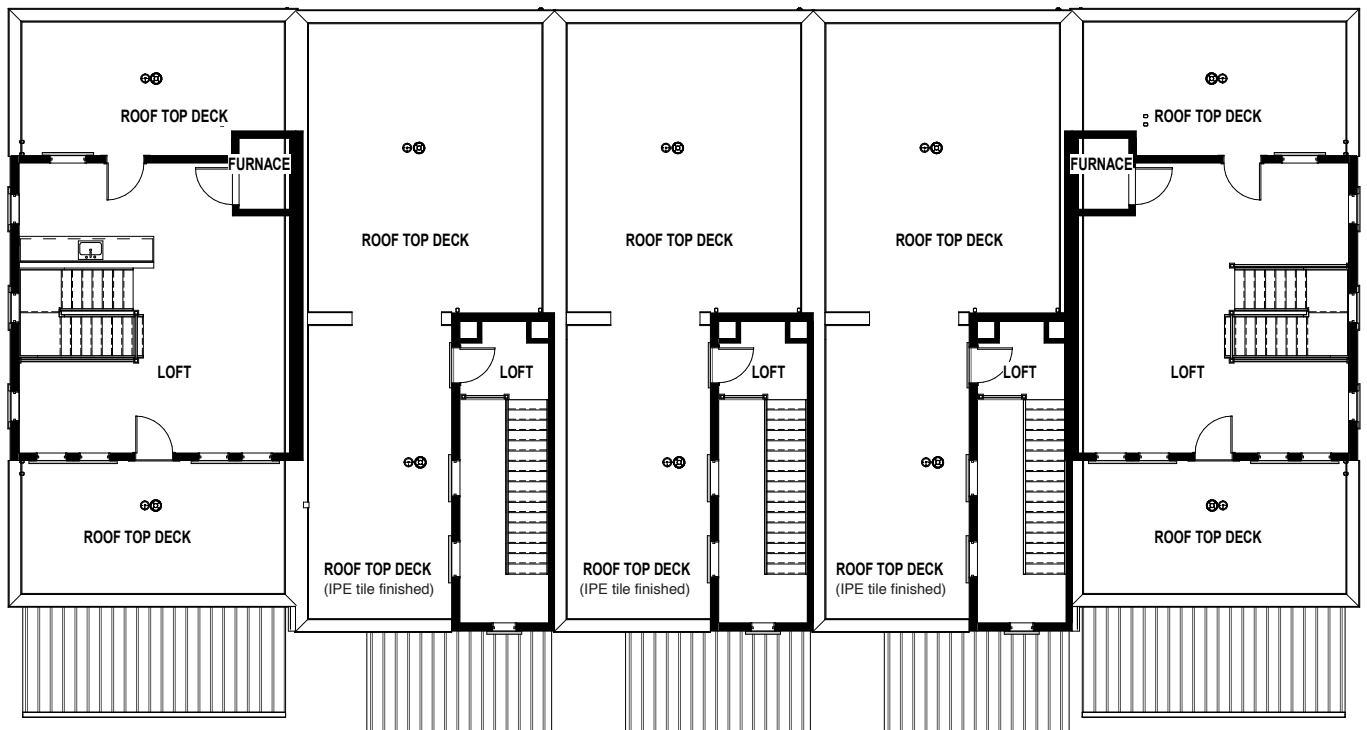
Unit #173

Unit #174

Unit #175

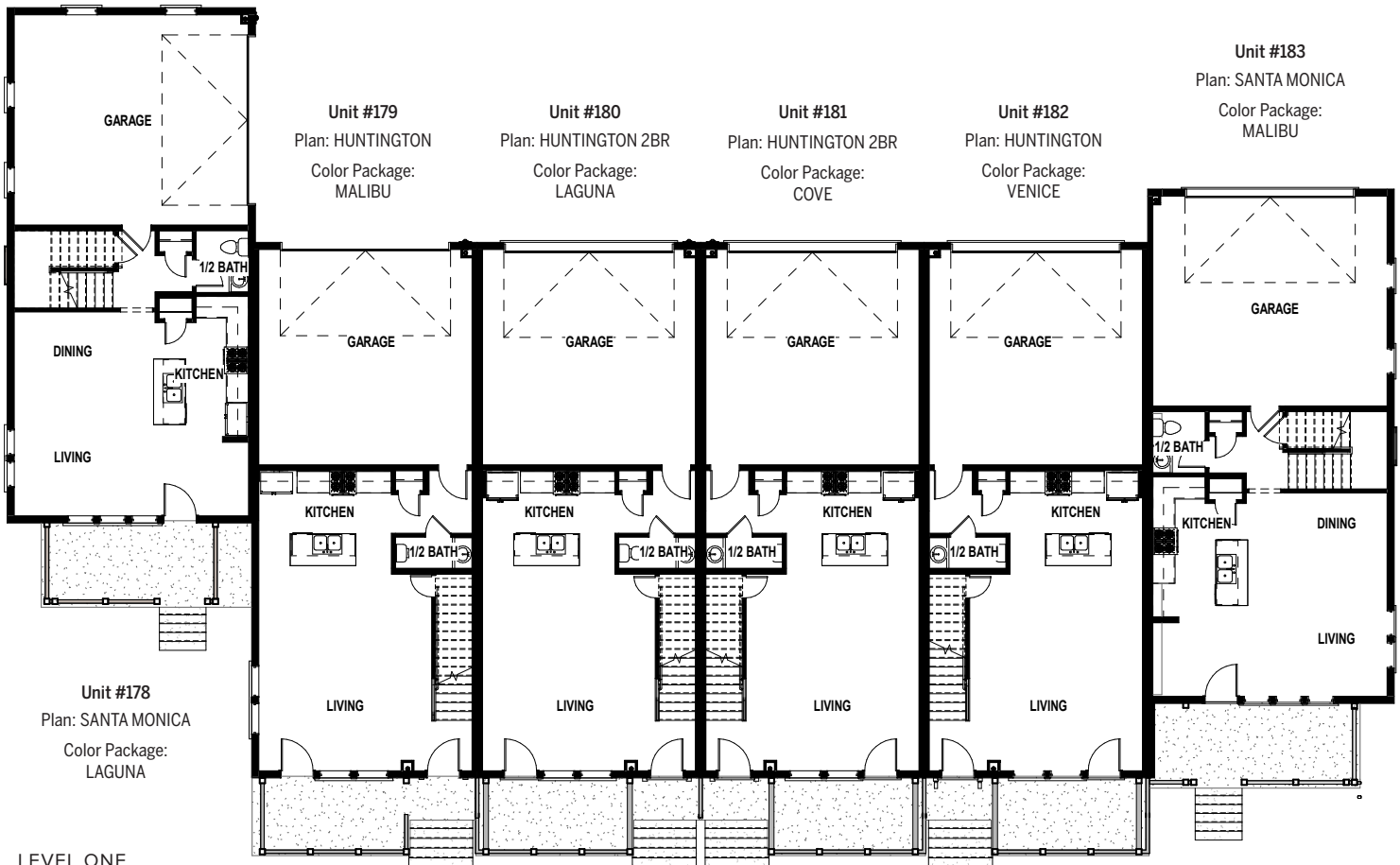
Unit #176

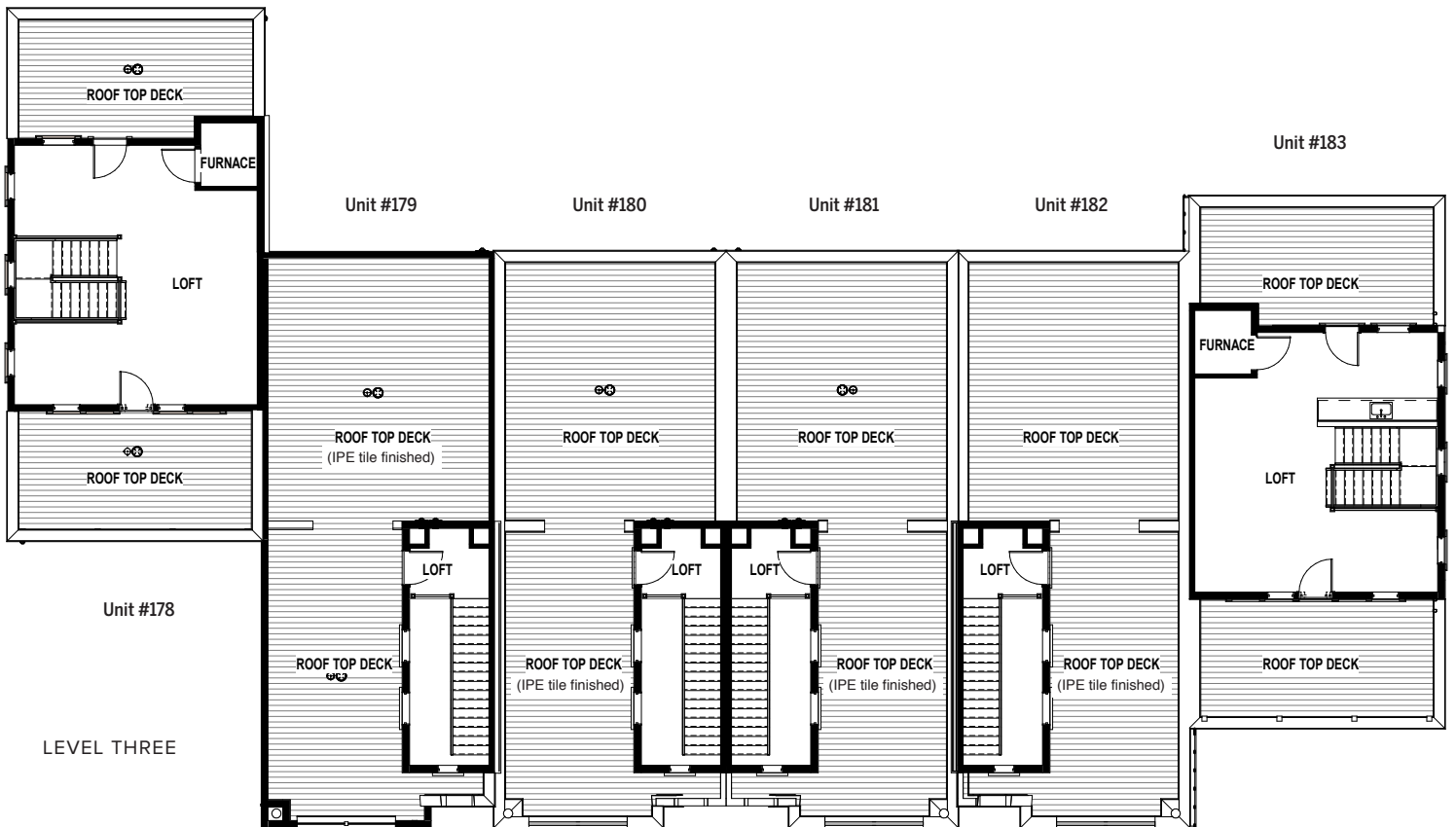
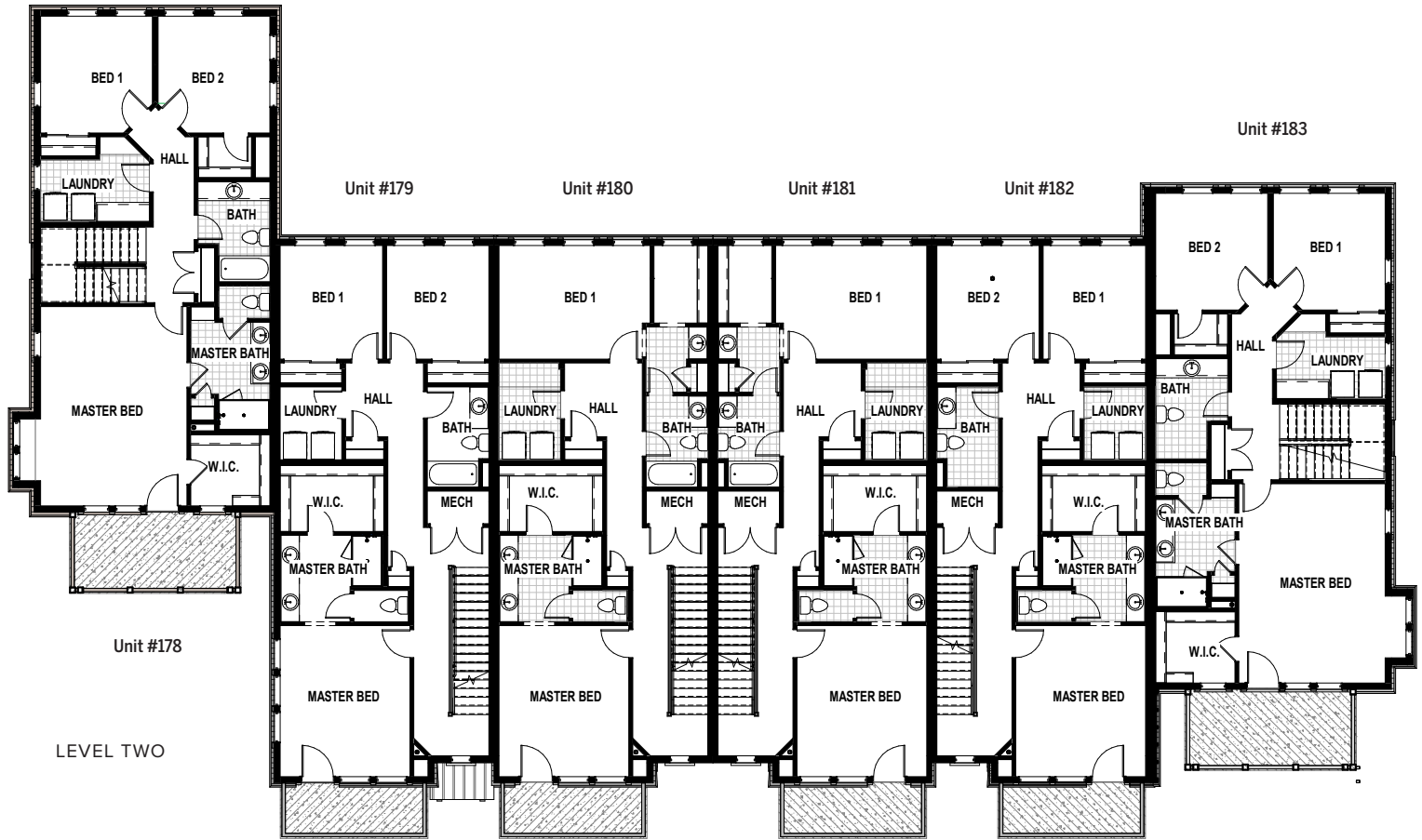
Unit #177



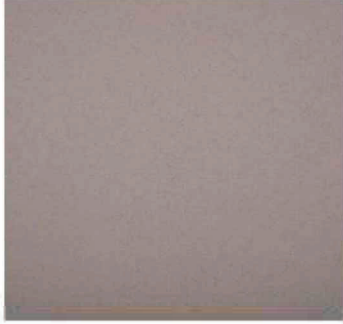
LEVEL THREE

HUNTINGTON / SANTA MONICA TOWNHOMES

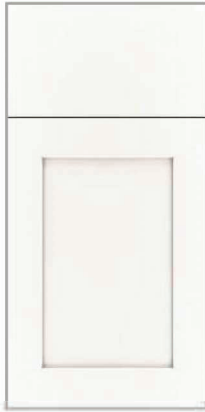




HOME DECOR PACKAGES



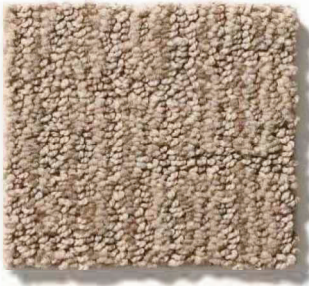
1.



2.



3.



4.



5.



6.

Laminate Flooring

COVE

1. **Countertop:** Quartz, Crest, 2CM
2. **Cabinets:** Small Tuscany, White Dove
3. **Tile Flooring - Bath/Laundry:** Emser Sterlina, Ivory Polished
4. **Carpet:** Anderson Tuftex, Plains
5. **Laminate Flooring:** Mannington Restoration, Anthology Parchment
6. **Wall/Trim/Door Paint Color:** Snowbound SW7004
7. **Kitchen Faucet:** Moen, Matte Black
8. **Bathroom Faucets:** Moen, Matte Black
9. **Hardware:** Matte Black Finish



7.



8.



9.

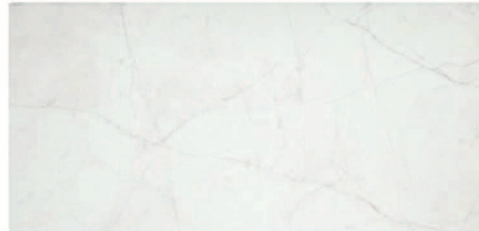




1.



2.



3.



4.



5.



6.

VENICE

1. **Countertop:** Granite, Silver Falls, 2CM
2. **Cabinets:** Small Tuscany, Dorian Gray
3. **Tile Flooring - Bath/Laundry:** Emser Sterlina, White Polished
4. **Carpet:** Anderson Tuftex, Plains
5. **Laminate Flooring:** Mannington Restoration, French Oak
6. **Wall/Trim/Door Paint Color:** Snowbound SW7004
7. **Kitchen Faucet:** Moen, Matte Black
8. **Bathroom Faucets:** Moen, Matte Black
9. **Hardware:** Matte Black Finish



7.

8.

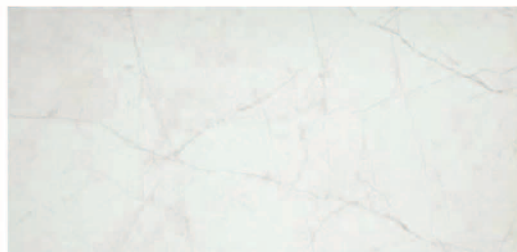
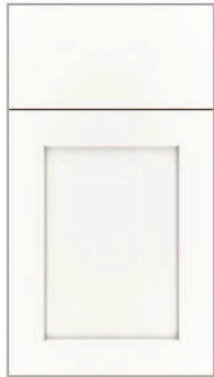


9.

HOME DECOR PACKAGES



1.



2.



3.



4.



5.



6.

LAGUNA

1. **Cabinets:** Small Tuscany, Crystal Stain-Alser/White Dove
2. **Tile Flooring - Bath/Laundry:** Emser Sterlina, White Polished
3. **Countertop:** Quartz, Bianco Tiza, 2CM
4. **Carpet:** Anderson Tuftex, Stonish
5. **Laminate Flooring:** Mannington Restoration, Stone
6. **Wall/Trim/Door Paint Color:** Snowbound SW7004
7. **Kitchen Faucet:** Moen, Brushed Nickel
8. **Bathroom Faucets:** Moen, Brushed Nickel
9. **Hardware:** Brushed Nickel/Matte Black Finish

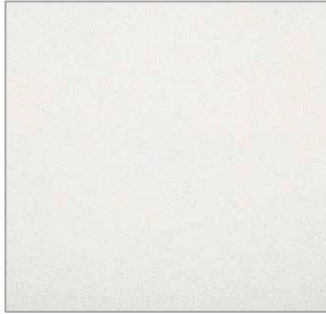


7.

8.



9.



1.



2.



3.



4.



5.



6.

MALIBU

1. **Countertop:** Quartz, Linen, 2CM
2. **Cabinets:** Concept Kitchens, BM Hale Navy
3. **Tile Flooring - Bath/Laundry:** Emser Sterlina, Henna Polished
4. **Carpet:** Anderson Tuftex; Stonish
5. **Laminate Flooring:** Mannington Restoration, Armor
6. **Wall/Trim/Door Paint Color:** Snowbound SW7004
7. **Kitchen Faucet:** Moen, Brushed Nickel
8. **Bathroom Faucets:** Moen, Brushed Nickel
9. **Hardware:** Brushed Nickel/Matte Black Finish



7.

8.



9.

MARINA VILLAGE

AT DAYBREAK

Kestrel Rise Road and 114th South, Daybreak

385-315-3710 | ivoryhomes.com

LEARN MORE:

